



รายงานวิจัยฉบับสมบูรณ์

โครงการความหลากหลาย ความหนาแน่น และการแพร่กระจายของ
สาหร่ายทะเลที่เปลี่ยนแปลงตามสภาพภูมิศาสตร์ และฤดูกาล
ในจังหวัดสงขลา

โดย

ผศ.ดร.อัญชนา ประเทพ

14 กรกฎาคม 2547

สัญญาเลขที่ TRG4580041

รายงานวิจัยฉบับสมบูรณ์

โครงการความหลากหลาย ความหนาแน่น และการแพร่กระจายของ
สาหร่ายทะเลที่เปลี่ยนแปลงตามสภาพภูมิศาสตร์ และฤดูกาล
ในจังหวัดสงขลา

ผศ.ดร.อัญชณา ประเทพ
หน่วยวิจัยสาหร่ายและหญ้าทะเล
ศูนย์ความหลากหลายทางชีวภาพแห่งคาบสมุทรไทย
ภาควิชาชีววิทยา คณะวิทยาศาสตร์
มหาวิทยาลัยสงขลานครินทร์
หาดใหญ่ สงขลา

สนับสนุนโดยสำนักกองทุนสนับสนุนการวิจัย
(ความเห็นในรายงานฉบับนี้เป็นของผู้วิจัย สกว. ไม่จำเป็นต้องเห็นด้วยเสมอไป)

กิตติกรรมประกาศ

ผู้วิจัยขอกราบขอบพระคุณอาจารย์ที่ปรึกษาโครงการ ศ.ดร. กาญจนภาณุ ลีวัฒน์โนมนต์ ผู้บุกเบิกงานวิจัยสาหร่ายทะเลในประเทศไทย ผู้ให้ความรู้ ข้อเสนอแนะ และคำปรึกษาแก่ผู้วิจัยทั้งใน ด้านงานวิจัยสาหร่ายทะเลและการเรียนการสอน รวมไปถึงความกรุณาในส่วนอื่น ๆ ดร.สรวิศ เผ่าทอง ศุข ให้กำลังใจและเป็นแรงผลักดันในการทำงานวิจัย รวมไปถึงสมาชิกชมรมสาหร่ายและแพลงก์ตอน แห่งประเทศไทยทุกท่าน

ขอขอบคุณสมาชิกหน่วยวิจัยสาหร่ายและหญ้าทะเลทุกคน ที่ช่วยกันสร้างและทำงานวิจัยด้วย ดีเสมอมา มีทั้งเสียงหัวเราะ และร้องไห้ สมหวังและผิดหวังปะปนกันไป

ขอขอบคุณภาควิชาชีววิทยา คณะวิทยาศาสตร์ มหาวิทยาลัยสงขลานครินทร์ คอยสนับสนุน ในการทำงานวิจัย โดยเฉพาะอย่างยิ่ง รศ.ดร.จุฑามาส ศตสุข และ รศ.ดร.สุนทร โสติพิพันธ์ ผู้คอย ให้คำแนะนำในชีวิตการทำงานที่ดีมาโดยตลอด

ขอขอบคุณ สำนักงานกองทุนสนับสนุนการวิจัย (สกว) สำหรับทุนส่งเสริมนักวิจัยรุ่นใหม่ ประจำปี 2545 TRG4580041 สำหรับการวิจัยในครั้งนี้ ซึ่งเป็นฐานที่สำคัญในการสร้างและพัฒนางาน วิจัย การเรียนการสอน และเกิดเป็นหน่วยวิจัยสาหร่ายและหญ้าทะเลขึ้นมาได้

อัญชนา ประเทพ

บทคัดย่อ

รหัสโครงการ: TRG4580041

ชื่อโครงการ: โครงการความหลากหลาย ความหนาแน่น และการแพร่กระจายของสาหร่ายทะเลที่เปลี่ยนแปลงตามสภาพภูมิศาสตร์ และฤดูกาล ในจังหวัดสงขลา

ชื่อนักวิจัย: ผศ.ดร.อัญชนา ประเทพ หน่วยวิจัยสาหร่ายและหญ้าทะเล

ศูนย์ความหลากหลายทางชีวภาพแห่งคาบสมุทรไทย

ภาควิชาชีววิทยา คณะวิทยาศาสตร์

มหาวิทยาลัยสงขลานครินทร์

E-mail address: anchana.p@psu.ac.th, a_prathep@hotmail.com

ระยะเวลาโครงการ: 2 ปี

สาหร่ายทะเลขนาดใหญ่มีความสำคัญทั้งทางนิเวศวิทยาและเศรษฐกิจ เป็นองค์ประกอบที่สำคัญของระบบนิเวศทางทะเลทั่วโลก สาหร่ายทะเลถูกจัดเป็นผู้ผลิตเบื้องต้น เป็นแหล่งหลบภัย และเป็นที่อยู่อาศัยสำหรับสัตว์น้ำวัยอ่อน และเป็นอาหารให้กับสัตว์น้ำนานาชนิด วัตถุประสงค์ของงานวิจัยคือเพื่อ 1) ศึกษาความหลากหลายทางชีวภาพ ความหนาแน่นและการแพร่กระจายของสาหร่ายทะเลในบริเวณจังหวัดสงขลา และ 2) เพื่อศึกษาความผันแปรของสาหร่ายชนิดเด่นคือ *Gelidium pusillum*, *Porphyra vietnamensis* และ *Caulerpa racemosa* ต่อฤดูกาลและสถานที่ รวมถึงการศึกษานิเวศประชากรของสาหร่ายดังกล่าว ทำการศึกษาด้วยวิธีพื้นฐานเช่น การวาง line transect และการสุ่มเก็บ และประเมินตัวอย่างด้วย quadrat ในหลายพื้นที่ การศึกษาเรื่องนิเวศประชากรของสาหร่าย *P. vietnamensis* มีการติดตามศึกษาประชากรสาหร่ายทะเลนานมากกว่า 2 ปี เพื่อให้ทราบถึงการรูปแบบการเปลี่ยนแปลงของประชากรตามฤดูกาลที่ต่าง ๆ กัน ในขณะที่การศึกษาสาหร่าย *G. pusillum* มีการติดตามผลการเปลี่ยนแปลงของประชากรและการสร้างส่วนสืบพันธุ์อย่างใกล้ชิดทุก ๆ เดือน ผลของแรงกระทำของคลื่นลม สารอาหารและปัจจัยทางเคมีกายภาพ ได้ถูกศึกษาเพื่อหาความสัมพันธ์และผลกระทบต่อการประชากรสาหร่ายทะเล ผลการศึกษาพบว่ามีความผันแปรทางชีววิทยาของสาหร่ายทะเลเช่น พื้นที่ปกคลุม ความยาว น้ำหนัก และอวัยวะสร้างเซลล์สืบพันธุ์ของสาหร่ายทั้ง 3 ชนิด และพบว่าแรงกระทำจากคลื่นมีผลกระทบต่อการสาหร่ายทะเล ซึ่งเป็นปัจจัยที่สำคัญในการกำหนดประชากร และการแพร่กระจายของสาหร่ายทะเล การศึกษาต่อไปควรมุ่งเน้นไปที่สาหร่ายวัน *Gracilaria fisherii* ซึ่งมีคุณค่าทางเศรษฐกิจและเคยพบหนาแน่นในทะเลสาบสงขลา แต่ปัจจุบันพื้นที่ได้ถูกรบกวนอย่างมากทำให้ประชากรของสาหร่ายวันลดลงอย่างมาก

คำหลัก: ความหลากหลายทางชีวภาพ, นิเวศวิทยา, สาหร่ายทะเลขนาดใหญ่, สงขลา, ประเทศไทย

Abstract

Project Code: TRG4580041

Project Title: Spatial and temporal variations in diversity, abundance and distribution of macroalgae in Songkla province, Thailand

Investigator: Assistance Professor Dr. Anchana Prathep, Seaweed and Seagrass Research Unit, Centre of Excellence in Biodiversity of Peninsular Thailand, Department of Biology, Faculty of Science, Prince of Songkla University

E-mail address: anchana.p@psu.ac.th, a_prathep@hotmail.com

Project period: 2 years

Seaweeds are an ecologically and economically important component of marine ecosystem worldwide: primary producer, shelter, nursery ground and food sources for many marine organisms. The main focus of this project is 1) to investigate diversity, abundance and distribution of macroalgae in Songkhla Province and 2) to investigate spatial and temporal variations and examine population of dominance species: *Gelidium pusillum*, *Porphyra vietnamensis* and *Caulerpa racemosa*. Basic field studies such as line transect and quadrat samplings were employed to monitor the population dynamics of seaweeds and various sites. This research was carried out over 2 years in some seaweed population to replicate the seasonal patterns such as *Porphyra vietnamensis*; while *Gelidium pusillum* was monitored monthly to closely investigate the population and reproductive cycles of the alga. The effects of wave action, nutrients and other chemical-physical parameters were also investigated to examine their effects on the algae population. There were variations of biological characters such as percentage cover, length, weight, reproductive organs of these 3 algae throughout the study; they also were affected greatly by wave motion which is known to be an important parameter to determine population and distribution of macroalgae. Further investigation on *Gracilaria fisherii*, another economically important and dominant alga in Songkhla would be very useful, since Songkhla lake is now badly disturbed and the *Gracilaria fisherii* population has been greatly declined.

Keywords: Biodiversity, Ecology, Macroalgae, Songkhla, Thailand

Content

	Page
Acknowledgment	3
Abstract (Thai)	4
Abstract (English)	5
Introduction	7
Objective	7
Material and Method	8
Result	13
Discussion	26
Reference	32
output	42
Appendix	44

Introduction

Seaweeds are an ecologically and economically important component of marine ecosystem worldwide: primary producer, shelter, nursery ground and food sources for many marine organisms. They are used around the world as human foods, fertilizers, and the extraction of valuable products such as industrial gums and chemicals (agars, carageenans and alginates. Recent research has pointed to new opportunities, particularly in the field of medicine, associated with bioactive properties of molecules extracted from seaweeds (e.g. Ali et al., 2002). Indeed, they are an interesting organism for study and research.

Marine organisms including seaweeds have greatest diversity in the tropics, particularly in South-East Asia and the South Pacific, the Indian Ocean and the Caribbean Sea (Norse, 1993). A hundred and twenty species of common seaweeds were reported in Thailand (Lewmanomont and Ogawa, 1995), however more are expected and to be discovered. Recent study has showed that 10 new species of macroalgae are new to Thai water, only at Phuket province alone (Thongroy et al., 2007). Seaweed study in Thailand was rather decline (Powthongsook, 2000), until recently Seaweed and Seagrass Research Unit, Centre for Biodiversity of Peninsular Thailand has put together a few research and publications on seaweed biodiversity and ecology in Thailand (Prathep 2003; Prathep, 2005; Mayakun and Prathep, 2005; Prathep et al., 2006; Prathep and Tantiprapas, 2006; Prathep et al., 2007; Thongroy et al., 2007; Prathep et al., 2008). However, there are still a lot of research questions to be answered both in biology, ecology and cultivation.

Because of seaweeds' habitat and biology, seaweed can be used as a *model* organism to study various ecological theories both in the intertidal and subtidal habitats e.g. competition (space, light and nutrients), herbivore defensive mechanisms and prey-predation.(e.g. Creed et al., 1998; Prathep, 2002.; Prathep et al., 2003)

The main focus of this project is 1) to study diversity, abundance and distribution of macroalgae in Songkhla Province, Thailand, 2) to investigate spatial and temporal variations in population of dominance species: *Gelidium pusillum*, *Porphyra vietnamensis* and *Caulerpa racemosa* and 3) to examine population ecology using *G. pusillum*, *P. vietnamensis* and *C. racemosa* as model organisms.

Materials and Methods

1) Seaweed Diversity study

Site survey was done during August 2002, a long tail boat was used to survey and access all the possible seaweed habitats in Songkhla province, Thailand (Figure 1).

Observation on abundance and distribution of macroalgae has been done; skin and scuba diving techniques were used to collect and observe all the macroalgae found in the sites.

There were 2 sites chosen to study in detail due to seaweeds abundance and richness:

- 1) Saun Song Tha-le (Intertidal habitat, with *G. pusillum* and *P. vietnamensis* abundance) and
- 2) Ko Kham (Subtidal habitat, with *C. racemosa* abundance).

To study spatial and temporal variations of population of *G. pusillum*, *P. vietnamensis* and *C. racemosa*, various biological characters such as percentage cover, frond density, length, width and biomass of these seaweeds were monitored in the field at various sampling sites. Line transects and quadrats samplings were employed to study population and distribution of *G. pusillum*, *P. vietnamensis* during low tide. Scuba divers and quadrats samplings were employed to collect and measure samples on the study of *C. racemosa* population.

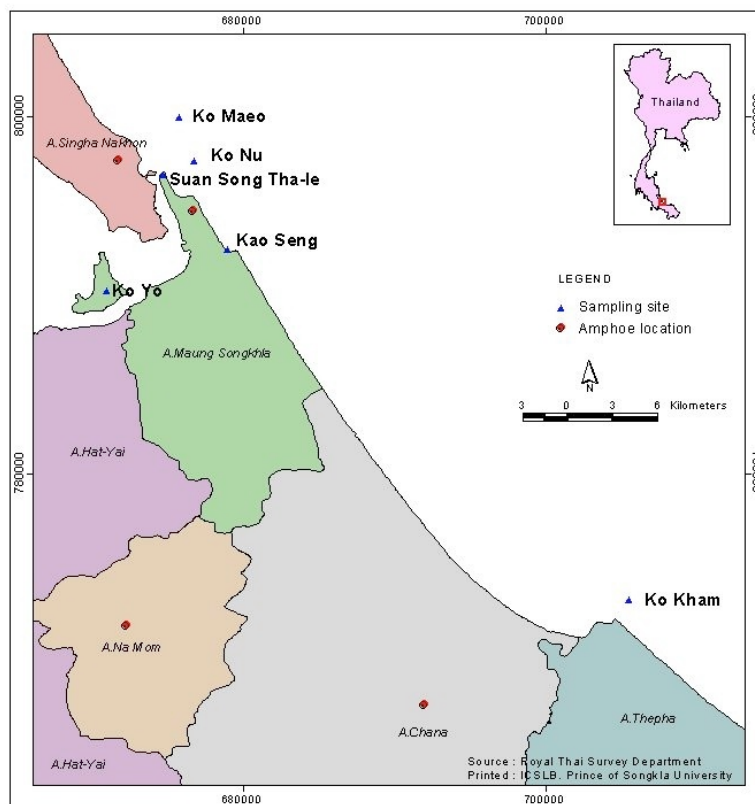


Figure 1 Field collection and study sites in Songkhla province

2) *Gelidium pusillum* population study

Preliminary observations revealed that *G. pusillum* is a dominant red alga on many intertidal shores in Southern Thailand. In Songkhla province, at Suan Song Tha Le (7°13'N, 100°34'W), a high abundance of *G. pusillum* was found over a 1 km long artificial rocky wall. Plants are directly exposed to the wave motion which is especially high during the monsoon season (October-March). Sheltered area plants do not directly face the ocean and therefore are less exposed to waves.

Each month between July 2003 and June 2004, three hundred plants were sampled from ten 50 cm X 50 cm quadrats on both the sheltered and exposed areas of the rocky wall. Fifteen plants from each quadrat were measured for length and examined for reproductive status. Razor blade cross sections were stained using 1% aniline blue and examined for spermatangia, cystocarps and tetrasporic sori (Fredriksen et al., 1994).

Temperature and rainfall were monitored to test for whether there was any correlation with percentage cover, length of thalli, percentage of reproductive fronds and number of different reproductive phases. Nutrients were not considered for this study because the site is on the open mouth of the Songkhla Lake basin. High concentrations of nutrients from urban runoff as well as from agriculture and aquaculture around the basin (Panapitukkul et al., 2005; Chevakidagarn, 2006) are well-known.

Two way ANOVA was employed to test the differences in percentage cover, length of thalli, life phase and numbers of each reproductive phase among sites and seasons using STATISTICA, version 5.0. When necessary, data were transformed to meet the assumptions of the parametric test. Multiple comparisons were made following Zar (1984) when there were significant differences between treatments. Statistical results are presented based on the transformed analyses, but for clarity, graphical output was based on the untransformed means. Spearman Rank correlation was employed to assess the relationship between temperature and rainfall on percentage cover, length, percentage of reproductive fronds, life phase and number of each reproductive phase

3) *Porphyra vietnamensis* population study

P. vietnamensis grows on rocks in the upper littoral zone exposed to strong wave action. It seems to grow best fully exposed, moistened by the spray of the waves. The gametophyte blade of *P. vietnamensis*, appears in the months of November to February during the monsoon season. During this period water temperature decreases from 27-30°C to 24-27°C, salinity from 31-33‰ to 18-26‰ sometimes to 11‰. The light period in Songkhla during October to February is close to 12 hours, about 2-18 minutes shorter than the rest of the

year. Photoperiod, therefore, does not vary much for the whole year in Songkhla province, Thailand (Lewmanomont and Chitpoolkusal, 1993). The sporophyte of *P. vietnamensis* appears on shells in the months of March to October during the dry season (Lewmanomont and Ogawa, 1978).

Suansongthalay (7°13'48"N, 100°34'48"E) and Kaoseng (7°10'57"N, 100°37'22"E), Songkhla province, Southern Thailand were selected for this study due to the abundance of *P. vietnamensis* during the November to March period, which is a rainy season in the Gulf of Thailand. The temperature and salinity ranges dropped from 28-31 °C and 8.17-30 ‰ respectively. At Kaoseng, the site is exposed, facing toward the ocean and has a splash zone while at Suansongthalay, the site is sheltered by an artificial wind break. The water velocity was measured at high tide in May, using MINI Current Meter model SD-6000 (Sensordata, Norway).

The *P. vietnamensis* populations were monitored for 2 years from December 2002 to February 2004. Fifty gametophyte thalli were collected randomly from both sites on 15 December 2002, 5 February 2003, 22 November 2003, 17 January and 29 February 2004. A total of five hundred thalli were gently removed and preserved in 4% seawater formalin for measurement in the laboratory. Length (mm) width (mm) and dry weight (mg) of each thallus were measured using the electronic caliper PD-151 (Pro'sKit, Taiwan) and electronic balance JP-3000 W (Chyo, Japan), respectively.

Physical parameters such as salinity and temperature were recorded at each site. Phosphates and nitrates were provided by NICA (National Institute of Coastal Aquaculture), Songkhla. Wind speed and direction data were provided by Thai Meteorological Department.

Analysis of variance (ANOVA) was employed to test the effect of sites and times of collection on length, width and dry weight of *Porphyra*, PO₄, NO₃, seawater temperature and salinity. If necessary, data were transformed to meet the assumptions of the parametric test. Multiple comparisons were made following Zar (1984). Statistical results were presented based on the transformed analyses, but for clarity graphical output was based on the untransformed means. SPSS Version 15.0 was used for all analyses.

4) *Caulerpa racemosa* population study

The population of *C. racemosa* studied are from the shallow subtidal reefs, 1-2 meters depth, at Koh Kham, Songkhla province, Southern Thailand (6° 71'N, 100° 20'E). The main oceanographic characteristics and the dynamics of the coral reef community of Koh Kham were reported in EIA study on gas separation and piping in Songkhla province (Prince of Songkla University, 2000), but macroalgae populations were not studied. Koh Kham is located on the Gulf of Thailand, nearly 2 kilometers from the coast, with little human activity in proximity to the study sites. Preliminary studies on diversity, distribution and abundance of macroalgae in

Songkhla province, Thailand, were carried out during August 2002, which showed high abundance and many big thick meadows of *C. racemosa* at the site. *C. racemosa* grows together with corals and other algae on sandy, sea shells and rocky substrates near the coral reef flat.

To study the effect of wave motion on the population and morphological plasticity, *C. racemosa* was observed at two sites: on exposed and sheltered sites. The exposed site was on the northern coast of the Koh Kham, which directly opens to the sea. The sheltered site was on the western coast of Koh Kham, where lies parallel to the shore. Also, coral forms were used as biological indicators to measure the degrees of wave exposure. On the exposed site, the higher percentage cover of massive coral such as *Platygyra* sp., *Porites lutea* Milne-Edwards and Haime, 1860 and *Goniastrea pectinata* (Ehrenberg, 1834) were dominant, while foliose coral such as *Turbinaria peltata* (Esper, 1794) had greater percentage cover on the sheltered site.

Percentage cover, frond density, mat thickness and biomass (dry weight) of *C. racemosa* were determined at 3 months intervals from November 2002 to November 2003. Samples were monitored and recorded 4 times within the wet and dry seasons in Southern Thailand. The wet season is predominated by the SW monsoon and a dry season predominated by NE monsoon. Snorkeling and SCUBA techniques were used for data and sampling collection. The wet season study was conducted during 16-17 November 2002 and 19-20 July 2003, and the dry season study during 15-16 February 2003 and 19-20 April 2003. Additional observations of *C. racemosa* population were made on 18 August 2003, 15 November 2003, 13 December 2003 and 27 August 2004. On each sampling dates, five 50 cm X 50 cm quadrats were utilized to randomly sample macroalgal communities at each site. Percentage cover and substrates of macroalgae were estimated visually and recorded at both sites. To investigate frond density, twenty-four 5 cm X 5 cm quadrats were sampled randomly at each site, a thin wooden rod was inserted into the *C. racemosa* mat to measure the mat thickness of the *C. racemosa* meadows at each site with a total of 25 replications. To study *C. racemosa* morphology and biomass, five 50 cm X 50 cm quadrats were randomly sampled at each site across the *C. racemosa* bed. All algal specimens were collected by scraping and then placed into plastic bags. They were placed in dark and cool conditions, immediately brought back to the laboratory and processed. *C. racemosa* thalli were washed; epiphytes and other benthic organisms were removed. Fronds were closely observed and dried at 60°C to constant weight. A few samples were preserved and voucher specimens were deposited at PSU herbarium, Thailand.

Two-way ANOVA was employed to test percentage cover, frond density, mat thickness and biomass against different sites and seasons. Multiple comparisons were tested when there

were significant differences between treatments, following Zar (1984). Cochran's C- test was used before each analysis, to test whether variances were homogeneous and data transformations were applied when necessary. Friedman's ANOVA was employed where homogeneity of the data set was not achieved after transformations. Tukey multiple comparison was employed to test the differences between sites and seasons. Statistical results were presented based on the transformed analyses, but for clarity graphical output was based on the untransformed means.

Results

1) Macroalgae Diversity

All four divisions of macroalgae have been found at various sites around Songkla Province (Table 1), with more than 32 species so far recorded. However, there might have some more seaweeds yet to be found and identified. Some of abundance species are chosen to study more in detail due to their interesting biology and ecology: *Caulerpa racemosa*, *Gelidium pusillum* and *Porphyra vietnamensis*. In addition, there are a few economically important species found e.g. *Gracilaria fisherii*, *Porphyra vietnamensis*, *Gelidium pusillum* and *Caulerpa* spp. These are important baseline data, which can be used for further study in aquaculture, water treatment and biotechnology.

Table 1. Some seaweed species found at various sites of Songkhla province, Thailand.

Sites	Seaweeds found
Ko Meao	<i>Acanthophora</i> sp., <i>Amphiroa</i> spp., <i>Bryopsis</i> spp., <i>Ceramium</i> sp., <i>Dictyota</i> spp.*, <i>Gelidiella</i> sp., <i>Levellia jungermannioides</i> , <i>Lobophora</i> sp., <i>Padina</i> spp.*, <i>Polysiphonia</i> spp., <i>Sargassum</i> spp*.
Ko Kham	<i>Amphiroa</i> sp. <i>Bryopsis</i> spp., <i>Caulerpa racemosa</i> **, <i>Caulerpa</i> spp., <i>Cheatomorpha</i> sp.*, <i>Chlorodesmis</i> sp., <i>Dictyopteris</i> sp., <i>Dictyota</i> spp., <i>Lobophora</i> sp., <i>Lynbya</i> sp., <i>Padina</i> spp.*, <i>Porphyra vietnamensis</i> **, <i>Valonias</i> sp.
Koa Seang	<i>Centoceras</i> sp., <i>Cladophora</i> spp.*, <i>Cheatomorpha</i> sp.*, <i>Enteromorpha</i> sp., <i>Gelidium</i> sp., <i>Gracilaria</i> sp., <i>Polysiphonia</i> spp. <i>Porphyra vietnamensis</i> *
Suan Song Tha- le	<i>Cladophora</i> spp.*, <i>Enteromorpha</i> sp., <i>Gelidium</i> sp.***, <i>Lynbya</i> sp., <i>Porphyra vietnamensis</i> **, <i>Rhizodinium</i> sp., <i>Struvea</i> sp.,
Ko Yo	<i>Gracilaria fisherii</i> *, <i>Enteromorpha</i> sp.

* Abundance species found; percentage cover more than 12,500 cm².

** Abundance species found; they have been studied more in detail due to their interesting biology and ecology.

2) *Gelidium pusillum* population study

There were variations in length of *G. pusillum* among sites and time of year ($F=15.30$, $P < 0.05$). Specimens from the sheltered shore were taller than those on the exposed shore (Fig. 2a). The average longest thalli was $1.04 \pm .03$ cm (mean \pm S.E.) on the sheltered shore during July 2003. On the exposed shore the average shortest plant was $0.6 \pm .01$ cm during May 2004 ($F=7.52$, $P<0.05$). Many bleached tips in late April and beginning of May were observed.

There were variations in percentage cover of *G. pusillum* both among sites and time of year ($F=5.02$, $P < 0.05$). The highest percentage cover was 82.8 ± 2.3 (Mean \pm S.E.) during July 2003 on the exposed area (Fig. 2b). Significant greater percentage cover of *G. pusillum* was

found on the exposed area throughout the study ($F=99.86$, $P < 0.001$). The lowest percentage cover was 39.7 ± 6.06 in October on the exposed shore; and the lowest percentage cover of the sheltered shore was 7.8 ± 2.49 in June 2004, after the bleaching phenomenon observed.

Seasonal variation in percentage of reproduction was striking. Plants reproduced throughout the year, except for November and December 2003, the beginning of the rainy season (Fig. 3a). Both tetraspores and carpospores were observed, but spermatangia were never found in this study. There was greater percentage of tetrasporophytic plants in this population. For example, more than 33% of tetrasporophytic plants were found in July 2003 and February 2004. But also only a few cystocarpic plants were found.

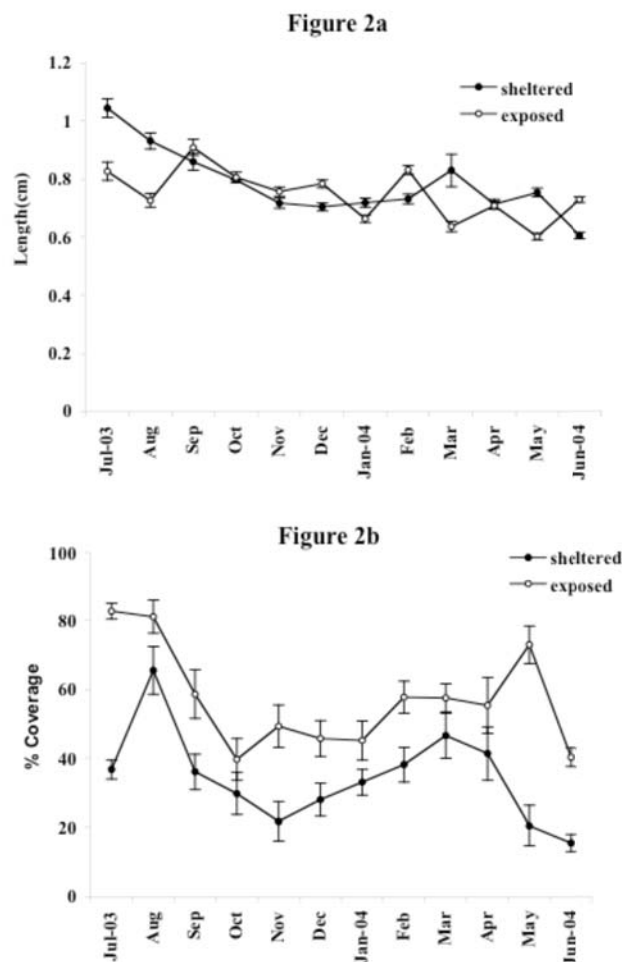


Figure 2 *Gelidium pusillum* population. Effects of wave exposure on length (2a) and % coverage (2b) throughout the year

There were variations in number of tetrasporic sori of *G. pusillum* among sites and seasons ($F=4.49$, $P < 0.001$). In general the thalli produced great numbers of tetraspores. The highest number of tetrasporic sori was 31.91 ± 6.01 sori /frond in January 2004, however, as mentioned above, there were no reproductive fronds in November and December 2003, (Fig. 3b). There were variations of number of cystocarpic specimens among sites and seasons ($F=22.97$, $P < 0.001$). The highest number was $3.52 \pm .089$ cystocarps/ frond in April 2004 at the exposed shore site (Fig. 3c). This suggests that there were male gametophytes in the previous months.

Percentage cover and length of *G. pusillum* were significantly influenced by temperature and rainfall, but there were no strong correlations with either parameter (Table 2). Increased temperature decreased the frond length and some bleaching was observed. The bleached fronds later died off and washed away during the rainy season. After that, of course, the percentage coverage declined.

Reproduction and the number of reproductive structures were significantly influenced by temperature and rainfall (Table 2). High temperature not only stressed reproduction but also caused the plants to die off. However, an increase in temperature was correlated with a fewer cystocarpic fronds (Fig. 4). Rainfall, caused a decrease in salinity to <10 psu during the rainy season. This low salinity is also correlated with low reproduction as expressed in percentage of reproductive fronds (Fig. 5). No reproductive fronds were observed during the mid-rainy season in November-December 2003.

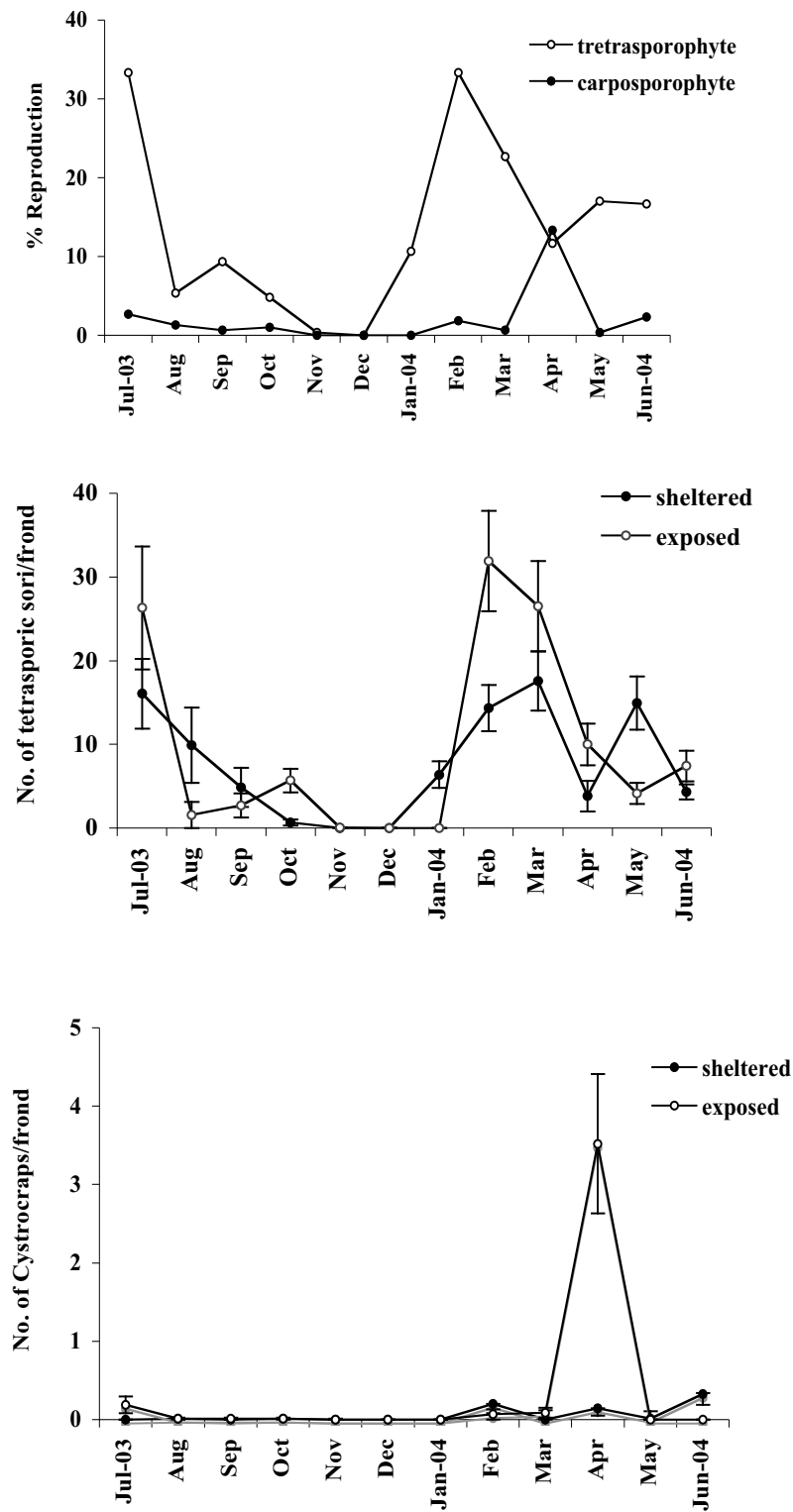
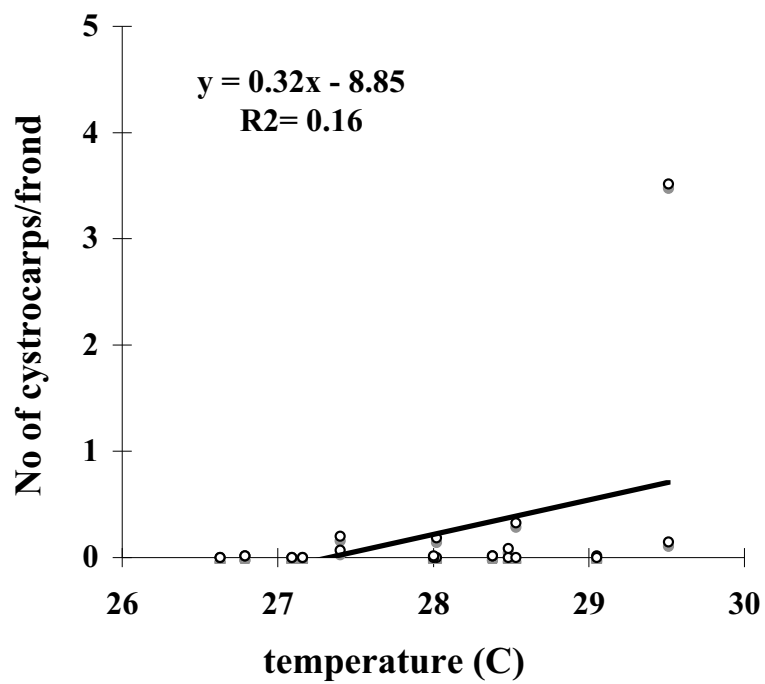
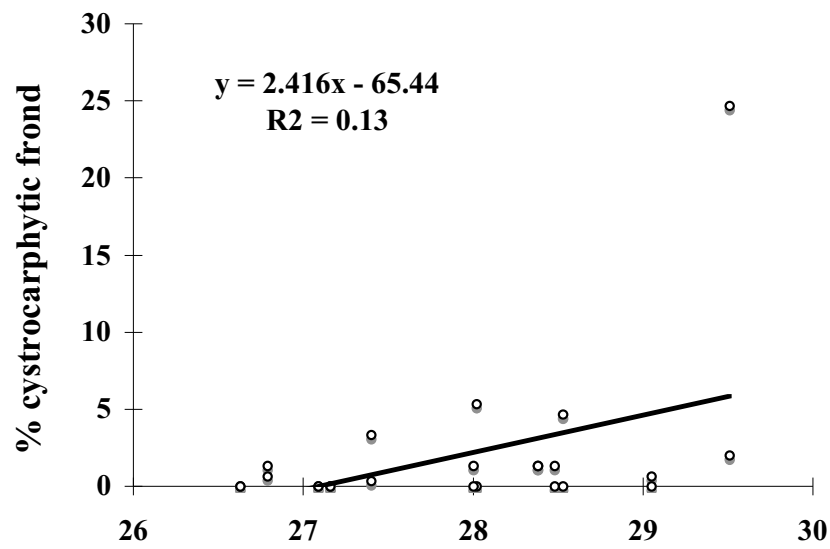


Figure 3 *Gelidium pusillum* population. Effects of wave exposure on % reproduction (3a), No. of tetrasporic sori/ frond (3b) and No. of cystocarps/ frond 3c) throughout the year

Table 2. Summarize of length, percentage cover, percentage of reproductive fronds and number of reproductive organs of *G. pulchellum* at the sheltered and exposed areas; and its relations to temperature and rainfall during July 2003-June 2004 at Songkhla province, Thailand.

		Sheltered area	Exposed area	Temperature (°C)		Rainfall (mm)	
	N	Mean ± S.E.	Mean ± S.E.	R^2	P	R^2	P
Length	1800	0.759±0.007	0.736±0.005	0.18	0.52	0.001	0.85
% Cover	150	35.14±1.65	63.01±1.87	0.07	0.22	0.1	0.131
% Reproductive fronds	12	15.66±3.22	15.88±4.81	0.22	0.13	0.49	<0.01
% Tetrasporic frond	12	14.61±3.01	12.92±4.04	0.08	0.18	0.36	<0.001
% Cystocarpic frond	12	1.05±0.44	2.97±2.01	0.18	< 0.05	0.05	0.31
No. of tetrasporic sori/ frond	1800	7.38±0.06	9.62±0.96	0.07	0.23	0.27	<0.001
No. of cystocarps/frond	1800	0.06±0.02	0.36±0.08	0.16	0.05	0.03	0.38



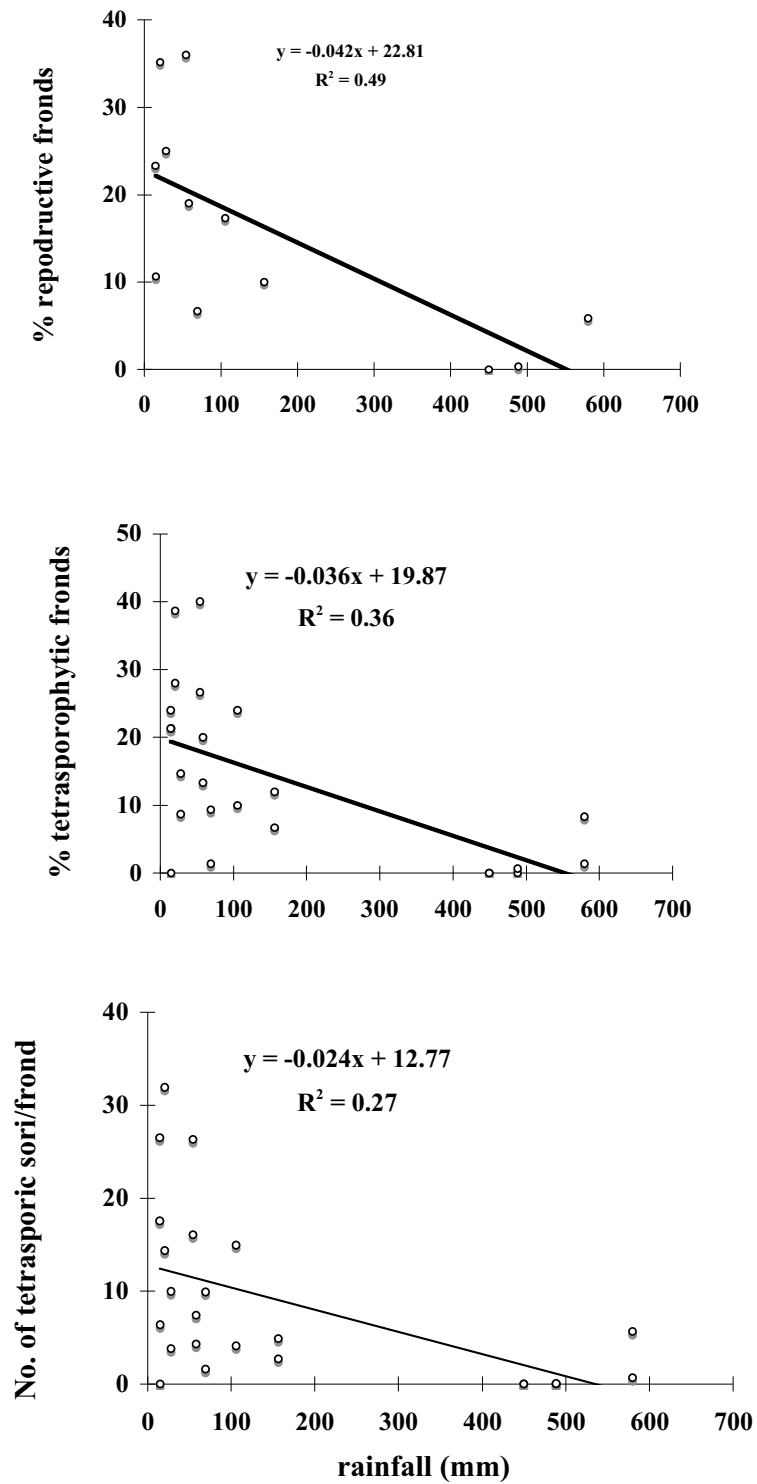


Figure 5 Significant correlation between temperature and % cystocarpytic frond and No. of cystocarps/ frond of *Gelidium pusillum*

3) *Porphyra vietnamensis* population study

There were no significant differences in water temperature, salinity, nitrates and phosphates between the two sites ($P>0.05$). The average water temperature, salinity, nitrates and phosphates at both sites were 29.83 ± 0.33 °C, 26.71 ± 2.11 ‰, 0.0668 ± 0.0107 mg/l, and 0.0145 ± 0.0022 mg/l, respectively. Linear regressions of all parameters showed that there was no relationship between these factors on length, width, and dry weight of *P. vietnamensis* (Table 3). However, the average water motion at the exposed shore was higher than at the sheltered shore. Water splashing was also greater. The water velocity at Kaoseng was 3 times greater than at Suansongtalay, 0.106 ± 0.016 ms⁻¹ and 0.034 ± 0.007 ms⁻¹, respectively. In addition, greater wave motion and water velocity are expected during the monsoon season and is on average 3.98 knots, compared to only 1.98 knots in dry season.

Table 3. Summarize of length, width, and dry weight of *Porphyra vietnamensis* Tanaka et Pham-Hoang Ho at the sheltered and exposed areas; and its relations to temperature, salinity, wind speed, nitrate, and phosphate during December 2002 – February 2004 at Songkhla province, Thailand.

	N	Sheltered area	Exposed area	P	Temperature (°C)		Salinity (ppt)		Nitrate (mg/l)		Phosphate (mg/l)	
		Mean±SE	Mean±SE		R ²	P	R ²	P	R ²	P	R ²	P
Length (cm)	320	39.55±2.19	29.12±1.42	0.00	0.217	0.174	0.372	0.061	0.004	0.862	0.007	0.815
Width (cm)	150	5.8±0.34	9.9±0.78	0.00	0.125	0.316	0.129	0.308	0.001	0.918	0.016	0.729
Dry weight (mg)	320	17.4±1.4	24.4±2.8	0.00	0.043	0.566	0.005	0.85	0.022	0.682	0.508	0.021

Growth and Shape of *P. vietnamensis*

Length (mm), width (mm) and dry weight (mg) of *P. vietnamensis* varied between sites ($p<0.05$) (Table 3, 4). The largest fronds at 37.5 ± 2.1 mg were found in February 2003 at the sheltered shore and 37.3 ± 3.9 mg in January 2004 at the exposed shore, while the lowest was found in November 2003, at 3.2 ± 0.4 mg at sheltered site (Table 4). In February 2004, *Porphyra* thalli were not found at Suansongtalay, the sheltered area (Table 4).

Table 4. Summarize of length, width, and dry weight of *Porphyra vietnamensis* Tanaka et Pham-Hoang Ho at the sheltered and exposed areas during December 2002 – February 2004 at Songkhla province, Thailand.

	N	Sheltered area					Exposed area				
		Mean±SE					Mean±SE				
		Dec-02	Feb-03	Nov-03	Jan-04	Feb-04	Dec-02	Feb-03	Nov-03	Jan-04	Feb-04
Length (mm)	320	60.54 +3.86	44.88 +1.89	62.57 +3.06	30.30 +2.16	x	30.32 +1.38	27.94 +0.89	26.23 +1.52	32.08 +1.47	29.04 +1.81
Width (mm)	150	-	-	4.92 +0.26	24.1 +1.46	x	-	-	12.74 +0.85	20.48 +2.04	16.33 +0.99
Dry weight (mg)	320	17.8 +1.6	37.5 +2.1	3.2 +0.4	28.5 +2.8	x	23.6 +2.2	26.6 +2.6	13.9 +1.5	37.3 +3.9	20.6 +3.8

* - : no data; x: not found *P. vietnamensis*

The shape of *P. vietnamensis* varied between sites and among the times of sampling. The thalli at exposed site, were shorter and wider than at the sheltered site. At both sites the blades were narrow and thin during the early sampling period (November and December), and wider and thicker at late sampling period (January and February) (Fig. 6).

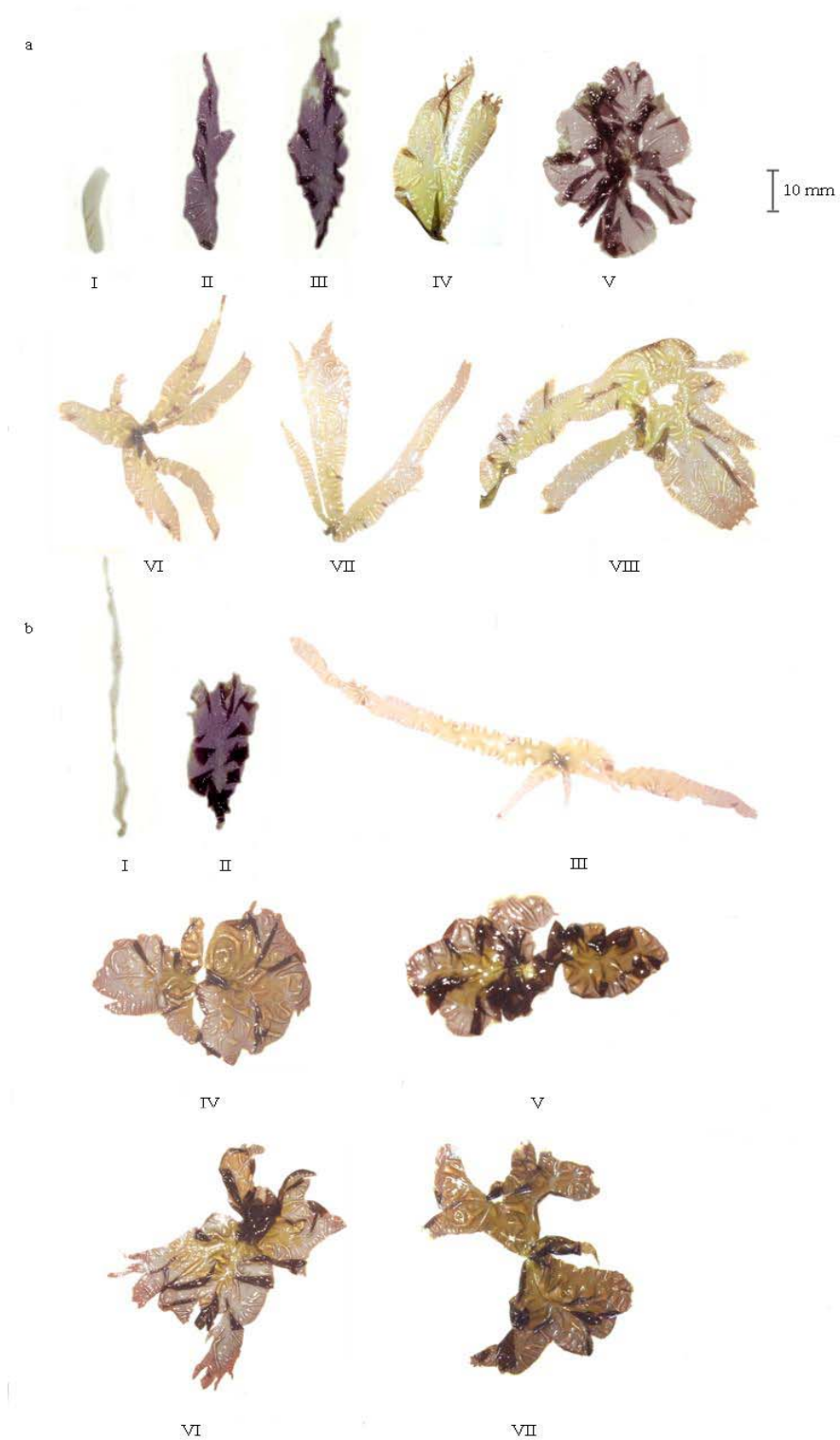


Figure 6 Blade shape of *Porphyra vietnamensis* Tanaka et Pham-Hoang Ho at November 2003 – December 2006 at exposed and sheltered area. Site a: Kaoseng (exposed area), site b: Suansongtalay (sheltered area), I=Dec 02, II=Feb 03, III=Nov 03, IV=Jan 04, V-VIII= Jan 07.

4) *Caulerpa racemosa* populations study

Percentage cover, frond density, biomass and mat thickness of *C. racemosa* varied among sites and seasons. Slightly greater percentage cover of *C. racemosa* occurred on the sheltered site compared to the exposed site, with significant differences among months ($\chi^2 = 27.11$; $df = 7$, $N = 5$, $P < 0.001$; Fig. 7A). *C. racemosa* was very abundant at the site, the maximum percentage cover of *C. racemosa* was found on the sheltered shore during late rainy season and early wet season, around 80% of percentage cover at both sites. Subsequently, in the dry season the percentage cover of *C. racemosa* dropped to 50% when some unhealthy, yellowish fronds were observed. Surprisingly, disappearance of *C. racemosa* occurred in July, 2003. Also, there was no recovery or recruitment of *C. racemosa* population upon revisiting the site in August 2003, November 2003 and December 2003 and August 2004.

Similar patterns were found in *C. racemosa* frond density. There was slightly greater frond density on the sheltered than on the exposed sites, with significant differences among months ($\chi^2 = 107.71$; $df = 7$, $N = 24$, $P < 0.001$; Fig. 7B). *C. racemosa* patches contained very dense greenish fronds. The maximum densest fronds were found at the sheltered site during late rainy season and at the early wet season, 1.75 fronds/cm² in November 2002 and 1.85 fronds/cm² in February 2003 respectively. It was worthwhile to note that there were some *C. racemosa* patches washed up on the shore both on the sheltered and exposed sites. Frond density dropped by 50% in dry season with more *C. racemosa* patches were washed up along the shores; and disappearance of *C. racemosa* was later recorded.

In contrast, *C. racemosa* biomass was significantly greater during the dry seasons. Three hundred percent higher biomass was present in the dry season (April 2003), as compared to the wet season (November 2002) ($F_{(3,14)} = 21.44$, $P < 0.0001$; Fig. 7C), but there was no significant difference between different exposures ($F_{(1,14)} = 1.10$, $P = 0.31$). Due to the very strong wave action, *C. racemosa* stand could not be collected on the exposed site, thus no data was presented for the February, 2003 sampling event.

Similar patterns were found for the mat thickness of *C. racemosa*. There were significant differences in mat thickness among months ($F_{(1,24)} = 271.96$, $P < 0.01$; Fig. 7D). The thickness of *C. racemosa* mat was increased almost 300% in the early dry season compared to those in the wet season, however they became thinner in the middle of the dry season and no differences were found among sites ($F_{(1,192)} = 0.20$, $P = 0.65$).

In addition, close observation on *C. racemosa* fronds showed no differences in frond morphology among sites and seasons. Similar shapes and size of ramuli were found at both

sites. Also, *C. racemosa* fronds underneath the canopy were observed to be bigger and greener than those on the upper part of the patches during February and April 2003.

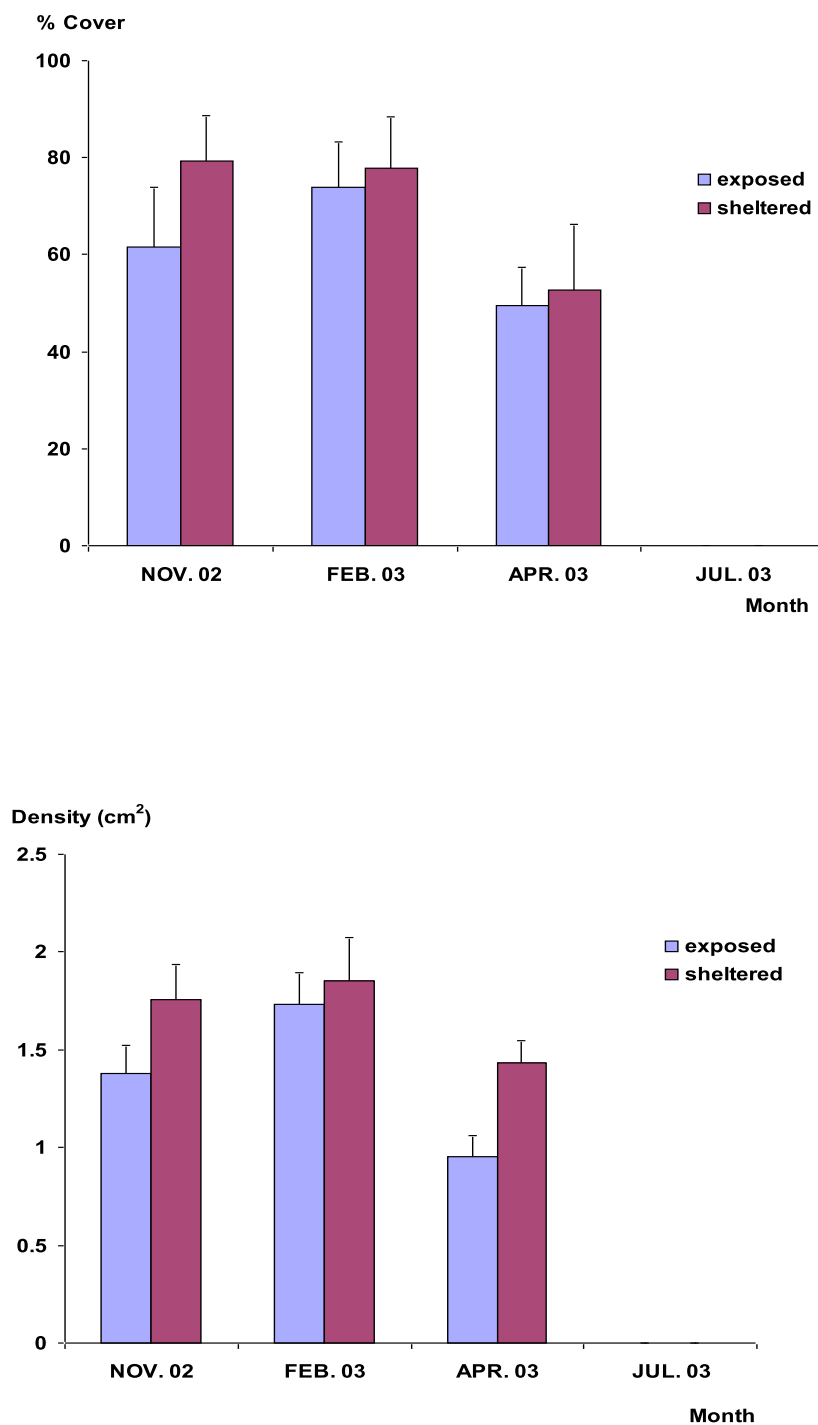


Figure 7 Population characteristics *Caulerpa racemosa* varied among sites and seasons; Figure 7a: percentage cover, Figure 7b: frond density

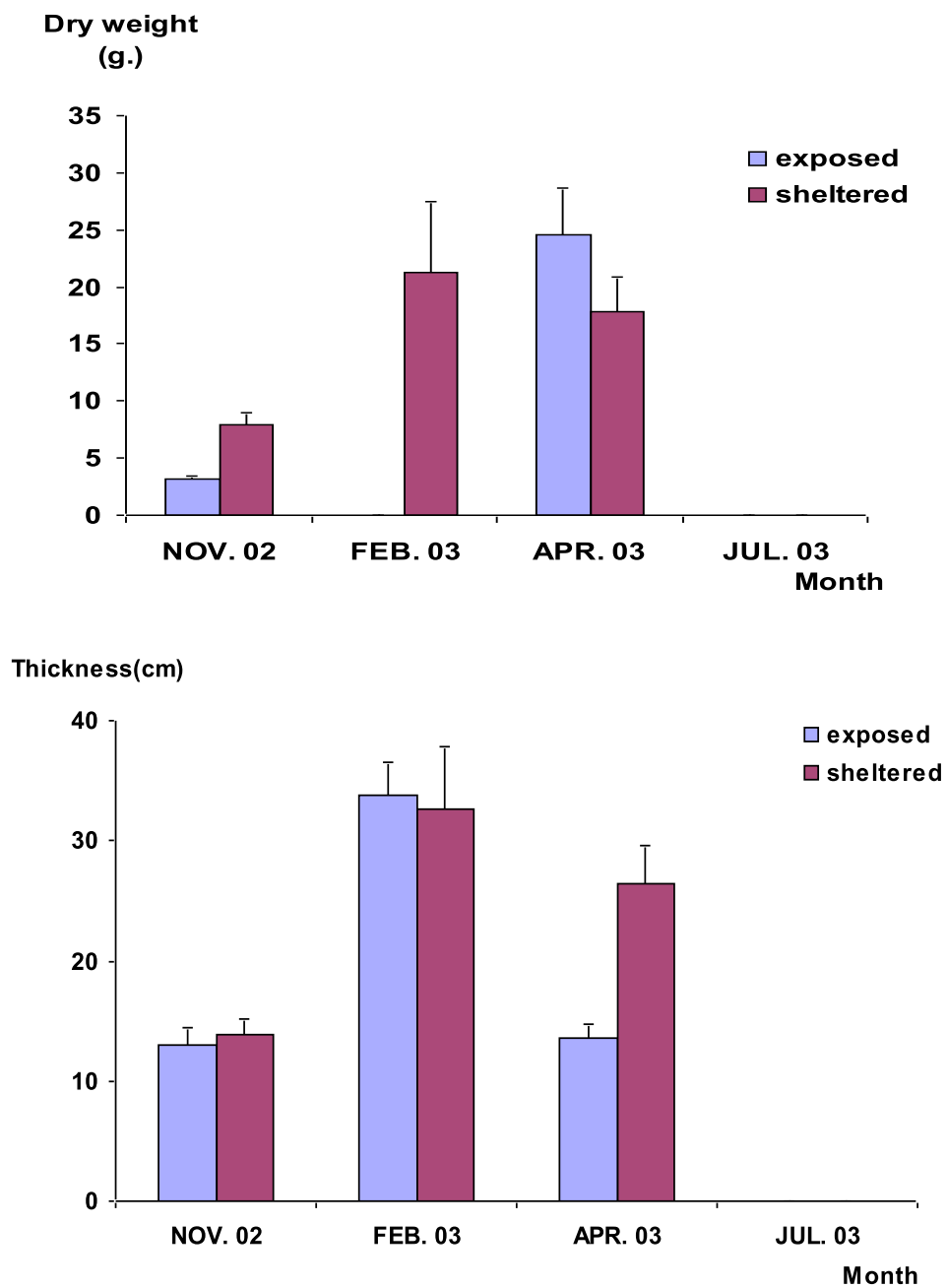


Figure 7 (Cont.) Population characteristics *Caulerpa racemosa* varied among sites and seasons; Figure 7c: biomass and Figure 7d: mat thickness

Discussion

This study has revealed macroalgae diversity at Songkhla province; and provide the seaweed biodiversity and ecology in Thailand. This study is among a few study done on macroalgae research in Thailand. This study has been focused on both economically and ecologically important species: *Gelidium pusillum*, *Porphyra vietnamensis* and *Caulerpa racemosa*.

1) *Gelidium pusillum* population study

The presence of a greater number of tetrasporophytic fronds than cystocarpic fronds, and only a few male or female gametophytic fronds was common in *G. pusillum*. This conforms to the reports for the family Gelidaceae (Akatsuka 1986; Santelices 1988; Serviere-Zaragoza and Scrosati, 2002). However in the closely related order, Gigartinales, gametophytes are the dominant life phase (DeWreede and Green, 1990; Hommersand et al., 1993; Scrosati et al., 1994). In this study the number of cystocarps was influenced by wave exposure. The cystocarps observed were on thalli from the exposed area just after the rainy season, a situation that might be caused by the greater water motion which could increase the success of fertilization by enhancing the ability of the nonmotile spermatia to encounter the trichogyne of the carpogonium.

Plants reproduced throughout the year, a condition which, together with the vegetative reproduction, accounts for the great percentage cover of this species in the study sites. The dense stand of algal-forming turf can persist under high stress along the intertidal shore (Hay, 1981; Guiry and Womersley, 1993). Since fronds could grow into 2 directions both as creeping axes and as uprights, the former withstands the high wave motion and provides a base for the shorter upright axes such as were found in the wave-exposed area. Although, this species is known as a perennial plant, the upright fronds bleached during summer months, when the apical tips became weak, the fronds became shorter and died, decreasing the coverage of the plants two months shortly after. This is similar to the pattern of many other turf forming red algae (Beach and Smith, 1996; Scrosati and DeWreede, 1998).

The onset of tetraspore and carpospore production did not reflect a physiological trade-off between resource allocation to vegetative growth and allocation to reproduction as suggested by Harper and Ogden (1970). *G. pusillum* reproduced spores throughout the year, except in November and December, without any decline of length, density or die off. Although known to be perennial, reproduction was not reduced as hypothesized (Bell 1984a) by the idea that plants reduce allocation to individual growth or general maintenance (Bell 1984b; Obeso

2002) in favor of reproductive cell formation or vice versa. It is possible that resources at the site exceed the requirements. Nutrient levels were high throughout the year. The highest was found during the rainy season, NO₃-1 was 0.12 mg/l and PO₄-3 was 0.024 mg/l.

The rainfall, which decreased the salinity, might be expected to inhibit reproduction. Although increased temperature caused bleaching and later die off, the decline of reproduction might be due to lower salinity, which was < 10 psu at the site during the rainy season. The salinity stress lower than 15 psu was reported to reduce growth rate to almost 5 times in some *Gelidium* spp. (Oliger and Santelices, 1981). This is known to cause a decrease in productivity and reproduction in many red algae and now in *G. pusillum* as well.

There were no shifts of life phase between seasons and sites in *G. pusillum* as has been observed in *Mazzaella* spp. (Mudge and Scrosati, 2003; Scrosati and Mudge, 2004). A predominance of tetrasporophytes is a common feature in *Gelidium* (Montalva and Santelices 1981; Carter 1985, Akatsuka 1986; Macler and West 1987; Santelices 1990; Melo and Neushul 1993; Sosa et al. 1993). Carmona and Santos (2006) have recently tested the advantages of tetrasporophytes over the gametophytes in *G. sesquipedale* through their ecophysiological performance. They found that there were no significant differences either in the photosynthesis rate, nitrogen uptake, nitrate reductase activity, or biochemical composition of phases, but there was an advantage in vegetative recruitment and spore production. The dominance of tetrasporophytes of *G. sesquipedale* cannot be explained but it does reflect the nature of the success of this turf-forming alga throughout the world.

The G:T ratio of *G. pusillum* in our study was 1:14; the G:T ratio in *Gelidium* may be as high as 1:20. Abbott (1980) suggested that this might be because of the failure in the viability of tetraspores, which are the sources of gametophytes and/or the enhanced capability of carpospores to produce tetrasporophytes. Although, we found some mature red tetraspores and carpospores in our study, newly recruited plants were rarely observed. After release spores could be washed away or trapped within the turf, which form new thalli within the patch. Further investigation of spore settlement, recruitment and development both in laboratory and field would allow us to have a better understanding of the population structure and its maintenance in what appears to be a unique red algal species.

2) *Porphyra vietnamensis* population study

Porphyra vietnamensis s gametophyte thalli were present on rocks at Kaoseng and Suansongtalay in the months of November to February, the rainy, coolest time of the year, as also reported by Lewmanomont and Ogawa (1978) and Ruangchuay and Notoya (2007). The smallest fronds of *P. vietnamensis* were found in November which is the first period of its development while the largest were found in the later period, January and February. During

March to October, the conchocelis stage, the sporophyte, was found on the underside of shells. Temperature and salinity are known to be the major environmental factors inducing conchospore release of *P. vietnamensis* in Songkhla Province (Lewmanomont and Chittpoolkusol, 1993). Oyster shells and barnacles were collected from both sites; and the filamentous conchocelis phase was observed and then gametophytes later.

Heteromorphic life cycle of *Porphyra* is unique and complex. The gametophyte and sporophyte phases of *P. vietnamensis* develop at different times of the year. The different phenotypes have advantages by being able to inhabit different ecological niches which, besides other factors, may have different grazing pressures (Taylor and Hay, 1984; Thornber, 2006). Many species have complex life histories as for example, the brown algae, *Lessonia nigrescens*, *Macrocystis pyrifera*, and *Ecklonia radiata*; the brown crust *Ralfsia californica*; and the green alga *Acrosiphonia* spp (Dethier, 1981; Martinez and Santelices, 1998; Sussmann and DeWreede, 2001; Nelson and Schwarz, 2005). The heteromorphic life cycle of *P. vietnamensis* is useful in promoting cultivation because the conchocelis phase can be kept conveniently in small spaces as stock before putting it out into the larger scale cultivation of the marketable gametophyte.

Porphyra thalli at Suansongtalay, the more sheltered and less water-splashed area, disappeared earlier than at Kaoseng. The water splashing decreases desiccation, which increases in late February. In this study the higher temperature in February during 2004 could have caused greater desiccation and die off of gametophyte. Desiccation is known to limit the distribution and life span of many intertidal organisms including seaweeds (Tomanek and Helmuth, 2002)

The shape of *P. vietnamensis* differed at the two sites. The shorter and wider blades were found in exposed area, while the narrower and thinner blades were found at sheltered area. The adaptation of *Porphyra* might give an advantage for survival in the wave-swept rocky intertidal zone. This pattern is found in many marine algae such as *Chondrus crispus*, *Codium fragile*, *Mastocarpus papillatus*, and *Turbinaria ornata* (Kitzes and Denny, 2005; Boller and Carrington, 2006; D'Amours and Scheibling, 2007; Prathep et. al, 2007). However, the size of seaweed is influenced by other physiological and ecological factors, i.e. reproduction, photosynthesis, nutrient uptake and competition. Large macroalgae have more competitive and reproductive advantages than small macroalgae (Dudgeon and Johnson, 1992; Gaylord et al., 1994; Blanchette et al., 2002; D'Amours and Scheibling, 2007). Thus, variation in morphology could be a trade-off between the dislodgement of blade and these factors. Our study shows that wave action plays an important role in establishing the phenotype of *Porphyra* populations.

In 1978, Lewmanomont and Ogawa reported that *Porphyra* in Thailand was harvested and sold on a small scale at US\$6 to 15 kg⁻¹, depending on the quality. An attempt to cultivate *Porphyra* at Kaoseng; was made in 1978. However, it was not successful due to the high water velocity. We suggest that *P. vietnamensis* cultivation should be promoted in Thailand, Vietnam, South East Asia and South Asia, since the of life cycle, biology and ecology of *P. vietnamensis* are now better understood. In addition, there are many techniques and technologies which have been used in the cultivation of *P. yezoensis*, *P. haitanensis* and *P. tenera* with great success in East Asia (Ayano et al., 1998; Han, 2006; Cultured Aquatic Species Information Programme, 2007; Monterey Bay Aquarium Research Institute, 2007).

3) *Caulerpa racemosa* population study

Many studies have shown that there is significant morphological plasticity of *C. racemosa* due to various physical factors such as temperature, light, salinity and wave motions (Calvert, 1976; Ohba et al., 1992; Carruthers et al., 1993; Gacia et al., 1996; Verlaque et al., 2000; de Senerpont Domis et al., 2003). Surprising, this study showed no differences in percentage cover, frond density, mat thickness, biomass and frond morphology of *C. racemosa* between exposed and sheltered sites. The large meadows of *C. racemosa*, dense compact stolons and fronds are similar to those known to form turf-forming communities in coral reef habitats. The turf-forming algae are known to be an adaptation against herbivory and desiccation (Hay, 1981) and against excessive irradiance which may cause bleaching in many algae (Hay, 1986; Beach and Smith, 1996 a, b). It is also known to reduce water velocities over the individual fronds (Hurd and Stevens, 1997). Thus, there might have been very little influence in such physical factors over *C. racemosa* turfs at both sites, hence similar patterns of *C. racemosa* population were found.

Temporal variations in percentage cover, frond density, mat thickness and biomass were found in the big thick mats of *C. racemosa*, that once covered areas of more than 1,625 m². Populations sharply declined by 50% in April, the middle of dry season. Also, *C. racemosa* fronds underneath the canopy were observed to be bigger and greener than those on the upper part of the patches. Greater exposure to high light could cause bleaching and die off in some other marine algae (Beach and Smith 1997; Scrosati and DeWreede, 1998). Thus, greater exposure to high light in February and April of *C. racemosa* may have caused yellowish unhealthy fronds and later died-off.

Although, seawater temperature of tropical sea is relatively constant (Scrosati, 2001), *C. racemosa* population inhabited at the shallow subtidal with only 1-2 meters depth and may be influenced by an increase of in seawater temperature and greater irradiance in the dry season when the tide was out. The long term monitoring data set of 12 years showed that February

has the minimum rainfall and April was the month with the warmest air temperature at over 30 °C (Prince of Songkla University, 2000), such condition during dry season may have caused the 50% dropped of *C. racemosa* population as shown in the results. The decline of *C. racemosa* populations reported here, therefore, may be a result of a combination of an increased seawater temperature and greater irradiance.

Surprisingly, the *C. racemosa* population disappeared in July 2003 at the beginning of wet season. Although, there was already a record of population dropping in previous sampling, it seemed unlikely to result in the disappearance of such massive populations of *C. racemosa* unless biomass removal was alternatively the result of a typhoon or an endemic pathogen. However, there was no any catastrophic tropical weather event reported during this period. Incidentally, no changes in other marine algae and fauna were noticed at the site. In addition, *Caulerpa* spp. are known to contain secondary compounds such as caulerpin, caulerpicin and caulerpenyne, which are known to deter fishes and other potential marine predators (Hatta, 2001). These toxins help to maintain and make *Caulerpa* population stable and are very successful in favorable conditions in the Mediterranean Sea (Meinesz et al., 1995; Ceccherelli and Cinelli, 1999). Our observations did not indicate the presence of grazing activity.

Some studies have shown population *Caulerpa* decline and died-off after releasing gametes both in the field (Clifton, 1997; Clifton and Clifton, 1999) and in laboratory (Panayotidis and Zuljevic, 2001; de Senerpont Domis et al., 2003). In the field, *C. racemosa* was found releasing their gametes in the early morning after sunrise, however which environmental or biological factors triggering the onset of the sexual reproduction remain unknown (Clifton, 1997). When the conditions become favorable for sexual reproduction, fronds became fertile within 12 hours and it would take only short period of time for gametes releasing. As a result, *Caulerpa* population may disappear in a very short period of time; as short as 3 hours depending on wave motion and currents (Clifton and Clifton, 1999).

The disappearance of such an expansive population of *C. racemosa* in the same period of time is suggestive of sexual reproduction and resulting decline of the population in this study. *Caulerpa* have been classified as a clonal organism (Collado-Vides, 2002) due to their siphonous fronds connection, thus the population may be influenced by the effects of an environmental conditions throughout the clonal mat (de Kroon and Schieving, 1990). They also could have the same set of genetic materials as they could reproduce and increase their population size by asexual reproduction or fragmentation, which already has reported to have resulted in successful population increases in the Mediterranean sea (Panayotidis and Zuljevic, 2001). Therefore, the populations of *Caulerpa* at Koh Kham likely originated from the same parents cell with similar ages, resulting in simultaneous fertility, gamete release, and die-off during the same period of time.

Recruitment and recovering of new population of *C. racemosa* should be found within a few months after sexual reproduction (Clifton and Clifton, 1999). However, after revisiting at the study sites several times for over a year after the disappearance of *C. racemosa*, there has been no recruitment and recovery of *C. racemosa* population. There were only a few patches of small *C. racemosa* observed in the rock cracks or coral crevices. The unsuccessful recruitment of sexually produced gametes of *C. racemosa* in the early rainy season, may have been a result of greater wave motion, as increasing wave motion would dilute gametes and decrease fertilization success (Gordon and Brawley, 2004). The vegetative reproduction and fragmentation, therefore, might be an adaptation of this tropical green alga to maintain its population.

This study was the first to report population dynamics and the disappearance of *C. racemosa* in the tropical shallow subtidal reef in Southeast Asia and Thailand. The incidence of sexual reproduction in this invasive species is still poorly known, thus further studies on what triggers the onset of sexual reproduction would be very useful. Also, this information would be very useful for understanding the population dynamics of this genus of highly invasive macroalgae.

References

- Abbott IA (1980) Seasonal population biology of some carragenophytes and agarophytes. In: Abbott IA, Foster MS, Eklund, IF (eds), Symposium on Useful Algae. Seagrant Program, La Jolla CA, pp 45–53
- Airolidi L, Fabiano M, Cinelli F (1996) Sediment deposition and movement over a turf assemblage in a shallow rocky coastal area of the Ligurian Sea. *Mar Ecol Prog Ser* 133: 241-251
- Airolidi L (1998) Roles of disturbance, sediment and substratum retention on spatial dominance in algal turf. *Ecology* 79: 2759-2770
- Akatsuka I (1986) Japanese Gelidiales (Rhodophyta), especially *Gelidium*. *Oceanogr Mar Biol Annu Rev* 24:171–263
- Ali MS, Saleem M, Yamdagni R, Ali MA (2002) Steroids and antibacterial steroidal-glycosides from marine green alga *Codium iyengarii* Borgesen, *Nat Prod Lett* 16(4): 407-413
- Aussem A, Hill D (2000) Neural-network metamodelling for the prediction of *Caulerpa taxifolia* development in the Mediterranean sea. *Neurocomputing* 30:71-78
- Avila M, Santelices B, McLachlan J (1986) Photoperiod and temperature regulation of the life history of *Porphyra columbina* (Rhodophyta, Bangiales) from central Chile. *Can J Bot* 64: 1867-1872.
- Ayano Y, Koichi N, Naotsune S (1998) Axenic tissue culture and morphogenesis in *Porphyra yezoensis* (Bangiales, Rhodophyta). *J Phycol* 34:1082-1087
- Beach KS, Smith CM (1996a) Ecophysiology of tropical rhodophytes I: microscale acclimation in pigmentation. *J Phycol* 32: 701-709
- Beach KS, Smith CM (1996b) Ecophysiology of tropical rhodophytes II; microscale acclimation in photosynthesis. *J Phycol* 32: 710-718
- Beach KS, Smith CM (1997) Ecophysiology of a tropical rhodophyte III: recovery from emersion stresses in *Ahnfeltiopsis concinna* (J. Ag.) Silva et DeCew. *J Exp Mar Biol Ecol* 211: 151-167
- Bell G (1984a) Measuring the cost of reproduction. I. The correlation structure of the life table of a plankton rotifer. *Evolution* 38:300–313
- Bell G (1984b) Measuring the cost of reproduction. II. The correlation structure of the life tables of five freshwater invertebrates. *Evolution* 38:314–326
- Benzie JA, Ballment E, Chisholm JRM, Jaubert JM (2000) Genetic variation of green alga *Caulerpa taxifolia*. *Aquat Bot* 66: 131-139
- Bird CJ, Chen CM, McLanhlán J (1972) The culture of *Porphyra linearis* (Bangiales, Rhodophyceae). *Can J Bot* 50: 1859-1863

- Blanchetter CA (1997) Size and survival of intertidal plants in response to wave action: a case study with *Fucus gardneri*. *Ecology* 78:1563–1578
- Blanchette CA, Thornber C, Gaines SD (2002) Effects of wave exposure on intertidal furoid algae. *Proceedings of the California Islands Symposium* 5:347-355.
- Boller ML, Carrington E (2006) The hydrodynamic effects of shape and size change during reconfiguration of a flexible macroalga. *J Exp Biol* 209:1894-1903.
- Calvert H (1976) Culture studies on some Florida species of *Caulerpa*: morphological responses to reduced illumination. *Br Phycol J* 11: 203-214
- Carruthers TJB, Walker DI, Huisman JM (1993) Culture studies on two morphological types of *Caulerpa* (Chlorophyta) from Perth, Western Australia, with a description of a new species. *Bot Mar* 36: 589-596
- Carrington E (2002) The ecomechanics of mussel attachment: from molecules to ecosystems. *Integr. Comp. Biol.* 42(4): 846-852.
- Carmona R, Santos R (2006) Is there an ecophysiological explanation for the gametophytes-tetrasporophyte ratio in *Gelidium sesquipedale* (Rhodophyta). *J Phycol* 42:359-269
- Carter AR (1985) Reproductive morphology and phenology, and culture studies of *Gelidium pristoides* (Rhodophyta) from Port Alfred in South Africa. *Bot Mar* 28:303–311
- Ceccherelli G, Cinelli F (1999) The role of vegetative fragmentation in dispersal of the invasive alga *Caulerpa taxifolia* in the Mediterranean. *Mar Eco Prog Ser* 182: 299-303
- Ceccherelli G, Piazzoli L, Balata D (2002) Spread of introduced *Caulerpa* species in macroalgal habitats. *J Exp Mar Biol Ecol* 280:1-11
- Chevakidagarn P (2006) Operational problems of wastewater treatment plants in Thailand and case study: wastewater pollution problems in Songkhla Lake Basin. *Songklanakarin J Sci Technol* 28(3): 633-639
- Clifton KE (1997) Mass spawning by green algae on coral reefs. *Science* 275:116-118
- Clifton KE and Clifton LM (1999) The phenology of sexual reproduction by green algae (Bryopsiales) on Caribbean coral reefs. *J Phycol* 35: 24-34
- Collado-Vides L (2002) Morphological Plasticity of *Caulerpa prolifera* (Caulerpales, Chlorophyta) in relation to growth form in a coral reef lagoon. *Bot Mar* 45: 123-129
- Conitz JM, Fagen R, Lindstrom SC, Plumley FG, Stekoll MS (2001) Growth and pigmentation of juvenile *Porphyra torta* (Rhodophyta) gametophytes in response to nitrate, salinity and inorganic carbon. *J Appl Phycol* 13:423-431

- Creed JC, Kain JM, Norton TA (1998) An experimental evaluation of density and plant size in two large brown seaweeds. *J Phycol* 34:39-52
- Cultured Aquatic Species Information Programme 2007 FAO, Rome
http://www.fao.org/fishery/culturedspecies/Porphyra_spp. Cited 29 Dec 2007.
- D'Amours O, Scheibling RE (2007) Effect of wave exposure on morphology, attachment strength and survival of the invasive green alga *Codium fragile* ssp. *tomentosoides*. *J Exp Mar Bio Eco* 351:129-142
- de Kroon H, Schieving F (1990) Resource partitioning in relation to clonal growth strategy. In: van Groenendaal J, de Kroon H (eds) *Clonal growth in plants: regulation and function*. SPB Academic Publishing, The Hague, pp 113-130
- de Senerpont Domis LN, Fam P, Bartlett, AJ, Prudhomme van Reine WF, Espinosa CA, Trono Jr. GC (2003) Defining taxon boundaries in members of the morphologically and genetically plastic genus *Caulerpa* (Caulerpales, Chlorophyta). *J Phycol* 39:1019-1037
- Denny MW (1995) Predicting physical disturbance: mechanistic approaches to the study of survivorship on wave-swept shores. *Ecol Monogr* 65:371-418
- Denny MW (1998) *Biology and the Mechanics of the Wave Swept Environment*. Princeton University Press, Princeton, NJ.
- Denny MW (1999) Are there mechanical limits to size in wave-swept organisms? *J Exp Biol* 202:3463-3467
- Denny MW (2005) Red algae respond to waves: morphological and mechanical variation in *Mastocarpus Papillatus* along a gradient of force. *Biol Bull* 208:114-119
- Denny MW, Wethey D (2000) Physical processes that generate patterns in marine communities. In M. Bertness, M. Hay, and S. Gaines (eds.) *Marine Community Ecology*, Sinauer Press, New York, pp1-37
- Dethier MN (1981) Heteromorphic algal life histories: the seasonal pattern and response to herbivory of the Brown Crust, *Ralfsia californica*. *Oecol* 49:333-339
- DeWreede RE, Green LG (1990) Patterns of gametophyte dominance of *Iridaea splendens* (Rhodophyta) in Vancouver Harbour, Vancouver, British Columbia, Canada. *J Appl Phycol* 2:27-34
- Dhargalkar VK, Agadi VV, Untawale AG (1981) Occurrence of *Porphyra vietnamensis* (Bangiales, Rhodophyta) along the Goa coast. *Mahasagar - Bulletin of the National Institute of Oceanography (India)* 14: 75-77
- Dinabandhu S, Baweja P, Kushwah N. (2007) Developmental studies in *Porphyra vietnamensis* : A high-temperature resistant species from the Indian Coast. *Proceedings of the International Seaweed Symposium* 18: 53-60

- Dixon PS, Irvine LM (1977) Seaweeds of the British Isles, vol. 1, Rhodophyta, part 1, Introduction, Nemaliales, Gigartinales. British Museum (Natural History), London
- Done TJ (1992) Phase shifts in coral reef communities and their ecological significance. *Hydrobiologia* 247:121-132
- Dudgeon SR, Johnson AS (1992) Thick vs. thin: thallus morphology and tissue mechanics influence differential drag and dislodgement of two co-dominant seaweeds. *J Exp Mar Biol Ecol* 165:23-43
- Famà P, Wysor, B, Kooistra WHCF, Zuccarello GC (2002) Molecular phylogeny of the genus *Cualerpa* (Calerpales, Chlorophyta) inferred from Chloroplast *tufA* gene. *J Phycol* 38:1040-1050
- FAO 2003 Yearbook of fishery statistics 2003. Aquaculture production 2001 Vol 92/2. Rome
- Fredriksen S, Guiry MD, Rueness J 1994 Morphological and biosystematic studies of *Gelidium pusillum* and *G. pulchellum* (Gelidiaceae, Rhodophyta) from Europe. *Phycologia* 33:462-470
- Gacia E, Littler, MM, Littler, DS 1996 The relationships between morphology and photosynthetic parameters within the polymorphic genus *Caulerpa*. *J Exp Mar Biol Ecol* 204:209-224
- Gaylord B, Blanchette CA and Denny MW 1994 Mechanical consequences of size in wave-swept algae. *Ecol Monogr* 64(3):287-313
- Genin A, Lazar B, Brenner S (1995) Vertical mixing and coral death in the Red Sea following the eruption of Mount Pinatubo. *Nature* 377:507-510
- Gordon R, Brawley SH (2004) Effect of water motion on propagule release from algae with complex life histories. *Mar Biol* 145(1):21-29
- Guiry MD, Womersley HBS (1993) *Capreolia implexa* gen. et sp. nov. (Gelidiales, Rhodophyta) in Australia and New Zealand: an intertidal matforming alga with an unusual life history. *Phycologia* 32: 266-277
- Haper, JL, Ogden J (1970) The reproductive strategy of higher plants: I. The concept of strategy with special reference to *Senecio vulgaris* L. *J Ecol* 58:681-698
- Han KL (2006) Korean aquaculture status and future directions. National Fisheries Research and Development Institute. 12:4-8
- Hay ME (1981) The functional morphology of turf-forming seaweeds: persistence in stressful marine habitats. *Ecology* 62:739-750
- Hay ME (1986) Functional geometry of seaweeds; ecological consequences of thallus layering and shape in contrasting light environments. In: Givnis TJ (ed) On the economy of plant form and function. Cambridge University Press, Cambridge, pp 635-666

- Hay ME, Taylor PR (1985) Competition between herbivorous fishes and urchins on Caribbean reefs. *Oecologia* 65: 591-598
- Hommersand MH, Guiry MD, Fredericq S, Leister GL (1993) New perspectives in the taxonomy of the Gigartinales (Gigartinales, Rhodophyta). *Hydrobiologia* 260/261:105–20.
- Hughes TP (1994) Catastrophes, phase shifts and large-scale degradation of Caribbean coral reef. *Science* 295:1547-1551
- Hughes TP, Reed DC, Boyle MJ (1987) Herbivory on coral reefs: community structure following mass mortalities of sea urchins. *J Exp Mar Biol Ecol* 133:35-59
- Hurd CL, Stevens CL (1997) Flow visualization around single- and multiple-bladed seaweeds with various morphologies. *J Phycol* 33:360-367
- Jaubert J, Chisholm JRM, Minghelli- Roman A, Marchioretto M, Morrow, JH and Ripley, HT (2003) Re-evaluation of the extent of *Caulerpa taxifolia* development in the northern Mediterranean using airborne spectrographic sensing. *Mar Eco Prog Ser* 263:75-82
- Kitzes JA, Hatta AM (2001) *Caulerpa* In: J.V. Lamour. In: Prud'homme van Reine WF and Trono, Jr. GC (eds), *Plants Resources of South-East Asia* No 15(1). Cryptograms: Algae. Backhuys Publishes, Leiden, The Netherlands. pp 112-116
- Lapointe BE (1997) Nutrient thresholds for bottom-up control of macroalgal blooms on coral reefs in Jamaica and southeast Florida. *Limnol Oceanogr* 42:1119-1131
- Lapointe BE, Barile PJ, Yentsch CS, Littler M.M, Littler DS, Kakuk B (2004) The relative importance of nutrient enrichment and herbivory on macroalgal communities near Normans Pond Cay, Exumas Cays, Bahamas: a natural experiment. *J Exp Mar Biol Ecol* 298: 275-
- Littler, MM, Littler, DS (1984) Models of tropical reef biogenesis: the contribution of algae. *Prog Phycol Res* 3:323– 364
- Lewmanomont K, Ogawa H (1978) Study of the life cycle of *Porphyra* of Thailand. Rep. Fec. Fish., Kasetsart Univ., Bangkok. (In Thai)
- Lewmanomont K, Chittpoolkukul O 1993 Life cycle of *Porphyra vietnamensis* Tanaka & Pham- Hoang Ho from Thailand. *Hydrobiologia* 260/261: 391-400.
- Lewmanomont K, Ogawa, H (1995) *Common Seaweeds and Seagrasses of Thailand*, Integrated Promotion Technology Co.Ltd, Bangkok
- Lewis JR (1964) *The Ecology of Rocky Shores*. English Universities Press, London
- Lewis JP (1968) Water movements and their role in rocky shore ecology. *Sarsia* 34:13–36
- Lindsey Zemke-White W, Ohno M (1999) World seaweed utilisation: an end-of-century summary. *J. Appl. Phycol.* 11(4): 369-376

- Lobban CS and Harrison PJ 1994. Seaweed Ecology and Physiology. Cambridge University Press. Cambridge
- Lüning K 1(1990) Seaweeds. Their Environment, Biogeography and Ecophysiology. Wiley-Interscience, New York
- MacIver BA, West JA (1987) Life history and physiology of the red alga, *Gelidium coulteri* in unialgal culture. Aquaculture 61:281–93
- Martinez EA, Santelices B (1998) Selective mortality on haploid and diploid microscopic stages of *Lessonia nigrescens* Bory (Phaeophyta, Laminariales). J Exp Mar Bio Eco 229: 219-239
- Mayakun J, Prathep A (2005) Seasonal and temporal variations in diversity of macroalgae in Samui island, Thailand. Songklanakarin Journal of Science and Technology. Vol/ 27(spl.3):653-663.
- McCook LJ (1999) Macroalgae, nutrients and phase shifts on coral reef: scientific issues and management consequences of the Great Barrier Reef, a review. Coral Reefs 18: 357-367
- McCook LJ, Jompa J, Diaz-Pulido, G (2001) Competition between corals and algae on coral reefs: a review of evidence and mechanisms, a review. Coral Reefs 19: 400-417
- McDermid KJ, Stuercke B (2003) Nutritional composition of edible Hawaiian seaweeds J Appl Phycol 15(6): 513-524
- Meinesz A, Benichou L, Blachier J, Komatsu, T, Lem e, Molenarr H, Mari X (1995) Variations in the structure, morphology and biomass of *Cualerpa taxifolia* in the Mediterranean Sea. Bot Mar 38: 499-508
- Melo RA, Neushul M (1993) Life history and reproductive potential of the agarophyte *Gelidium robustum* in California. Hydrobiologia 1:1–7
- Menge BA (1976) Organization of the New England rocky intertidal community: role of predation, competition, and environmental heterogeneity. Ecol Monogr 46: 355–393
- Millar AJK, Freshwater DW (2005) Morphology and molecular phylogeny of marine algal order Gelidiales (Rhodophyta) from New South Wales, including Lord Howe and Norfolk Islands. Aus Sys Bot 18:215-263
- Montalva S, Santelices B (1981) Interspecific interference among species of *Gelidium* from Central Chile. J Exp Mar Biol Ecol 53:77–88
- Monterey Bay Aquarium Research Institute (2007) Moss Landing, California.
<http://www.mbari.org/staff/conn/botany/reds/lisa/cult.htm>. Cited 29 Dec 2007.

- Mudge B, Scrosati R (2003) Effects of wave exposure on the proportion of gametophytes and tetrasporophytes of *Mazzaella oregona* (Rhodophyta: Gigartinales) from Pacific Canada. J Mar Biol Ass UK 83: 701–704
- Nelson W, Schwarz AM (2005) Marine biodiversity, Living in the ocean waves: kelp life histories. Wat. Atmos. 13(3): 22-23
- Nodena M, Matricardi G, Vacchi M, Guidetti P (2000) Spreading of *Caulerpa racemosa* (Forsskal) J Agardh (Bryopsidaceae, Chlorophyta) along the coasts of the Ligurian sea. Cryptogamie, Algol 21(3): 301-304
- Norse EA (1993) Global Marine Biological Diversity, A Strategy for Building Conservation into Decision Making, Island Press, Washington, DC, USA.
- Notoya M, Kikuchi N, Mastuo M, Aruga Y, Miura A (1993) Culture studies of four species of *Porphyra* (Rhodophyta) from Japan. Nip. Sui. Gak. 59: 431-436.
- Obeso JR (2002) The costs of reproduction in plants. New Phytol 155:321–348
- Ohba H, Nashima H, Enomoto S (1992) Culture studies on *Caulerpa* (Caulerpales, Chlorophyceae). 3. Reproduction, development, and morphological variation of laboratory cultured *C. racemosa* var. *peltata*. Bot Mag Tokyo 105: 589-600
- Ohno M, Largo DD (1998) The seaweed resources of Japan. In: Critchley AT, Ohno M (eds), Seaweed resources of the world. Japan International Cooperation Agency, Tokosuka, pp 1-14.
- Oliger P, Santelices B (1981) Physiological ecology studies on Chilean Gelidiales. J Exp Mar Biol Ecol 53:65-75
- Olsen JL, Valero M, Meusnier I, Boele-Bos, Stam WT (1998) Mediterranean *Caulerpa taxifolia* and *C. mexicana* are not conspecific. J. Phycol 34:850-856
- Orfanidis S (2001) Culture studies of *Porphyra leucosticta* (Bangiales, Rhodophyta) from the Gulf of Thessaloniki, Greece. Bot Mar 44:533-539.
- Panapitukkul N, Pengnoo A, Siriwong C, Chatupote W (2005) Hydrogeomorphological controls on groundwater quality in the Rattaphum catchment (Songkhla lake basin), Thailand. Water Air Soil Pollut 5:149–163
- Panayotidis P, Zuljevic A (2001) Sexual reproduction of the invasive green alga *Caulerpa racemosa* var. *occidentalis* in the Mediterranean Sea. Oceanologia Acta 24(2):199-203
- Pereira N, Kakode J, Dhargalkar VK (2005) Factors affecting the occurrence of *Porphyra vietnamensis* Tanaka & Pham-Hoang Ho along the Gao coast. Cur Sci 88(3): 492-496
- Piazzi L, Balestri E, Cinelli F (1994) Development and seasonal dynamics of a population of the

- tropical alga *Caulerpa racemosa* (Forssak I) J. Agardh in the Mediterranean.
Cryptogamie, Algol 20:295-300
- Powtongsook S (2000) Utilisation of Algae: A Research and Development Potential in Thailand. Chulalongkorn University Press, Bangkok.
- Prathep A (2002) Population Ecology of an alga forming turf, *Osmundea pinnatifida* from the Isle of Man, British Isles. Ph.D. Thesis The University of Liverpool
- Prathep A Marrs R, Norton TA (2003) Spatial and temporal variations in sediment accumulations in an algal turf and its roles on associated fauna. Marine Biology. 142(2): 381-390.
- Prathep A (2003) Spatial and temporal variations in percentage cover of two common seagrasses at Sirinart National Park, Phuket; and a first step for marine base. Songklanakarin Journal of Science and Technology. 25 (5):651-658
- Prathep A (2005) Spatial and temporal variations in diversity and percentage cover of macroalgae at Sirinart national park, phuket province, Thailand. Science Asia. 31: 225-233.
- Prathep A, Lewmanomont K, Chottithammo A, Tantiprapaj P (2006) Population Dynamics of *Caulerpa racemosa* (Forsskl) J. Agardh., a siphonous green alga, in Shallow Subtidal Reefs, Koh Kham, Songkhla Province, Thailand. Proceedings of 10th International Coral Reefs Symposium: 1870-1876
- Prathep A, Tantiprapaj P (2006) Diversity and community structure of macroalgae before and after the 2004 Tsunami at Talibong Island, Trang Province, Thailand. Coastal Marine Science. 30(1):189-19
- Prathep A, Wichachucherd B, Thongroy P (2007) Spatial and temporal variation in density and thallus morphology of *Turbinaria ornata* in Thailand. Aqua Bot 86:132-138
- Prathep A, Mayakun A, Tantiprapas P, Darakrai A (2008) Can macroalgae recover, 13 months after the 2004 Tsunami?: a case study at Talibong Island, Trang Province, Thailand. J Appl Phycol (accepted).
- Prince of Songkla University (2000) Environment Impact Assessment (EIA) Report on Gas Separation and piping in Songkhla province, Appendix A-H, Prince of Songkhla University, 192 pp. (In Thai)
- Renoncourt L, Meinesz A (2002) Formation of propagules on an invasive strain of *Caulerpa racemosa* (Chlorophyta) in the Mediterranean Sea. Phycologia 41(5): 533-535
- Ruangchuay R, Notoya M (2007) Reproductive strategy and occurrence of gametophytes of Thai Laver *Porphyra vietnamensis* Tanaka et Pham-Hoang Ho (Bangiales, Rhodophyta) from Songkhla Province. Kasetsart J. (Nat. Sci) 41: 143-152

- Rueness J, Fredriksen S (1998) Intraspecific reproductive variation in *Gelidium pusillum* (Stackh.) Le Jol. (Gelidiales, Rhodophyta) from Europe. J Appl Phycol 10: 253–260
- Sahoo D, Tand X, Yarish C (2002) *Porphyra* – the economic seaweed as a new experiment system. Cur. Sci. 83(11) 1313-1316
- Santelices B (1988) Synopsis of biological data on the seaweed genera *Gelidium* and *Pterocladia* (Rhodophyta). FAO Fish Synop 145:1–55
- Santelices B (1990) Patterns of reproduction, dispersal and recruitment in seaweeds. Oceanogr Mar Biol Annu Rev 28:177–276
- Santos R (1994) Frond dynamics of the commercial seaweed *Gelidium sesquipedale*: effects of size and frond history. Mar Ecol Prog Ser 107:295–305
- Santos R (1995) Size structure and inequality in a commercial stand of the seaweed *Gelidium sesquipedale*. Mar Ecol Prog Ser 119: 253–6
- Santos R, Duarte P (1996) Fecundity, spore recruitment and size in *Gelidium sesquipedale* (Gelidiales: Rhodophyta). Hydrobiologia 326/327:223–228
- Santos R, Nyman M (1998) Population modelling of *Gelidium sesquipedale* (Rhodophyta, Gelidiales). J Appl Phycol 10:261–272
- Scrosati R (2001) Population dynamics of *Cualerpa sertularioides* (Chlorophyta: Bryopsidales) from Baja California, Mexico, during El Nino and La Nina years. J Mar Biol Ass U.K. 81: 721-726
- Scrosati R, DeWreede RE (1998) The Impact of frond crowding on frond bleaching in the clonal intertidal alga *Mazzaella cornucopiae* (Rhodophyta, Gigartinaceae) From British Columbia, Canada. J Phycol 34:228-232
- Scrosati R, Garbary DJ, McLachlan J (1994) Reproductive ecology of *Chondrus crispus* (Rhodophyta, Gigartinales) from Nova Scotia, Canada. Bot Mar 37:293–300
- Scrosati R, Mudge B (2004) Effects of elevation, wave exposure, and year gametophytes and tetrasporophytes in *Mazzaella* (Rhodophyta, Gigartinaceae) populations Hydrobiologia 520: 199–205
- Serraño EA, Pearson G, Kautsky L, Brawley SH (1996) Successful external fertilization in turbulent environments. Proc Natl Acad Sci USA 93:5286–5290
- Serviere-Zaragoza E, Scrosati R (2002) Reproductive Phenology of *Pterocladia capillacea* (Gelidiales) from Southern Baja California, Mexico. Pac Sci 56(3):285-290
- Shameel M., Aftab J (1993). Thallus structure, reproduction and antifungal activity of *Porphyra vietnamensis* (Bangiales, Rhodophyta) from Karachi coast. Marine Research, Pakistan 2: 11-16

- Shaughnessy FJ, DeWreede RE, Bell EC (1996) Consequences of morphology and tissue strength to blade survivorship of two closely related Rhodophyta species. *Mar. Ecol. Prog. Ser.* 136: 257-266
- Sosa PA, Jimenez Del Rio M., Garcia- Reina G (1993) Physiological comparison between gametophytes and tetrasporophytes of *Gelidium canarensis* (Gelidiaceae: Rhodophyta). *Hydrobiologia* 260/261:445–449
- Stephenson TA, Stephenson A (1972) *Life between the Tide-Marks on a rocky Shore*. W.H. Freeman and Co., San Francisco
- Sussmann AV, DeWreede RE (2001) Life history of *Acrosiphonia* (Codiolales, Chlorophyta) in Southwestern British Columbia, Canada. *AJB.* 88(9): 1535-1544
- Tanaka T, Ho PH (1962) Notes on some marine alae from Viet-Nam-I. *Mem Fac. Fish. Kagoshima Univ.* 11:24-40
- Taylor WR (1960) *Marine Algae of the Eastern Tropical and Subtropical Coasts of the Americas*. University of Michigan Press, Ann Arbor
- Taylor PR, Hay ME (1984) Functional morphology of intertidal seaweeds: adaptive significance of aggregate vs. solitary forms. *Mar Ecol Prog Ser* 18: 295-302
- Thake B, Herfort L, Randone M, Hill G (2003) Susceptibility of the invasive seaweed *Caulerpa taxifolia* to ionic aluminium. *Bot Mar* 46:17-23
- Thornber CS (2006) Functional properties of the isomorphic biphasic algal life cycle. *ICB.* 46(5): 605-614.
- Thongroy P Liao L, Prathep A (2007) Diversity, abundance and distribution of macroalgae at Sirinart Marine National Park, Phuket Province, Thailand. *Bot Mar* 50(2):88-96
- Tomanek L, Helmunth B (2002) Physiological Ecology of Rocky Intertidal Organisms: A Synergy of Concepts. *Integ Comp Biol* 42:771–775
- Tseng CL (1984) *Common seaweed of China*. Science Press. Qingdao
- Vadas RL, Wright WA, Miller SL (1990) Recruitment of *Ascophyllum nodosum*: wave action as a source of mortality. *Mar Ecol Prog Ser* 61:263–272
- Verlaque M, Boudouresque CF, Meinesz A, Gravez V (2000) The *Caulerpa racemosa* complex (Caulerpales, Ulvophyceae) in the Mediterranean Sea. *Bot Mar* 43:49-68
- Waaland JR, Dickson LG, Duffield ECS (1990) Conchospore production and seasonal occurrence of some *Porphyra* species (Bangiales, Rhodophyta) in Washington State. *Hydrobiologia* 204/205: 453-459
- Zar JH (1984) *Biostatistical Analysis*. Prentice-Hall International, London

Output

1. ผลงานตีพิมพ์ในวารสารทางวิชาการนานาชาติ (ระบุชื่อผู้แต่ง ชื่อเรื่อง ชื่อวารสาร ปี เล่มที่ เลขที่ และหน้า

1.1 Prathep A., Lewmanomont K., Chottithammo A. and Tantiprapaj, P. Population Dynamics of *Caulerpa racemosa* (Forsskl) J. Agardh., a siphonous green alga, in Shallow Subtidal Reefs, Koh Kham, Songkhla Province, Thailand. 2006. Proceedings of 10th International Coral Reefs Symposium: 1870-1876. (ภาคผนวก 1)

1.2 มีการจัดทำ manuscripts 2 เรื่อง และได้ส่งไปวารสาร Journal of Applied Phycology และ Aquatic Botany ตามเอกสารที่แนบมาด้วย (ภาคผนวก 2 และ 3)

2. การนำงานวิจัยไปใช้ประโยชน์

2.1 เชิงสาธารณะ (มีเครือข่ายความร่วมมือ/สร้างกระแสความสนใจในวงกว้าง) เกิดเป็นเครือข่ายความสนใจศึกษาวิจัยสาหร่ายทะเลทั้งในระดับประเทศ และต่างประเทศ ในระดับประเทศเป็นหน่วยวิจัยศึกษาสาหร่ายทะเลในภาคใต้ที่เข้มแข็ง เป็นส่วนหนึ่งของชมรมสาหร่ายและแพลงก์ตอนแห่งประเทศไทย มีการนำเสนอผลงานในที่ประชุมต่าง ๆ ทั้งภายในชมรมสาหร่ายและแพลงก์ตอน และยังมีการนำเสนอผลงานการวิจัยในที่ประชุมทางวิชาการที่เกี่ยวข้องเช่น BRT ในระดับนานาชาติมีเครือข่ายความร่วมมือกับประเทศญี่ปุ่น และประเทศในเอเชียตะวันออกเฉียงใต้ ได้รับเชิญจาก Professor Jeong Ha Kim ของประเทศเกาหลีใต้เพื่อไปนำเสนอผลการศึกษาที่ได้จากโครงการนี้ ได้รับทุนจาก HP Foundation, USA เพื่อให้ไปร่วมเข้าประชุมและนำเสนอผลงานที่ได้จากโครงการ และเป็นฐานในการพัฒนาเครือข่ายความร่วมมืออื่น ๆ อีกมากมาย

2.2 เชิงวิชาการ (มีการพัฒนาการเรียนการสอน/สร้างนักวิจัยใหม่) ผลการศึกษาและองค์ความรู้ที่ได้ถูกนำมาใช้เป็นตัวอย่างในการเรียนการสอน และเป็นฐานในการศึกษาวิจัยต่อมา มีการพัฒนาเป็นหน่วยวิจัยสาหร่ายและหญ้าทะเลขึ้น และในปัจจุบันมีนักศึกษาระดับปริญญาโทที่พัฒนาต่อยอดวิทยวิจัยจากโครงการนี้อยู่ 1 คน และผลการศึกษาที่ได้จากโครงการนี้ยังเป็นฐานองค์ความรู้ให้กับนักศึกษาระดับบัณฑิตศึกษาที่ทำงานวิจัยเกี่ยวกับสาหร่ายทะเล ซึ่งได้สำเร็จการศึกษาไปแล้วรวม 3 คน และยังเป็นฐานสร้างความสนใจให้กับนักศึกษาเพื่อศึกษาและวิจัยต่อในระดับสูงอีกด้วย

3. อื่น ๆ (เช่น ผลงานตีพิมพ์ในวารสารวิชาการในประเทศ การเสนอผลงานในที่ประชุมวิชาการ หนังสือ การจดสิทธิบัตร)

3.1 Diversity, abundance and distribution of macroalgae in Songkhla province, Thailand: What do we have so far? Oral presentation: "The first National Algal and Plankton Symposium" 20th -21st March 2003. Kasetsart University, Bangkok, Thailand.

3.2 Diversity, abundance and distribution of macroalgae in Songkhla province, Thailand. Poster presentation: "TRF conference" 9th -11th January 2004. Kanjanaburi, Thailand

3.3 Diversity, abundance and distribution of macroalgae in Songkhla province, Thailand.

Oral Presentaion: "The first International Symposium on Marine Biodiversity and Conservation Ecology" 16th -23rd February 2004 Department of Biology, Chungnam National University, South Korea.

3.3 Diversity, abundance and distribution of macroalgae in Songkhla Province, Thailand.

Poster Presentation: " 10th International Coral Reef Symposium" 28th June – 2nd July 2004. Okinawa, Japan

3.4 Diversity, abundance and distribution of macroalgae in Songkhla province, Thailand.

Oral presentation: "TRF conference" 14th -16th January 2005. Kanjanaburi, Thailand

3.5 *Porphyra* Ecology from Songkla Province, Thailand. Invited Speaker in " *Porphyra* :

An Economic Macroalga, a potential culture species in Thailand". The Second National Conference on Algae and Plankton, Thailand. 23rd -25th March 2005. Holiday Inn Garden, ChiangMai, Thailand.

3.6 Seasonal Variations in Precentage Cover, Frond Length and Reproductive Cycles of

Gelidium sp. at Suan Song ThaLe, Songkhla Province, Thailand. Oral Presentation. 23th -25th March 2005. Holiday Inn Garden, ChiangMai, Thailand.

Appendix 1

Population Dynamics of *Caulerpa racemosa*, a siphonous green alga, in Shallow Subtidal Reefs, Koh Kham, Songkhla Province, Thailand

Anchana PRATHEP¹, Kanjanapaj LEWMANOMONT², Atchara CHOTITHAMMO³ and Piyalarp TANTIPRAPAJ⁴

^{1,3}Department of Biology, Faculty of Science, Prince of Songkla University, Hat Yai, Songkhla 90112, Thailand.

²Department of Fishery Biology, Faculty of Fisheries, Kasetsart University, Chatuchak, Bangkok, 10900, Thailand.

⁴Marine Ecology Unit, Phuket Marine Biological Station, Ao Makam, Phuket, 83000, Thailand.

¹Corresponding Author: anchana.p@psu.ac.th
Phone: 66-1-542697; Fax: 66-74-212917

Abstract Population dynamics of *Caulerpa racemosa*, a siphonous green alga, were investigated in shallow subtidal reefs in, Koh Kham, Songkhla Province, Thailand. Percentage cover, frond density, mat thickness, biomass and frond morphology were monitored and observed both in the wet and dry seasons between November 2002-December 2003. The study was carried out both on sheltered and exposed sites to study the effects of wave motion on population dynamics and on *Caulerpa* morphological plasticity. The results showed that there were no significant differences in percentage cover, frond density, mat thickness, biomass and fronds morphology of *C. racemosa* among sites, but there were differences between seasons. Population decreased by 50% during April 2003, the hottest month of the year, when temperature and irradiance were highest, particularly in the shallow subtidal zone habitat. This could, therefore, influence the physiological ecology and population abundance of *C. racemosa*. In addition, some fronds were found unhealthy and turned into yellowish color thalli. Surprisingly, the population of these big meadows of *C. racemosa* which covered the area of more than 1,625 m² disappeared in July 2003 and never recovered or recruited. This study reports and discusses the disappearance of *C. racemosa* populations in the tropical waters, which elsewhere are dominant, very successful and classified as an invasive species.

Key words *Caulerpa racemosa*, population, coral reef, macroalgae, sexual reproduction

Introduction

Macroalgae are known to play very important ecological roles in coral reefs community. Since they are primary producers they provide food sources, shelter and nursery grounds for marine organisms. Recently, many reefs have degraded and undergone a phase-shift in which the abundance of corals declined, and abundance of macroalgae increased. This has caused lower biodiversity and tourism appeal (Done, 1992; Hughes, 1994; McCook, 1999). Many studies have investigated this algal phase-shift involving the replacement of corals with macroalgal communities (e.g. Littler & Littler 1984, Done, 1992, Hughes, 1994; Genin et al., 1995; Lapointe, 1997). However, there are fewer studies of coral reef macroalgae at the population level that provide a specific understanding of macroalgal community population dynamics and management of coral reefs.

The distribution and abundance of macroalgae are known to be influenced by various physical and biological factors such as seawater temperature (Scrosati, 2001), nutrient levels (Lapointe et al., 2004) and sedimentation (Airoldi et al., 1996; Airoldi, 1998). Fishes and sea urchin are known to regulate the macroalgae population within the reefs (Hay and Taylor, 1985; Hughes et al., 1987). Various biological competitions between coral and algae are well studied and known to influence the outcome of reef community (see review: McCook et al., 2001). Although, the Indo-Pacific region is known to have a high rich diversity of coral reefs, very little is known of coral reef macroalgal population dynamics in the tropical region of Thailand or South East Asia.

Caulerpa spp. are siphonous green algae. They are common and ubiquitous and ecological important features of many tropical marine environments, including coral reefs, lagoons and seagrass beds (Clifton and Clifton, 1999; Collado-Vides and Robledo, 1999; Scrosati, 2001; Collado-Vides, 2002). They are widely distributed throughout tropical and subtropical seas (Taylor, 1960; Lüning, 1990). They have recently become subjected to considerable study as a result of species expansions of their ranges into more temperate environments and have become very successful invasive species in the Mediterranean sea (Piazzi et al., 1994; Olsen et al., 1998; Aussem and Hill, 2000; Benzie et al., 2000; Nodena et al., 2000; Ceccherelli et al., 2002; Fam et al., 2002; Renoncourt and Meinesz, 2002; Jaubert et al., 2003; Thake et al., 2003).

Despite its uni-cellularity, the *Caulerpa* plant shows a complex external morphology, differentiated into creeping stolon, rhizophores with rhizoid clusters, and erect assimilators. The assimilators usually bear numerous branchlets termed ramuli and showed highly species specific variability. The morphological variations (plasticity) of *Caulerpa* species seem to be related to substrate, light intensity, water exposure, currents, depth, seasons and grazing pressure (Calvert, 1976; Ohba et al., 1992; Carruthers et al., 1993; Gacia et al., 1996; Verlaque et al., 2000; de Senerpont Domis et al., 2003). This morphology variability could influence growth form, photosynthetic ability and ultimately, population dynamics of *Caulerpa* (Collado-Vides and Robledo, 1999; Collado-Vides, 2002).

Here we report: 1) the population dynamics of *Caulerpa racemosa* (Forsskål) J. Agardh., a common coral macroalga in shallow subtidal reefs and 2) the morphological plasticity of *C. racemosa* at different degrees of wave motion and seasons.

Materials and Methods

The population of *C. racemosa* studied are from the shallow subtidal reefs, 1-2 meters depth, at Koh Kham, Songkhla province, Southern Thailand (6° 71'N, 100° 20'E). The main oceananographic characteristics and the dynamics of the coral reef community of Koh Kham were reported in EIA study on gas separation and piping in Songkhla province (Prince of Songkla University, 2000), but macroalgae populations were not studied. Koh Kham is located on the Gulf of Thailand, nearly 2 kilometers from the coast, with little human activity in proximity to the study sites. Preliminary studies on diversity, distribution and abundance of macroalgae in Songkhla province, Thailand, were carried out during August 2002, which showed high abundance and many big thick meadows of *C. racemosa* at the site. *C. racemosa* grows together

with corals and other algae on sandy, sea shells and rocky substrates near the coral reef flat.

To study the effect of wave motion on the population and morphological plasticity, *C. racemosa* was observed at two sites: on exposed and sheltered sites. The exposed site was on the northern coast of the Koh Kham, which directly opens to the sea. The sheltered site was on the western coast of Koh Kham, where lies parallel to the shore. Also, coral forms were used as biological indicators to measure the degrees of wave exposure. On the exposed site, the higher percentage cover of massive coral such as *Platygyra* sp., *Porites lutea* Milne-Edwards and Haime, 1860 and *Goniastrea pectinata* (Ehrenberg, 1834) were dominant, while foliose coral such as *Turbinaria peltata* (Esper, 1794) had greater percentage cover on the sheltered site.

Percentage cover, frond density, mat thickness and biomass (dry weight) of *C. racemosa* were determined at 3 months intervals from November 2002 to November 2003. Samples were monitored and recorded 4 times within the wet and dry seasons in Southern Thailand. The wet season is predominated by the SW monsoon and a dry season predominated by NE monsoon. Snorkeling and SCUBA techniques were used for data and sampling collection. The wet season study was conducted during 16-17 November 2002 and 19-20 July 2003, and the dry season study during 15-16 February 2003 and 19-20 April 2003. Additional observations of *C. racemosa* population were made on 18 August 2003, 15 November 2003, 13 December 2003 and 27 August 2004. On each sampling dates, five 50 cm X 50 cm quadrats were utilized to randomly sample macroalgal communities at each site. Percentage cover and substrates of macroalgae were estimated visually and recorded at both sites. To investigate frond density, twenty-four 5 cm X 5 cm quadrats were sampled randomly at each site, a thin wooden rod was inserted into the *C. racemosa* mat to measure the mat thickness of the *C. racemosa* meadows at each site with a total of 25 replications. To study *C. racemosa* morphology and biomass, five 50 cm X 50 cm quadrats were randomly sampled at each site across the *C. racemosa* bed. All algal specimens were collected by scraping and then placed into plastic bags. They were placed in dark and cool conditions, immediately brought back to the laboratory and processed. *C. racemosa* thalli were washed; epiphytes and other benthic organisms were removed. Fronds were closely observed and dried at 60°C to constant weight. A few samples were preserved and voucher specimens were deposited at PSU herbarium, Thailand.

Statistical analysis

Two-way ANOVA was employed to test percentage cover, frond density, mat thickness and biomass against different sites and seasons. Multiple comparisons were tested when there were significant differences between treatments, following Zar (1984). Cochran's C- test was used before each analysis, to test whether variances were homogeneous and data transformations were applied when necessary. Friedman's ANOVA was employed where homogeneity of the data set was not achieved after transformations. Tukey multiple comparison was employed to test the differences between sites and seasons. Statistical results were presented based on the transformed analyses, but for clarity graphical output was based on the untransformed means.

Results

Percentage cover, frond density, biomass and mat thickness of *C. racemosa* varied among sites and seasons. Slightly greater percentage cover of *C. racemosa* occurred on the sheltered site compared to the exposed site, with significant differences among months ($\chi^2 = 27.11$; $df = 7$, $N = 5$, $P < 0.001$; Fig. 1). *C. racemosa* was very abundant at the site, the maximum percentage cover of *C. racemosa* was found on the sheltered shore during late rainy season and early wet season, around 80% of percentage cover at both sites. Subsequently, in the dry season the percentage cover of *C. racemosa* dropped to 50% when some unhealthy, yellowish fronds were observed. Surprisingly, disappearance of *C. racemosa* occurred in July, 2003. Also, there was no recovery or recruitment of *C. racemosa* population upon revisiting the site in August 2003, November 2003 and December 2003 and August 2004.

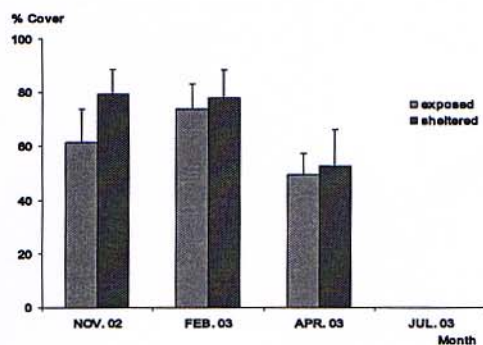


Fig. 1. Percentage cover of *C. racemosa* at different sites and seasons

Similar patterns were found in *C. racemosa* frond density. There was slightly greater frond density on the sheltered than on the exposed sites, with significant differences among months ($\chi^2 = 107.71$; $df = 7$, $N = 24$, $P < 0.001$; Fig. 2). *C. racemosa* patches contained very dense greenish fronds. The maximum densest fronds were found at the sheltered site during late rainy season and at the early wet season, 1.75 fronds/cm² in November 2002 and 1.85 fronds/cm² in February 2003 respectively. It was worthwhile to note that there were some *C. racemosa* patches washed up on the shore both on the sheltered and exposed sites. Frond density dropped by 50% in dry season with more *C. racemosa*

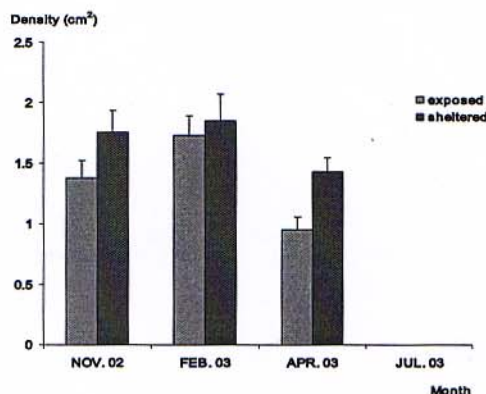


Fig. 2 Density of *C. racemosa* at different sites and seasons

In contrast, *C. racemosa* biomass was significantly greater during the dry seasons. Three hundred percent higher biomass was present in the dry season (April 2003), as compared to the wet season (November 2002) ($F_{(3,14)} = 21.44$, $P < 0.0001$; Fig. 3), but there was no significant differences between different exposures ($F_{(1,14)} = 1.10$, $P = 0.31$). Due to the very strong wave action, *C. racemosa* stand could not be collected on the exposed site, thus no data was presented for the February, 2003 sampling event.

Similar patterns were found for the mat thickness of *C. racemosa*. There were significant differences in mat thickness among months ($F_{(1,24)} = 271.96$, $P < 0.01$; Fig. 4). The thickness of *C. racemosa* mat was increased almost 300% in the early dry season compared to those in the wet season, however they became thinner in the middle of the dry season and no differences were found among sites ($F_{(1,192)} = 0.20$, $P = 0.65$).

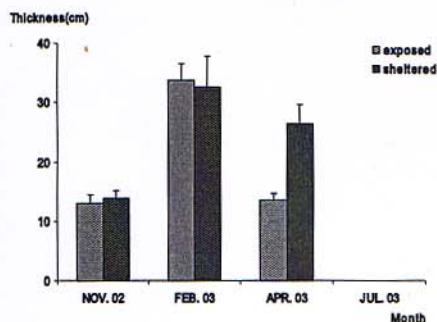


Fig. 3. Mat thickness of *C. racemosa* at different sites and seasons

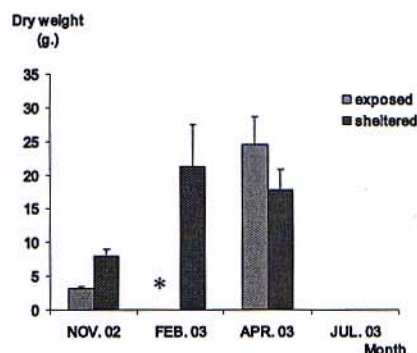


Fig. 4. Biomass of *C. racemosa* at different sites and seasons. *: Samples can not be collected because of strong wave

In addition, close observation on *C. racemosa* fronds showed no differences in frond morphology among sites and seasons. Similar shapes and size of ramuli were found at both sites. Also, *C. racemosa* fronds underneath the canopy were observed to be bigger and greener than those on the upper part of the patches during February and April 2003.

Discussion

Many studies have shown that there is significant morphological plasticity of *C. racemosa* due to various physical factors such as temperature, light, salinity and wave motions (Calvert, 1976; Ohba et al., 1992; Carruthers et al., 1993; Gacia et al., 1996; Verlaque et al., 2000; de Senerpont Domis et al., 2003). Surprising, this study showed no differences in percentage cover, frond density, mat thickness, biomass and frond morphology of *C. racemosa* between exposed and sheltered sites. The large meadows of *C. racemosa*, dense compact stolons and fronds are similar to those known to form turf-forming communities in coral reef habitats. The turf-forming algae are known to be an adaptation against herbivory and desiccation (Hay, 1981) and against excessive irradiance which may

cause bleaching in many algae (Hay, 1986; Beach and Smith, 1996 a, b). It is also known to reduce water velocities over the individual fronds (Hurd and Stevens, 1997). Thus, there might have been very little influence in such physical factors over *C. racemosa* turfs at both sites, hence similar patterns of *C. racemosa* population were found.

Temporal variations in percentage cover, frond density, mat thickness and biomass were found in the big thick mats of *C. racemosa*, that once covered areas of more than 1,625 m². Populations sharply declined by 50% in April, the middle of dry season. Also, *C. racemosa* fronds underneath the canopy were observed to be bigger and greener than those on the upper part of the patches. Greater exposure to high light could cause bleaching and die off in some other marine algae (Beach and Smith 1997; Scrosati and DeWreede, 1998). Thus, greater exposure to high light in February and April of *C. racemosa* may have caused yellowish unhealthy fronds and later died-off.

Although, seawater temperature of tropical sea is relatively constant (Scrosati, 2001), *C. racemosa* population inhabited at the shallow subtidal with only 1-2 meters depth and may be influenced by an increase of in seawater temperature and greater irradiance in the dry season when the tide was out. The long term monitoring data set of 12 years showed that February has the minimum rainfall and April was the month with the warmest air temperature at over 30 °C (Prince of Songkla University, 2000), such condition during dry season may have caused the 50% dropped of *C. racemosa* population as shown in the results. The decline of *C. racemosa* populations reported here, therefore, may be a result of a combination of an increased seawater temperature and greater irradiance.

Surprisingly, the *C. racemosa* population disappeared in July 2003 at the beginning of wet season. Although, there was already a record of population dropping in previous sampling, it seemed unlikely to result in the disappearance of such massive populations of *C. racemosa* unless biomass removal was alternatively the result of a typhoon or an endemic pathogen. However, there was no any catastrophic tropical weather event reported during this period. Incidentally, no changes in other marine algae and fauna were noticed at the site. In addition, *Caulerpa* spp. are known to contain secondary compounds such as caulerpin, caulerpicin and caulerpenyne, which are known to deter fishes and other potential marine predators (Hatta, 2001). These toxins help to maintain and make *Caulerpa* population stable and are very successful in favorable conditions in the Mediterranean Sea (Meinesz et al., 1995; Ceccherelli and Cinelli,

1999). Our observations did not indicate the presence of grazing activity.

Some studies have shown population *Caulerpa* decline and died-off after releasing gametes both in the field (Clifton, 1997; Clifton and Clifton, 1999) and in laboratory (Panayotidis and Zuljevic, 2001; de Senerpont Domis et al., 2003). In the field, *C. racemosa* was found releasing their gametes in the early morning after sunrise, however which environmental or biological factors triggering the onset of the sexual reproduction remain unknown (Clifton, 1997). When the conditions become favorable for sexual reproduction, fronds became fertile within 12 hours and it would take only short period of time for gametes releasing. As a result, *Caulerpa* population may disappear in a very short period of time; as short as 3 hours depending on wave motion and currents (Clifton and Clifton, 1999).

The disappearance of such an expansive population of *C. racemosa* in the same period of time is suggestive of sexual reproduction and resulting decline of the population in this study. *Caulerpa* have been classified as a clonal organism (Collado-Vides, 2002) due to their siphonous fronds connection, thus the population may be influenced by the effects of an environmental conditions throughout the clonal mat (de Kroon and Schieving, 1990). They also could have the same set of genetic materials as they could reproduce and increase their population size by asexual reproduction or fragmentation, which already has reported to have resulted in successful population increases in the Mediterranean sea (Panayotidis and Zuljevic, 2001). Therefore, the populations of *Caulerpa* at Koh Kham likely originated from the same parents cell with similar ages, resulting in simultaneous fertility, gamete release, and die-off during the same period of time.

Recruitment and recovering of new population of *C. racemosa* should be found within a few months after sexual reproduction (Clifton and Clifton, 1999). However, after revisiting at the study sites several times for over a year after the disappearance of *C. racemosa*, there has been no recruitment and recovery of *C. racemosa* population. There were only a few patches of small *C. racemosa* observed in the rock cracks or coral crevices. The unsuccessful recruitment of sexually produced gametes of *C. racemosa* in the early rainy season, may have been a result of greater wave motion, as increasing wave motion would dilute gametes and decrease fertilization success (Gordon and Brawley, 2004). The vegetative reproduction and fragmentation, therefore, might be an adaptation of this

tropical green alga to maintain its population.

This study was the first to report population dynamics and the disappearance of *C. racemosa* in the tropical shallow subtidal reef in Southeast Asia and Thailand. The incidence of sexual reproduction in this invasive species is still poorly known, thus further studies on what triggers the onset of sexual reproduction would be very useful. Also, this information would be very useful for understanding the population dynamics of this genus of highly invasive macroalgae.

Acknowledgements

This study was funded by Thailand Research Fund (Grant No. TRG4580041) to AP under postdoctoral research program. Special thanks to all the staff in the Seaweeds and Segrasses group, CBIPT, Prince of Songkla University, Thailand; thanks also to the Department of Biology, Faculty of Science, PSU for all the facilities and supports. AP is very much grateful for the EIA report, other useful information and help from Mr. Sakanan Plathong and Mr. Supasit Boonpeanphol, and Professor Larry Liddle for comments and help with this manuscript.

References

- Airolidi L, Fabiano M and Cinelli F (1996) Sediment deposition and movement over a turf assemblage in a shallow rocky coastal area of the Ligurian Sea. *Mar Ecol Prog Ser* 133: 241-251
- Airolidi L (1998) Roles of disturbance, sediment and substratum retention on spatial dominance in algal turf. *Ecology* 79: 2759-2770
- Aussem A, Hill D (2000) Neural-network metamodelling for the prediction of *Caulerpa taxifolia* development in the Mediterranean sea. *Neurocomputing* 30: 71-78
- Beach KS, Smith CM (1996a) Ecophysiology of tropical rhodophytes I: microscale acclimation in pigmentation. *J Phycol* 32: 701-709
- Beach KS, Smith CM (1996b) Ecophysiology of tropical rhodophytes II: microscale acclimation in photosynthesis. *J Phycol* 32: 710-718
- Beach KS, Smith CM (1997) Ecophysiology of a tropical rhodophyte III: recovery from emersion stresses in *Ahnfeltiopsis concinna* (J. Ag.) Silva et DeCew. *J Exp Mar Biol Ecol* 211: 151-167
- Benzie JA, Ballment E, Chisholm JRM, Jaubert JM (2000) Genetic variation of green alga *Caulerpa taxifolia*. *Aquat Bot* 66: 131-139
- Calvert H (1976) Culture studies on some Florida species of *Caulerpa*: morphological responses to reduced illumination. *Br Phycol J* 11: 203-214

- Carruthers TJB, Walker DI, Huisman JM (1993) Culture studies on two morphological types of *Caulerpa* (Chlorophyta) from Perth, Western Australia, with a description of a new species. *Bot Mar* 36: 589-596
- Ceccherelli G, Cinelli F. (1999) The role of vegetative fragmentation in dispersal of the invasive alga *Caulerpa taxifolia* in the Mediterranean. *Mar Eco Prog Ser* 182: 299-303
- Ceccherelli G, Piazza L, Balata D. (2002) Spread of introduced *Caulerpa* species in macroalgal habitats. *J Exp Mar Biol Ecol* 280:1-11
- Clifton KE (1997) Mass spawning by green algae on coral reefs. *Science* 275:116-118
- Clifton KE, Clifton LM (1999) The phenology of sexual reproduction by green algae (Bryopsiales) on Caribbean coral reefs. *J Phycol* 35: 24-34
- Collado-Vides L, Robledo D (1999) Morphology and photosynthesis of *Caulerpa* (Chlorophyta) in relation to growth form. *J Phycol* 35: 325-330
- Collado-Vides L (2002) Morphological Plasticity of *Caulerpa prolifera* (Caulerpales, Chlorophyta) in relation to growth form in a coral reef lagoon. *Bot Mar* 45: 123-129
- de Kroon H, Schieving F (1990) Resource partitioning in relation to clonal growth strategy. In: van Groenendaal J, de Kroon H (eds) *Clonal growth in plants: regulation and function*. SPB Academic Publishing, The Hague, pp 113-130
- de Senerpont Domis LN, Fam P, Bartlett, AJ, Prudhomme van Reine WF, Espinosa CA, Trono Jr. GC (2003) Defining taxon boundaries in members of the morphologically and genetically plastic genus *Caulerpa* (Caulerpales, Chlorophyta) *J Phycol* 39: 1019-1037
- Done TJ (1992) Phase shifts in coral reef communities and their ecological significance. *Hydrobiologia* 47:121-132
- Famà P, Wysor B, Kooistra WHCF, Zuccarello GC (2002) Molecular phylogeny of the genus *Caulerpa* (Caulerpales, Chlorophyta) inferred from Chloroplast *tufA* gene. *J Phycol* 38: 1040-1050
- Gacia E, Littler, MM, Littler, DS (1996) The relationships between morphology and photosynthetic parameters within the polymorphic genus *Caulerpa*. *J Exp Mar Biol Ecol* 204: 209-224
- Genin A, Lazar B, Brenner S (1995) Vertical mixing and coral death in the Red Sea following the eruption of Mount Pinatubo. *Nature* 377: 507-510
- Gordon R, Brawley SH (2004) Effects of water motion on propagule release from algae with complex life histories. *Mar Biol* 145: 21-29
- Hatta AM (2001) *Caulerpa* J.V. Lamour. In: Prud'homme van Reine WF and Trono, Jr. GC (eds), *Plants Resources of South-East Asia No 15(1). Cryptograms: Algae*. Backhuys Publishes, Leiden, The Netherlands. pp. 112-116
- Hay ME (1981) The functional morphology of turf-forming seaweeds: persistence in stressful marine habitats. *Ecology* 62: 739-750
- Hay ME (1986) Functional geometry of seaweeds; ecological consequences of thallus layering and shape in contrasting light environments. In: Givnis TJ (ed) *On the economy of plant form and function*. Cambridge University Press, Cambridge, pp 635-666
- Hay ME, Taylor PR (1985) Competition between herbivorous fishes and urchin on Caribbean reefs. *Oecologia* 65: 591-598
- Hughes TP (1994) Catastrophes, phase shifts and large-scale degradation of Caribbean coral reef. *Science* 295: 1547-1551
- Hughes TP, Reed DC, Boyle M-J (1987) Herbivory on coral reefs: community structure following mass mortalities of sea urchins. *J Exp Mar Biol Ecol* 133:35-59
- Hurd CL, Stevens CL (1997) Flow visualization around single- and multiple-bladed seaweeds with various morphologies. *J Phycol* 33: 360-367
- Jaubert J, Chisholm JRM, Minghelli- Roman A, Marchioretti M, Morrow, JH, Ripley, HT(2003) Re-evaluation of the extent of *Caulerpa taxifolia* development in the northern Mediterranean using airborne spectrographic sensing. *Mar Eco Prog Ser* 263: 75-82
- Lapointe BE (1997) Nutrient thresholds for bottom-up control of macroalgae blooms on coral reefs in Jamaica and southeast Florida. *Limnol Oceanogr* 42: 1119-1131
- Lapointe BE, Barile PJ, Yentsch CS, Littler M.M, Littler DS, Kakuk B (2004) The relative importance of nutrient enrichment and herbivory on macroalgal communities near Normans Pond Cay, Exumas Cays, Bahamas: a natural experiment. *J Exp Mar Biol Ecol* 298: 275-285
- Littler, MM, Littler, DS (1984) Models of tropical reef biogenesis: the contribution of algae. *Prog. Phycol. Res.* 3, 323- 364
- Lüning K (1990) *Seaweeds. Their Environment, Biogeography and Ecophysiology*. Wiley-Interscience, New York. 527 pp
- McCook LJ (1999) Macroalgae, nutrients and phase shifts on coral reef: scientific issues and management consequences of the Great Barrier Reef, a review. *Coral Reefs* 18: 357-367
- McCook LJ, Jompa J, Diaz-Pulido, G (2001) Competition between corals and algae on coral reefs: a review of evidence and mechanisms, a review. *Coral Reefs* 19: 400-417

- Meinesz A, Benichou L, Blachier J, Komatsu, T, Leme, Molenarr H, Mari X (1995) Variations in the structure, morphology and biomass of *Cualerpa taxifolia* in the Mediterranean Sea. *Bot Mar* 38: 499-508
- Nodena M, Matricardi G, Vacchi M, Guidetti P (2000) Spreading of *Caulerpa racemosa* (Forsskål) J Agardh (Bryopsidaceae, Chlorophyta) along the coasts of the Ligurian sea. *Cryptogamie, Algol* 21(3): 301-304
- Ohba H, Nashima H, Enomoto S (1992) Culture studies on *Caulerpa* (Caulerpales, Chlorophyceae). 3. Reproduction, development, and morphological variation of laboratory cultured *C. racemosa* var. *peltata*. *Bot Mag Tokyo* 105: 589-600
- Olsen JL, Valero M, Meusnier I, Boele-Bos, Stam WT (1998) Mediterranean *Caulerpa taxifolia* and *C. mexicana* are not conspecific. *J. Phycol* 34: 850-856
- Panayotidis P, Zuljevic A (2001) Sexual reproduction of the invasive green alga *Caulerpa racemosa* var. *occidentalis* in the Mediterranean Sea. *Oceanologia Acta* 24(2): 199-203
- Piazzi L, Balestri E, Cinelli F (1994) Development and seasonal dynamics of a population of the tropical alga *Caulerpa racemosa* (Forsskål) J. Agardh in the Mediterranean. *Cryptogamie, Algol* 20: 295-300
- Prince of Songkla University (2000) Environment Impact Assessment (EIA) Report on Gas Separation and piping in Songkhla province, Appendix A-H, Prince of Songkhla University, 192 pp.
- Renoncourt L, Meinesz A (2002) Formation of propagules on an invasive strain of *Caulerpa racemosa* (Chlorophyta) in the Mediterranean Sea. *Phycologia* 41(5): 533-535
- Scrosati R (2001) Population dynamics of *Cualerpa sertularioides* (Chlorophyta: Bryopsidales) from Baja California, Mexico, during El Nino and La Nina years. *J Mar Biol Ass U.K.* 81: 721-726
- Scrosati R, DeWreede RE (1998) The impact of frond crowding on frond bleaching in the clonal intertidal alga *Mazzaella cornucopiae* (Rhodophyta, Gorgonaceae) from British Columbia, Canada. *J Phycol* 34: 228-232
- Taylor WR (1960) *Marine Algae of the Eastern Tropical and Subtropical Coasts of the Americas*. University of Michigan Press, Ann Arbor, 870 pp.
- Thake B, Herfort L, Randone M, Hill G (2003) Susceptibility of the invasive seaweed *Caulerpa taxifolia* to ionic aluminium. *Bot Mar* 46: 17-23
- Verlaque M, Boudouresque CF, Meinesz A, Gravez V (2000) The *Caulerpa racemosa* complex (Caulerpales, Ulvophyceae) in the Mediterranean Sea. *Bot Mar* 43: 49-68
- Zar JH (1984) *Biostatistical Analysis* 2nd edition. Prentice-Hall, Inc., Englewood Cliffs, New Jersey, 718 pp.

Appendix 2

Editorial Manager(tm) for Journal of Applied Phycology
Manuscript Draft

Manuscript Number:

Title: A comparison of the growth form of *Porphyra vietnamensis* Tanaka et Pham-Hoang Ho between sheltered and exposed shores in Songkhla province, Thailand

Article Type: Original Research

Section/Category:

Keywords: *Porphyra vietnamensis*; growth; morphological variation; wave action

Corresponding Author: Assistance Professor Anchana Prathep, Ph.D.

Corresponding Author's Institution: Prince of Songkla University

First Author: Sutinee Sinutok , Msc

Order of Authors: Sutinee Sinutok , Msc; Anchana Prathep, Ph.D.

Manuscript Region of Origin:

Abstract: The growth form of the red alga, *Porphyra vietnamensis* Tanaka et Pham- Hoang Ho, was investigated to answer the following questions: Are there variations in length, width, biomass and shape of *P. vietnamensis* between sheltered and exposed habitats? And, if so, what physical and chemical factors such as wave action, nutrients, salinity, and temperature influence such differences? The *Porphyra* populations from Suansongtalay (sheltered) and Kaoseng (exposed) in Songkhla Province, Thailand were monitored for 2 years from December 2002 to February 2004. Length (mm), width (mm) and dry weight (mg) of *P. vietnamensis* varied between the sites ($P < 0.05$). Similar patterns in length, width and biomass were found in both years. The highest dry weight, 37.5 ± 2.1 mg, was found in February 2003 at the sheltered habitat and in January 2004, 37.3 ± 3.9 mg, at exposed site. The lowest, 3.2 ± 0.4 mg, was found in November 2003, at the sheltered site. The shape varied with respect to the degrees of exposure. The narrower and thinner blades were found at the sheltered site, while the shorter and wider blades were found at the exposed habitat.

There is evidence that splashing waves could remediate the effects of exposure on the establishment of *Porphyra* populations.

A comparison of the growth form of *Porphyra vietnamensis*
Tanaka et Pham-Hoang Ho between sheltered and exposed shores
in Songkhla province, Thailand

Sutinee Sinutok and Anchana Prathep*

Seaweed and Seagrass Research Unit,
Centre for Excellence in Biodiversity of Peninsular Thailand,
Department of Biology,
Faculty of Science,
Prince of Songkla University,
Songkhla 90112
THAILAND

Tel:66-81-542-6977
FAX:66-74-212-917
E-mail:anchana.p@psu.ac.th

Abstract

The growth form of the red alga, *Porphyra vietnamensis* Tanaka et Pham- Hoang Ho, was investigated to answer the following questions: Are there variations in length, width, biomass and shape of *P. vietnamensis* between sheltered and exposed habitats? And, if so, what physical and chemical factors such as wave action, nutrients, salinity, and temperature influence such differences? The *Porphyra* populations from Suansongtalay (sheltered) and Kaoseng (exposed) in Songkhla Province, Thailand were monitored for 2 years from December 2002 to February 2004. Length (mm), width (mm) and dry weight (mg) of *P. vietnamensis* varied between the sites ($P < 0.05$). Similar patterns in length, width and biomass were found in both years. The highest dry weight, 37.5 ± 2.1 mg, was found in February 2003 at the sheltered habitat and in January 2004, 37.3 ± 3.9 mg, at exposed site. The lowest, 3.2 ± 0.4 mg, was found in November 2003, at the sheltered site. The shape varied with respect to the degrees of exposure. The narrower and thinner blades were found at the sheltered site, while the shorter and wider blades were found at the exposed habitat. There is evidence that splashing waves could remediate the effects of exposure on the establishment of *Porphyra* populations.

Key words: *Porphyra vietnamensis*, growth, morphological variation, wave action

Introduction

The red alga genus, *Porphyra*, popularly known as ‘Nori’ in Japan, ‘Kim’ in Korea and ‘Zicai’ in China, is an important economic seaweed because it is used as food. It contains high levels of protein (16.5% compared to 5.6% in *Gracilaria salicornia*, another common seaweed used as food); vitamins (430 IU g⁻¹ d.wt beta-carotene compared with 15 IU g⁻¹ d.wt in *G. salicornia*; higher vitamin C content than in oranges); trace minerals and dietary fibers (Noda, 1993; McDermid and Stuercke, 2003). Because of its economic importance and health benefits, *Porphyra* has been cultivated on a large scale in many countries such as Japan, Korea, and China.. In 1999, the combined production of *Porphyra* from these three countries was over 1,000,000 wet tonnes (FAO, 2003). *Porphyra* in Japan is a US\$ 1.5 billion per year business (Ohno and Largo, 1998), at US\$ 25 kg⁻¹ (Lindsey Zemke-White and Ohno, 1999). Nearly 133 species of *Porphyra* have been reported worldwide (Sahoo et al., 2002) although only a few are cultivated commercially.

Porphyra vietnamensis Tanaka et Pham- Hoang Ho, one of the edible tropical seaweeds, is found on rocks in the upper littoral zone along the coasts of Northwest Pacific in Vietnam (Tanaka and Ho, 1962), China (Tseng, 1984) and Thailand (Lewmanomont and Ogawa, 1978) and also on the Indian Ocean coasts of India and Pakistan (Dhargalkar et al., 1981; Dinabandhu et al., 2007; Shameel and Aftab 1993). In Thailand, the algae are found along the coasts of Songkhla province (Ruangchuay and Notoya, 2003), Pattani and Narathiwat province (Lewmanomont and Chittpoolkusol, 1993). Many aspects of the life cycle and physiological responses of gametophytes and sporophytes (the conchocelis phase) of *P. vietnamensis* has been investigated (Lewmanomont and Chittpoolkusol, 1993; Ruangchuay and Notoya, 2003). However, little is known about its ecology. Such understanding would be useful and necessary for development of a mariculture program for *P. vietnamensis*.

Photoperiod, temperature, irradiance, salinity, and nutrients (nitrates and phosphates) are known to influence growth and reproduction of most species of *Porphyra* (Bird et al., 1972; Avila et al., 1986; Waaland et al., 1990; Notoya et al., 1993; Conitz et al., 2001; Orfanidis, 2001; Pereira et al.,

2005). In *P. vietnamensis*, photoperiod and light intensity, however, are not the most important factors in controlling the life cycle but temperature and salinity are (Lewmanomont and Chittpoolkusol, 1993). Wave action is a crucial factor in the distribution and abundance of all intertidal organisms (Denny, 1995; Shaughnessy et al., 1996; Carrington, 2002). Moreover, it is known to limit the size of nearshore plants (Denny, 1999). Flexible organisms, like macroalgae, often experience lower drag than rigid organisms because their shape and size change as the velocity increases (Boller and Carrington, 2006). In calm water, the fronds can reach larger sizes than in extreme water velocity (Denny and Wethey, 2000; Boller and Carrington, 2006).

In this study we explored the following questions: 1. Are variations in length, width, biomass and shape of *P. vietnamensis* correlated with sheltered (Suansongtalay) and exposed (Kaoseng) habitats? 2. If so, what physical and chemical factors, such as wave exposure, nutrients, salinity, and temperature, influence such differences?

Materials and Methods

Porphyra vietnamensis grows on rocks in the upper littoral zone exposed to strong wave action. It seems to grow best fully exposed, moistened by the spray of the waves. The gametophyte blade of *P. vietnamensis*, appears in the months of November to February during the monsoon season.

During this period water temperature decreases from 27-30°C to 24-27°C, salinity from 31-33‰ to 18-26‰ sometimes to 11‰. The light period in Songkhla during October to February is close to 12 hours, about 2-18 minutes shorter than the rest of the year. Photoperiod, therefore, does not vary much for the whole year in Songkhla province, Thailand (Lewmanomont and Chittpoolkusol, 1993). The sporophyte of *P. vietnamensis* appears on shells in the months of March to October during the dry season (Lewmanomont and Ogawa, 1978).

Suansongthalay (7°13'48''N, 100°34'48''E) and Kaoseng (7°10'57''N, 100°37'22''E), Songkhla province, Southern Thailand were selected for this study due to the abundance of *P. vietnamensis* during the November to March period, which is a rainy season in the Gulf of Thailand (Fig. 1). The temperature and salinity ranges dropped from 28-31 °C and 8.17-30 ‰ respective. At Kaoseng, the

site is exposed, facing toward the ocean and has a splash zone while at Suansongtalay, the site is sheltered by breakwater. The water velocity was measured at high tide in May, using MINI Current Meter model SD-6000 (Sensordata, Norway).

The *P. vietnamensis* populations were monitored for 2 years from December 2002 to February 2004. Fifty gametophyte thalli were collected randomly from both sites on 15 December 2002, 5 February 2003, 22 November 2003, 17 January and 29 February 2004. A total of five hundred thalli were gently removed and preserved in 4% seawater formalin for measurement in the laboratory. Length (mm) width (mm) and dry weight (mg) of each thallus were measured using the electronic caliper PD-151 (Pro'sKit, Taiwan) and electronic balance JP-3000 W (Chyo, Japan), respectively. Physical parameters such as salinity and temperature were recorded at each site. Phosphates and nitrates were provided by NICA (National Institute of Coastal Aquaculture), Songkhla. Wind speed and direction data were provided by Thai Meteorological Department.

Statistical analysis

Analysis of variance (ANOVA) was employed to test the effect of sites and times of collection on length, width and dry weight of *Porphyra*, PO_4 , NO_3 , seawater temperature and salinity. If necessary, data were transformed to meet the assumptions of the parametric test. Multiple comparisons were made following Zar (1984). Statistical results were presented based on the transformed analyses, but for clarity graphical output was based on the untransformed means. SPSS Version 15.0 was used for all analyses.

Results

Physical parameters

There were no significant differences in water temperature, salinity, nitrates and phosphates between the two sites ($P>0.05$). The average water temperature, salinity, nitrates and phosphates at both sites were 29.83 ± 0.33 °C, 26.71 ± 2.11 ‰, 0.0668 ± 0.0107 mg/l, and 0.0145 ± 0.0022 mg/l, respectively. Linear regressions of all parameters showed that there was no relationship between these factors on length, width, and dry weight of *P. vietnamensis* (Table 1). However, the average

water motion at the exposed shore was higher than at the sheltered shore. Water splashing was also greater. The water velocity at Kaoseng was 3 times greater than at Suansongtalay, $0.106 \pm 0.016 \text{ ms}^{-1}$ and $0.034 \pm 0.007 \text{ ms}^{-1}$, respectively. In addition, greater wave motion and water velocity are expected during the monsoon season and is on average 3.98 knots, compared to only 1.98 knots in dry season.

Growth and Shape of *P. vietnamensis*

Length (mm), width (mm) and dry weight (mg) of *P. vietnamensis* varied between sites ($p < 0.05$) (Table 1, 2). The largest fronds at $37.5 \pm 2.1 \text{ mg}$ were found in February 2003 at the sheltered shore and $37.3 \pm 3.9 \text{ mg}$ in January 2004 at the exposed shore, while the lowest was found in November 2003, at $3.2 \pm 0.4 \text{ mg}$ at sheltered site (Table 2). In February 2004, *Porphyra* thalli were not found at Suansongtalay, the sheltered area (Table 2).

The shape of *P. vietnamensis* varied between sites and among the times of sampling. The thalli at exposed site, were shorter and wider than at the sheltered site. At both sites the blades were narrow and thin during the early sampling period (November and December), and wider and thicker at late sampling period (January and February) (Fig. 2).

Discussion

Life cycle

Porphyra vietnamensis gametophyte thalli were present on rocks at Kaoseng and Suansongtalay in the months of November to February, the rainy, coolest time of the year, as also reported by Lewmanomont and Ogawa (1978) and Ruangchuay and Notoya (2007). The smallest fronds of *P. vietnamensis* were found in November which is the first period of its development while the largest were found in the later period, January and February. During March to October, the conchocelis stage, the sporophyte, was found on the underside of shells. Temperature and salinity are known to be the major environmental factors inducing conchospore release of *P. vietnamensis* in Songkhla Province (Lewmanomont and Chittpoolkusol, 1993). Oyster shells and barnacles were collected from both sites; and the filamentous conchocelis phase was observed and then gametophytes later.

The heteromorphic life cycle of *Porphyra* is unique and complex. The gametophyte and sporophyte phases of *P. vietnamensis* develop at different times of the year. The different phenotypes have advantages by being able to inhabit different ecological niches which, besides other factors, may have different grazing pressures (Taylor and Hay, 1984; Thornber, 2006). Many species have complex life histories as for example, the brown algae, *Lessonia nigrescens*, *Macrocystis pyrifera*, and *Ecklonia radiata*; the brown crust *Ralfsia californica*; and the green alga *Acrosiphonia* spp (Dethier, 1981; Martinez and Santelices, 1998; Sussmann and DeWreede, 2001; Nelson and Schwarz, 2005). The heteromorphic life cycle of *P. vietnamensis* is useful in promoting cultivation because the conchochelis phase can be kept conveniently in small spaces as stock before putting it out into the larger scale cultivation of the marketable gametophyte.

Porphyra thalli at Suansongtalay, the more sheltered and less water-splashed area, disappeared earlier than at Kaoseng. The water splashing decreases desiccation, which increases in late February. In this study the higher temperature in February during 2004 could have caused greater desiccation and die off of gametophyte. Desiccation is known to limit the distribution and life span of many intertidal organisms including seaweeds (Tomanek and Helmuth, 2002)

Wave motion

The shape of *P. vietnamensis* differed at the two sites. The shorter and wider blades were found in exposed area, while the narrower and thinner blades were found at sheltered area. The adaptation of *Porphyra* might give an advantage for survival in the wave-swept rocky intertidal zone. This pattern is found in many marine algae such as *Chondrus crispus*, *Codium fragile*, *Mastocarpus papillatus*, and *Turbinaria ornata* (Kitzes and Denny, 2005; Boller and Carrington, 2006; Prathep et. al, 2006; D'Amours and Scheibling, 2007). However, the size of seaweed is influenced by other physiological and ecological factors, i.e. reproduction, photosynthesis, nutrient uptake and competition. Large macroalgae have more competitive and reproductive advantages than small macroalgae (Dudgeon and Johnson, 1992; Gaylord et al., 1994; Blanchette et al., 2002; D'Amours and Scheibling, 2007). Thus, variation in morphology could be a trade-off between the

dislodgement of blade and these factors. Our study shows that wave action plays an important role in establishing the phenotype of *Porphyra* populations.

Cultivation

In 1978, Lewmanomont and Ogawa reported that *Porphyra* in Thailand was harvested and sold on a small scale at US\$6 to 15 kg⁻¹, depending on the quality. An attempt to cultivate *Porphyra* at Kaoseng; was made in 1978. However, it was not successful due to the high water velocity. We suggest that *P. vietnamensis* cultivation should be promoted in Thailand, Vietnam, South East Asia and South Asia, since the of life cycle, biology and ecology of *P. vietnamensis* are now better understood. In addition, there are many techniques and technologies which have been used in the cultivation of *P. yezoensis*, *P. haitanensis* and *P. tenera* with great success in East Asia (Ayano et al., 1998; Han, 2006; Cultured Aquatic Species Information Programme, 2007; Monterey Bay Aquarium Research Institute, 2007).

Acknowledgements

We are grateful to the Thai Meteorological department, the National Institute of Coastal Aquaculture and Department of Biology, Faculty of Science. Thanks also to Professor Larry B. Liddle for manuscript improvement. Special thanks to the Development and Promotion of Science and Technology Talents Project of Thailand (DPST) and thanks to Thailand research fund (TRF), TRF4580041 for financial supported. We would like to thank the Seaweed and Seagrass Research Unit of Prince of Songkla University for research facilities.

References

- Avila M, Santelices B, McLachlan J (1986) Photoperiod and temperature regulation of the life history of *Porphyra columbina* (Rhodophyta, Bangiales) from central Chile. Can J Bot 64: 1867-1872
- Ayano Y, Koichi N, Naotsune S (1998) Axenic tissue culture and morphogenesis in *Porphyra yezoensis* (Bangiales, Rhodophyta). J. Phycol. 34: 1082-1087.
- Bird CJ, Chen CM,

- McLanahan J (1972) The culture of *Porphyra linearis* (Bangiales, Rhodophyceae).
Can J Bot 50:1859-1863
- Blanchette CA, Thornber C, Gaines SD (2002) Effects of wave exposure on intertidal furoid algae.
Proceedings of the California Islands Symposium 5:347-355
- Boller ML, Carrington E (2006) The hydrodynamic effects of shape and size change during
reconfiguration of a flexible macroalga. J Exp Biol Ecol 209:1894-1903
- Carrington E (2002) The ecomechanics of mussel attachment: from molecules to ecosystems. Integr
Comp Biol 42(4):846-852
- Conitz JM, Fagen R, Lindstrom SC, Plumley FG, Stekoll MS (2001) Growth and pigmentation of
juvenile *Porphyra torta* (Rhodophyta) gametophytes in response to nitrate, salinity
and inorganic carbon. J Appl Phycol 13: 423-431
- Cultured Aquatic Species Information Programme (2007) FAO, Rome. [http://
www.fao.org/fishery/culturedspecies/Porphyra_spp](http://www.fao.org/fishery/culturedspecies/Porphyra_spp). Cited 29 Dec 2007.
- D'Amours O, Scheibling RE (2007) Effect of wave exposure on morphology, attachment strength
and survival of the invasive green alga *Codium fragile* ssp. *tomentosoides*. J Exp
Mar Biol Ecol 351:129-142
- Denny MW (1995) Predicting physical disturbance: mechanistic approaches to the study of
survivorship on wave-swept shores. Ecol Monogr 65:371-418
- Denny MW (1999) Are there mechanical limits to size in wave-swept organisms? J Exp Biol Ecol
202:3463-3467
- Denny MW, Wethey D (2000) Physical processes that generate patterns in marine communities. in
M. Bertness, M. Hay, and S. Gaines (eds.) Marine Community Ecology, Sinauer
Press, New York, pp1-37
- Dethier MN (1981) Heteromorphic algal life histories: the seasonal pattern and response to
herbivory of the Brown Crust, *Ralfsia californica*. Oecol 49:333-339
- Dhargalkar, V.K., Agadi, V.V. & Untawale, A.G. (1981) Occurrence of *Porphyra vietnamensis*

- (Bangiales, Rhodophyta) along the Goa coast. *Mahasagar - Bulletin of the National Institute of Oceanography (India)* 14:75-77, 3 figs, 1 plate
- Dinabandhu, S., Baweja, P. & Kushwah, N. (2007) Developmental studies in *Porphyra vietnamensis*: A high-temperature resistant species from the Indian Coast. *Proceedings of the International Seaweed Symposium* 18: 53-60
- Dudgeon SR, Johnson AS (1992) Thick vs. thin: thallus morphology and tissue mechanics influence differential drag and dislodgement of two co-dominant seaweeds. *J Exp Mar Biol Ecol* 165: 23-43
- FAO 2003 yearbook of fishery statistics (2003) Aquaculture production 2001 Vol 92/2. Rome
- Gaylord B, Blanchette CA, Denny MW (1994) Mechanical consequences of size in wave-swept algae. *Ecol Monogr* 64(3):287-313
- Han KL (2006) Korean aquaculture status and future directions. *National Fisheries Research and Development Institute*. 12: 4-8
- Kitzes JA, Denny MW (2005) Red algae respond to waves: morphological and mechanical variation in *Mastocarpus Papillatus* along a gradient of force. *Biol Bull* 208:114-119
- Lewmanomont K, Ogawa H (1978) Study of the life cycle of *Porphyra* of Thailand. *Rep Fec Fish, Kasetsart Univ, Bangkok (In Thai)*
- Lewmanomont K, Chittpoolkusol O (1993) Life cycle of *Porphyra vietnamensis* Tanaka & Pham- Hoang Ho from Thailand. *Hydrobiologia* 260/261:391-400
- Lindsey Zemke-White W, Ohno M (1999) World seaweed utilisation: an end-of-century summary. *J Appl Phycol* 11(4):369-376
- Martinez EA, Santelices B (1998) Selective mortality on haploid and diploid microscopic stages of *Lessonia nigrescens* Bory (Phaeophyta, Laminariales). *J Exp Mar Biol Ecol* 229:219-239
- McDermid KJ, Stuercke B (2003) Nutritional composition of edible Hawaiian seaweeds *J Appl Phycol* 15(6):513-524

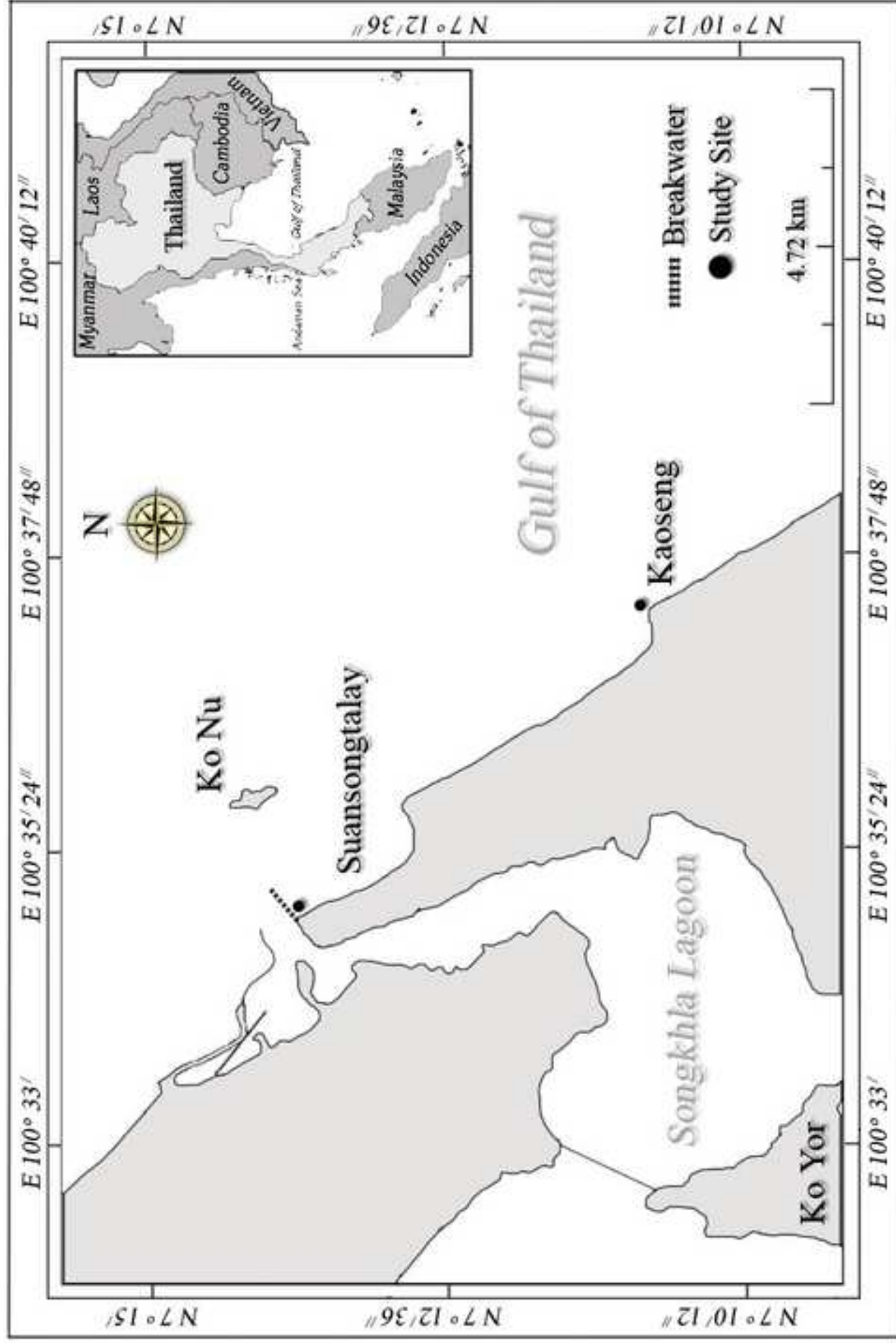
- Monterey Bay Aquarium Research Institute (2007) Moss Landing, California. <http://www.mbari.org/staff/conn/botany/reds/lisa/cult.htm>. Cited 29 Dec 2007.
- Nelson W, Schwarz AM (2005) Marine biodiversity, Living in the ocean waves: kelp life histories. *Wat Atmos* 13(3):22-23
- Noda H (1993) Effect of nitrogenous factor on recovery of discolored fronds of *Porphyra yezeonsis*. *J Appl Phycol* 5:255-258
- Notoya M, Kikuchi N, Mastuo M, Aruga Y, Miura A (1993) Culture studies of four species of *Porphyra* (Rhodophyta) from Japan. *Nip Sui Gak* 59:431-436
- Ohno M, Largo DD (1998) The seaweed resources of Japan. In Critchley AT, Ohno M (eds), *Seaweed resources of the world*. Japan International Cooperation Agency, Tokosuka, pp1-14
- Orfanidis S (2001) Culture studies of *Porphyra leucosticta* (Bangiales, Rhodophyta) from the Gulf of Thessaloniki, Greece. *Bot Mar* 44:533-539
- Pereira N, Kakode J, Dhargalkar VK (2005) Factors affecting the occurrence of *Porphyra vietnamensis* Tanaka & Pham-Hoang Ho along the Gao coast. *Cur Sci* 88(3):492-496
- Prathep A, Wichachucherd B, Thongroy P (2006) Spatial and temporal variation in density and thallus morphology of *Turbinaria ornata* in Thailand. *Aquat Bot* 86(2):132-138
- Ruangchuay R, Notoya M (2003) Physiological responses of blade and conchocelis of *Porphyra vietnamensis* Tanaka et Pham-Hoang Ho (Bangiales, Rhodophyta) from Thailand in Culture. *Algae* 18(1):21-28
- Ruangchuay R, Notoya M (2007) Reproductive strategy and occurrence of gametophytes of Thai Laver *Porphyra vietnamensis* Tanaka et Pham-Hoang Ho (Bangiales, Rhodophyta) from Songkhla Province. *Kasetsart J (Nat Sci)* 41:143-152
- Sahoo D, Tand X, Yarish C (2002) *Porphyra* – the economic seaweed as a new experiment system. *Cur Sci* 83(11): 1313-1316
- Shaughnessy FJ, DeWreede RE, Bell EC (1996) Consequences of morphology and tissue strength

- to blade survivorship of two closely related Rhodophyta species. Mar Ecol Prog Ser 136:257-266
- Shameel M & Aftab J (1993) Thallus structure, reproduction and antifungal activity of *Porphyra vietnamensis* (Bangiales, Rhodophyta) from Karachi coast. Marine Research, Pakistan 2: 11-16, 6 figs, 1 table
- Sussmann AV, DeWreede RE (2001) Life history of *Acrosiphonia* (Codiolales, Chlorophyta) in Southwestern British Columbia, Canada. Am J Bot 88(9): 1535-1544
- Tanaka T, Ho PH (1962) Notes on some marine alae from Viet-Nam-I. Mem Fac Fish Kagoshima Univ 11:24-40
- Taylor PR, Hay ME (1984) Functional morphology of intertidal seaweeds: adaptive significance of aggregate vs solitary forms. Mar Ecol Prog Ser 18:295-302
- Thornber CS (2006) Functional properties of the isomorphic biphasic algal life cycle. Integ Comp Biol 46(5): 605-614
- Tomanek L, Helmunth B (2002) Physiological Ecology of Rocky Intertidal Organisms: A Synergy of Concepts. Integ Comp Biol 42:771–775
- Tseng CL (1984) Common seaweed of China. Science Press. Qingdao
- Waaland JR, Dickson LG, Duffield ECS (1990) Conchospore production and seasonal occurrence of some *Porphyra* species (Bangiales, Rhodophyta) in Washington State. Hydrobiologia 204/205:453-459.
- Zar JH (1984) Biostatistical Analysis. Prentice Hall, New Jersey

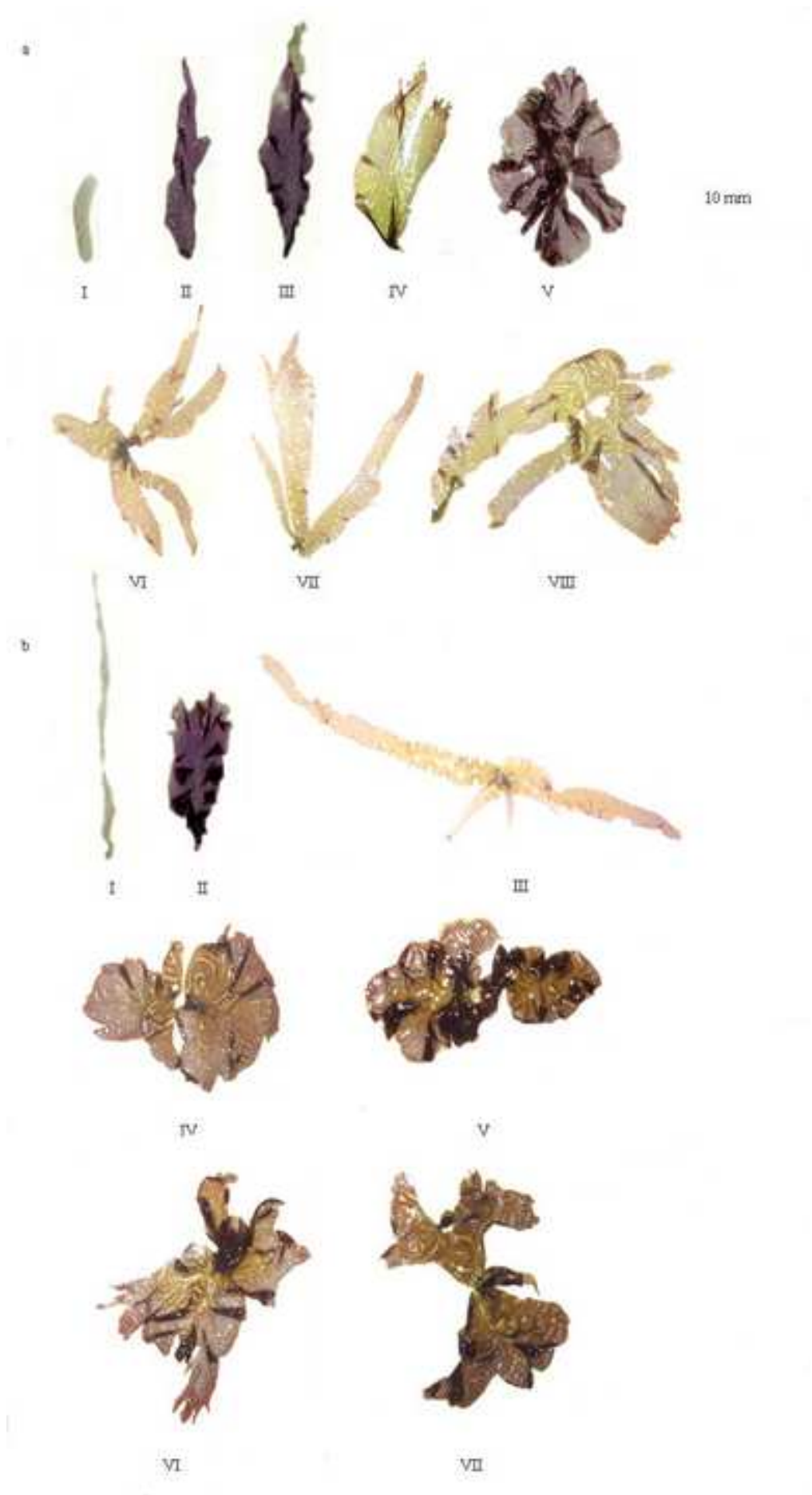
Figure 1. Study sites of *Porphyra vietnamensis* at Kaoseng and Suansongtalay, Songkhla, Thailand.

Figure 2. Blade shape of *Porphyra vietnamensis* Tanaka et Pham-Hoang Ho at November 2003 – December 2006 at exposed and sheltered area. Site a: Kaoseng (exposed area), site b: Suansongtalay (sheltered area), I=Dec 02, II=Feb 03, III=Nov 03, IV=Jan 04, V-VIII= Jan 07.

Figure_1
[Click here to download high resolution image](#)



Figure_2
[Click here to download high resolution image](#)



	N	Sheltered area		Exposed area		P	Temperature (°C)		Salinity (ppt)		Nitrate (mg/l)		Phosphate (mg/l)	
		Mean±SE		Mean±SE			R ²	P	R ²	P	R ²	P	R ²	P
Length (cm)	320	39.55±2.19		29.12±1.42		0.00	0.217	0.174	0.372	0.061	0.004	0.862	0.007	0.815
Width (cm)	150	5.8±0.34		9.9±0.78		0.00	0.125	0.316	0.129	0.308	0.001	0.918	0.016	0.729
Dry weight (mg)	320	17.4±1.4		24.4±2.8		0.00	0.043	0.566	0.005	0.85	0.022	0.682	0.508	0.021

	N	Sheltered area					Exposed area				
		Dec-02	Feb-03	Nov-03	Jan-04	Feb-04	Dec-02	Feb-03	Nov-03	Jan-04	Feb-04
		Mean±SE					Mean±SE				
Length (mm)	320	60.54±3.86	44.88±1.89	62.57±3.06	30.30±2.16	x	30.32±1.38	27.94±0.89	26.23±1.52	32.08±1.47	29.04±1.81
Width (mm)	150	-	-	4.92±0.26	24.1±1.46	x	-	-	12.74±0.85	20.48±2.04	16.33±0.99
Dry weight (mg)	320	17.8±1.6	37.5±2.1	3.2±0.4	28.5±2.8	x	23.6±2.2	26.6±2.6	13.9±1.5	37.3±3.9	20.6±3.8

Appendix 3

Elsevier Editorial System(tm) for Aquatic Botany
Manuscript Draft

Manuscript Number:

Title: Effects of wave exposure on population and reproductive phenology of an algal turf, *Gelidium pusillum* (Gelidales, Rhodophyta), Songkhla, Thailand

Article Type: Research Paper

Section/Category:

Keywords: algal turf; *Gelidium pusillum*; life phase; population; Thailand; wave exposure

Corresponding Author: Dr. Anchana Prathep, Ph.D.

Corresponding Author's Institution: Prince of Songkla University, Thailand

First Author: Anchana Prathep, Ph.D.

Order of Authors: Anchana Prathep, Ph.D.; Khanjanapaj Lewmanomont, Ph.D.

Manuscript Region of Origin:

Abstract:

Suggested Reviewers: Robert DeWreede Ph.D.

Professor Emeritus, Department of Biology, University of British Columbia, Canada

dewreede@interchange.ubc.ca

He has been working on the life history and ecology of this group for sometime. He has a lot of publications in this kind of research.

Rui Santos Ph.D.

Professor , Unidade de Ciências e Tecnologias dos Recursos Aquáticos, Universidade do Algarve, Portugal

rosantos@mozart.si.ualg.pt

He has been working for this group for sometime; and he has a recent publication on the life phase strategy of this group.

Alan Millar Ph.D.

Principal Research Scientist, Department of Environment and Climate Change , Botanic Gardens Trust,
Sydney, Australia

alan.millar@rbgsyd.nsw.gov.au

He has been working on the diversity of this group in the Australia. He might be able to give some general idea of how the life history of this group.

Stein FREDRIKSEN Ph.D.

Professor , Department of Biology, University of Oslo, Norway

stein.fredriksen@bio.uio.no

He has been working in this group for many years; and he has a great record of publication.

Opposed Reviewers:

TITLE: Effects of wave exposure on population and reproductive phenology of an algal turf, *Gelidium pusillum* (Gelidales, Rhodophyta), Songkhla, Thailand

AUTHORS: Anchana Prathep¹, Khanjanapaj Lewmanomont ²and Pimchanok Baupet ³

AFFILIATION: ^{1,3} Seaweed and Seagrass Research Unit, Centre for Biodiversity of Peninsular Thailand (CBIPT), Department of Biology, Faculty of Science, Prince of Songkla University, Songkhla, 90112; Tel: 66-81-542-6977 Fax: 66-74-212-917;

² Faculty of Fisheries, Kasetsart University, Bangkok 10903, Thailand

CORRESPONDENCE E-mail¹: anchana.p@psu.ac.th

Abstract

The effect of wave exposure on the population and reproductive phenology of the common red alga, *Gelidium pusillum* (Stackhouse) le Jolis, was investigated between July 2003 and June 2004, at Suan Song Tha Le, Songkla Province, Thailand. Lengths of thalli, percentage cover, percentage of reproductive fronds and the number of reproductive structures were examined monthly in relation to different degrees of wave exposure (sheltered vs exposed), temperature and rainfall. Frond length and percentage cover of *G. pusillum* were different among sites and seasons. Shorter fronds were found on the exposed shore which had a greater percentage cover. Fronds bleached and died off during the summer months (April and May), which resulted in shorter fronds and reduced percentage cover in June. The thalli reproduced throughout the year, with a predominance of tetrasporophytes. The highest percentage of tetrasporophytic fronds was 33% in February 2004 and 13.33% of cystocarpic fronds in April 2004, but male gametophytic fronds were never observed. Rainfall showed a strongly negative influence on

reproduction since no reproductive fronds were observed during the rainy season ($R^2 = 0.49$, $P < 0.01$). The dominance of *Gelidium pusillum* at this study site and throughout the world might be a function of persistent vegetative growth which forms dense clumps of turf and its ability to reproduce almost throughout the entire year.

Key words: algal turf; *Gelidium pusillum*; life phase; population; Thailand; wave exposure

Introduction

Exposure to wave action is generally considered to be an important factor in the distribution and abundance of intertidal organisms (Lewis, 1964; Stephenson and Stephenson, 1972; Denny, 1998). It is also well known to influence size, morphology and distribution patterns. Organisms on wave swept shores are often much smaller than those in more wave protected habitats (Lewis, 1968; Menge, 1976; Blanchetter, 1997, Prathep et al., 2007). Wave exposure also influences the community structure via water motion (Lobban and Harrison, 1994). Propagule dispersal, fertilization, settlement and recruitment (Vadas et al., 1990; Serra~o et al., 1996) are all affected. Recent studies on the red alga, *Mazzaella oregona* (Mudge and Scrosati, 2003) have shown an inverse relationship between G:T (gametophyte:tetrasporophyte) ratio and the degree of wave exposure although this is not the case in *M. parksii* (Scrosati and Mudge, 2004).

The taxonomy of red algae is based on the nature of reproductive structures and details of life histories. In the family Gelidiaceae (Order Gelidiales) gametophytes and tetrasporophytes are isomorphic. Various investigators have reported that tetrasporophytic fronds predominate over gametophytic fronds in natural populations

(Akatsuka, 1986; Santelices, 1988; Santos and Duarte, 1996). *Gelidium pusillum* (Stackhouse) le Jolis has a very wide geographic range throughout UK, Europe, Chile and Australia (Dixon and Irvine, 1977; Santelices, 1988; Rueness and Fredriksen, 1998; Millar and Freshwater, 2005). It is an intertidal turf-forming alga with a stoloniferous growth form. The clump erect fronds could be more influenced by seasons, due to the increased degree of exposure, desiccation at the upper shore level as well as grazing pressure (Dixon and Irvine, 1977; Santelices, 1988). Intensive studies have been carried out on *G. sesquipedale* (Clem.) Born. et Thur. because of its economic value as an agarophyte (Santos, 1994; 1995; Santos and Duarte, 1996; Santos and Nyman, 1998). However, very little research has been done on *G. pusillum*.

In this study we examined 1) the effects of wave exposure, temperature and rainfall on percentage cover, length of thalli, life phase and degree of reproduction on populations of *G. pusillum* and 2) its reproductive phenology throughout the year.

Materials and Methods

Preliminary observations revealed that *G. pusillum* is a dominant red alga on many intertidal shores in Southern Thailand, it can form a vast area of monospecific stand. In Songkhla province, at Suan Song Tha Le (7°13'N, 100°34'W), a high abundance of *G. pusillum* was found over a 1 km long artificial rocky wall, on the intertidal ruge between 0.4-1.5 m. *G. pusillum* is directly exposed to the wave motion which is especially high during the monsoon season (October-March). Sheltered area, thallus does not directly face the ocean and therefore are less exposed to wave splashes. The water velocity was measured at high tide in May, using MINI Current Meter model SD-6000 (Sensordata,

Norway). The water velocity at the exposed site was 2 times greater than at sheltered, $0.034 \pm 0.007 \text{ ms}^{-1}$ $0.016 \pm 0.006 \text{ ms}^{-1}$ and, respectively.

Each month between July 2003 and June 2004, three hundred fronds were sampled from ten 50 cm X 50 cm quadrats on both the sheltered and exposed areas of the rocky wall.

Fifteen fronds from each quadrat were measured for length and examined for reproductive status. Razor blade cross sections were stained using 1% aniline blue and examined for spermatangia, cystocarps and tetrasporic sori (Fredriksen et al., 1994).

Temperature and rainfall were monitored to test for whether there was any correlation with percentage cover, length of thalli, percentage of reproductive fronds and number of different reproductive phases. Physical parameters were provided by Thai Meteorological Department and NICA (National Institute of Coastal Aquaculture), Songkhla.

Two way ANOVA was employed to test the differences in percentage cover, length of thalli, life phase and numbers of each reproductive phase among sites and seasons using STATISTICA, version 5.0. When necessary, data were transformed to meet the assumptions of the parametric test. Multiple comparisons were made following Zar (1984) when there were significant differences between treatments. Statistical results are presented based on the transformed analyses, but for clarity, graphical output was based on the untransformed means. Regression analysis was employed to assess the relationship between temperature and rainfall on percentage cover, length, percentage of reproductive fronds, life phase and number of each reproductive phase.

Results

1
2
3
4 There were variations in length of *G. pusillum* frond among sites and time of year ($F_{2,18}$
5 $=15.30$, $P < 0.05$). Specimens from the sheltered shore were taller than those on the
6
7 exposed shore (Fig. 1a). The average longest frond was $1.04 \pm .03$ cm (mean \pm S.E.) on
8
9 the sheltered shore during July 2003. On the exposed shore the average shortest frond
10
11 was $0.6 \pm .01$ cm during May 2004 ($F_{2,18} = 7.52$, $P < 0.05$). Many bleached tips in late
12
13 April and beginning of May were observed.
14
15
16
17
18

19 There were variations in percentage cover of *G. pusillum* both among sites and time of
20
21 year ($F_{2,18} = 5.02$, $P < 0.05$). The highest percentage cover was 82.8 ± 2.3 (Mean \pm S.E.)
22
23 during July 2003 on the exposed area (Fig. 1b). Significant greater percentage cover of *G.*
24
25 *pusillum* was found on the exposed area throughout the study ($F_{2,18} = 99.86$, $P < 0.001$).
26
27 The lowest percentage cover was 39.7 ± 6.06 in October on the exposed shore; and the
28
29 lowest percentage cover of the sheltered shore was 7.8 ± 2.49 in June 2004, after the
30
31 bleaching phenomenon observed.
32
33
34
35
36

37 Seasonal variation in percentage of reproduction was striking. *G. pusillum* reproduced
38
39 throughout the year, except for November and December 2003, the beginning of the rainy
40
41 season (Fig. 2a). Both tetraspores and carpospores were observed, but spermatangia were
42
43 never found in this study. There was greater percentage of tetrasporophytic plants in this
44
45 population. For example, more than 33% of tetrasporophytic plants were found in July
46
47 2003 and February 2004. But also only a few cystocarpic plants were found.
48
49
50
51

52 There were variations in number of tetrasporic sori of *G. pusillum* among sites and
53
54 months ($F_{2,18} = 4.49$, $P < 0.001$). In general the thalli produced great numbers of
55
56 tetraspores. The highest number of tetrasporic sori was 31.91 ± 6.01 sori /frond in
57
58 January 2004, however, as mentioned above, there were no reproductive fronds in
59
60
61
62
63
64
65

November and December 2003, (Fig. 2b). There were variations of number of cystocarpic specimens among sites and months ($F_{2,18} = 22.97, P < 0.001$). The highest number was 3.52 ± 0.089 cystocarps/ frond in April 2004 at the exposed shore site (Fig. 2c). This suggests that there were male gametophytes in the previous months.

Percentage cover and length of *G. pusillum* were not significantly influenced by temperature or rainfall (Table 1). However, increased temperature during summer months could decrease the frond length and some bleaching was observed. The bleached fronds later died off and washed away during the rainy season. Then, the percentage coverage declined.

Reproduction and the number of reproductive structures were significantly influenced by temperature and rainfall (Table 1). High temperature not only stressed reproduction but also caused the plants to die off. However, an increase in temperature was correlated with a fewer cystocarpic fronds (Fig. 3). Rainfall, caused a decrease in salinity to <10 psu during the rainy season. This low salinity is also correlated with low reproduction as expressed in percentage of reproductive fronds (Fig. 4). No reproductive fronds were observed during the mid-rainy season in November-December 2003.

DISCUSSION

The presence of a greater number of tetrasporophytic fronds than cystocarpic fronds, and only a few male or female gametophytic fronds was common in *G. pusillum*. This conforms to the reports for the family Gelidaceae (Akatsuka, 1986; Santelices, 1988; Serviere-Zaragoza and Scrosati, 2002). However in the closely related order, Gigartinales, gametophytes are the dominant life phase (DeWreede and Green, 1990; Hommersand et al., 1993; Scrosati et al., 1994). In this study the number of cystocarps

1
2
3
4 was influenced by wave exposure. The cystocarps observed were on thalli from the
5
6 exposed area just after the rainy season, a situation that might be caused by the greater
7
8 water motion which could increase the success of fertilization by enhancing the ability of
9
10 the nonmotile spermatia to encounter the trichogyne of the carpogonium.
11
12

13
14 Plants reproduced throughout the year, a condition which, together with the vegetative
15
16 reproduction, accounts for the great percentage cover of this species in the study sites.
17
18 The dense stand of algal-forming turf can persists under high stress along the intertidal
19
20 shore (Hay, 1981; Guiry and Womersley, 1993). Since fronds could grow into 2
21
22 directions both as creeping axes and as uprights, the former withstands the high wave
23
24 motion and provides as base for the shorter upright axes such as were found in the wave-
25
26 exposed area. Although, this species is known as a perennial plant, the upright fronds
27
28 bleached during summer months, when the apical tips became weak, the fronds became
29
30 shorter and died, decreasing the coverage of the plants two months shortly after. This is
31
32 similar to the pattern of many other turf forming red algae (Beach and Smith, 1996;
33
34 Scorsati and DeWreede, 1998).
35
36
37
38
39

40
41 The onset of tetraspore and carpospore production did not reflect a physiological trade-
42
43 off between resource allocation to vegetative growth and allocation to reproduction as
44
45 suggested by Harper and Ogden (1970). *G. pusillum* reproduced spores throughout the
46
47 year, except in November and December, without any decline of length, density or die
48
49 off. Although known to be perennial, reproduction was not reduced as hypothesized (Bell
50
51 1984a) by the idea that plants reduce allocation to individual growth or general
52
53 maintenance (Bell, 1984b; Obeso, 2002) in favor of reproductive cell formation or vice
54
55 versa. It is possible that resources at the site exceed the requirements. Nutrient levels
56
57
58
59
60
61
62
63
64
65

1
2
3
4 were high throughout the year. The highest was found during the rainy season, NO_3^{-1}
5
6 was 0.12 mg/l and PO_4^{-3} was 0.024 mg/l. High concentrations of nutrients from urban
7
8 runoff as well as from agriculture and aquaculture around the basin (Panapitukkul et al.,
9
10 2005; Chevakidagarn, 2006) are well-known.
11
12

13
14 The rainfall, which decreased the salinity, might be expected to inhibit reproduction.
15
16 Although increased temperature caused bleaching and later die off, the decline of
17
18 reproduction might be due to lower salinity, which was < 10 psu at the site during the
19
20 rainy season. The salinity stress lower than 15 psu was reported to reduce growth rate to
21
22 almost 5 times in some *Gelidium* spp. (Oliger and Santelices, 1981). This is known to
23
24 cause a decrease in productivity and reproduction in many red algae and now in *G.*
25
26
27
28
29 *pulsillum* as well.
30

31
32 There were no shifts of life phase between seasons and sites in *G. pusillum* as has been
33
34 observed in *Mazzaella* spp. (Mudge and Scrosati, 2003; Scrosati and Mudge, 2004). A
35
36 predominance of tetrasporophytes is a common feature in *Gelidium* (Montalva and
37
38 Santelices, 1981; Carter, 1985; Akatsuka, 1986; Macler and West, 1987; Santelices,
39
40 1990; Melo and Neushul, 1993; Sosa et al., 1993). Carmona and Santos (2006) have
41
42 recently tested the advantages of tetrasporophytes over the gametophytes in *G.*
43
44
45
46
47 *sesquipedale* through their ecophysiological performance. They found that there were no
48
49 significant differences either in the photosynthesis rate, nitrogen uptake, nitrate reductase
50
51 activity, or biochemical composition of phases, but there was an advantage in vegetative
52
53 recruitment and spore production. The dominance of tetrasporophytes of *G. sesquipedale*
54
55 cannot be explained but it does reflect the nature of the success of this turf-forming alga
56
57
58
59 throughout the world.
60
61
62
63
64
65

The G:T ratio of *G. pulsillum* in our study was 1:14; the G:T ratio in *Gelidium* may be as high as 1:20. Abbott (1980) suggested that this might be because of the failure in the viability of tetraspores, which are the sources of gametophytes and/or the enhanced capability of carpospores to produce tetrasporophytes. Although, we found some mature red tetraspores and carpospores in our study, newly recruited plants were rarely observed. After release spores could be washed away or trapped within the turf, which form new thalli within the patch. Further investigation of spore settlement, recruitment and development both in laboratory and field would allow us to have a better understanding of the population structure and its maintenance in what appears to be a unique red algal species.

Acknowledgements

This study was funded by Thailand Research Fund Grant No. TRG 4580041 to AP. We would like to thank Pimonrat Thongroy for sharing preliminary observations and Jaruwan Mayakul for help with data analyses. We are also indebted to Professor Larry B. Liddle who kindly helped with the manuscript preparation.

References

- Abbott, I.A., 1980. Seasonal population biology of some carragenophytes and agarophytes. In: Abbott, I.A., Foster, M.S., Eklund, I.F. (Eds.), Symposium on Useful Algae. Seagrant Program, La Jolla CA, pp. 45–53.
- Akatsuka, I., 1986. Japanese Gelidiales (Rhodophyta), especially *Gelidium*. Oceanogr Mar. Biol. Annu. Rev. 24, 171–263.
- Beach, K.S., Smith, C.M., 1996. Ecophysiology of tropical rhodophytes. I. Microscale acclimation in pigmentation. J. Phycol. 32, 701–710.
- Bell, G., 1984a. Measuring the cost of reproduction. I. The correlation structure of the life

- table of a plankton rotifer. *Evolution*. 38, 300–313.
- Bell, G., 1984b. Measuring the cost of reproduction. II. The correlation structure of the life tables of five freshwater invertebrates. *Evolution*. 38, 314–326.
- Blanchetter, C.A., 1997. Size and survival of intertidal plants in response to wave action: a case study with *Fucus gardneri*. *Ecology*. 78, 1563–1578.
- Carmona, R., Santos, R., 2006. Is there an ecophysiological explanation for the gametophytes-tetrasporophyte ratio in *Gelidium sesquipedale* (Rhodophyta). *J Phycol.* 42, 359-269.
- Carter, A.R., 1985. Reproductive morphology and phenology, and culture studies of *Gelidium pristoides* (Rhodophyta) from Port Alfred in South Africa. *Bot. Mar.* 28, 303–311.
- Chevakidagarn, P., 2006. Operational problems of wastewater treatment plants in Thailand and case study: wastewater pollution problems in Songkhla Lake Basin. *Songklanakarin J. Sci. Technol.* 28(3), 633-639.
- Denny, M.W., 1998. *Biology and the Mechanics of the Wave Swept Environment*. Princeton University Press, Princeton, NJ.
- DeWreede, R.E., Green, L.G., 1990. Patterns of gametophyte dominance of *Iridaea splendens* (Rhodophyta) in Vancouver Harbour, Vancouver, British Columbia, Canada. *J. Appl. Phycol.* 2, 27–34.
- Dixon, P.S., Irvine, L.M., 1977. *Seaweeds of the British Isles*, vol. 1, Rhodophyta, part 1, Introduction, Nemaliales, Gigartinales. British Museum (Natural History), London.
- Fredriksen, S., Guiry, M.D., Rueness, J., 1994. Morphological and biosystematic studies of *Gelidium pusillum* and *G. pulchellum* (Gelidiaceae, Rhodophyta) from Europe. *Phycologia*. 33, 462–470.
- Gordon, R., Brawley, S.H., 2004. Effect of water motion on propagule release from algae with complex life histories. *Mar. Biol.* 145(1), 21-29.
- Guiry, M.D., Womersley, H.B.S., 1993. *Capreolia implexa* gen. et sp. nov. (Gelidiales, Rhodophyta) in Australia and New Zealand: an intertidal matforming alga with an unusual life history. *Phycologia*. 32, 266-277.
- Haper, J.L., Ogden, J., 1970. The reproductive strategy of higher plants: I. The

- concept of strategy with special reference to *Senecio vulgaris* L. J. Ecol. 58, 681–698.
- Hay, M.E., 1981. The functional morphology of turf-forming seaweeds: persistence in stressful marine habitats. Ecology. 62, 739–50.
- Hommersand, M.H., Guiry, M.D., Fredericq, S., Leister, G.L., 1993. New perspectives in the taxonomy of the Gigartinaceae (Gigartinales, Rhodophyta). Hydrobiologia. 260/261, 105–20.
- Lewis, J.R., 1964. The Ecology of Rocky Shores. English Universities Press, London.
- Lewis, J.P., 1968. Water movements and their role in rocky shore ecology. Sarsia. 34, 13–36.
- Lobban, C.S., Harrison, P.J., 1994. Seaweed Ecology and Physiology. Cambridge University Press, Cambridge.
- Macler, B.A., West, J.A., 1987. Life history and physiology of the red alga, *Gelidium coulteri* in unialgal culture. Aquaculture. 61, 281–93.
- Melo, R.A., Neushul, M., 1993. Life history and reproductive potential of the agarophyte *Gelidium robustum* in California. Hydrobiologia. 1, 1–7.
- Menge, B.A., 1976. Organization of the New England rocky intertidal community: role of predation, competition, and environmental heterogeneity. Ecol. Monogr. 46, 355–393.
- Millar, A.J.K., Freshwater, D.W., 2005. Morphology and molecular phylogeny of marine algal order Gelidiales (Rhodophyta) from New South Wales, including Lord Howe and Norfolk Islands. Aus. Sys. Bot. 18, 215–263.
- Montalva, S., Santelices, B., 1981. Interspecific interference among species of *Gelidium* from Central Chile. J. Exp. Mar. Biol. Ecol. 53, 77–88.
- Mudge, B., Scrosati, R., 2003. Effects of wave exposure on the proportion of gametophytes and tetrasporophytes of *Mazzaella oregona* (Rhodophyta: Gigartinales) from Pacific Canada. J. Mar. Biol. Ass. UK. 83, 701–704.
- Obeso, J.R., 2002. The costs of reproduction in plants. New Phytol. 155, 321–348.
- Oliger, P., Santelices, B., 1981. Physiological ecology studies on Chilean Gelidiales. J. Exp. Mar. Biol. Ecol. 53, 65–75.
- Panapitukkul, N., Pengnoo, A., Siri Wong, C., Chatupote, W., 2005.

- Hydrogeomorphological controls on groundwater quality in the Rattaphum catchment (Songkhla lake basin), Thailand. *Water Air Soil Pollut.* 5, 149–163.
- Prathep, A., Wichachucherd, B., Thongroy, P. 2007. Spatial and temporal variation in density and thallus morphology of *Turbinaria ornata* in Thailand. *Aqua. Bot.* 86, 132–138.
- Rueness, J., Fredriksen, S., 1998. Intraspecific reproductive variation in *Gelidium pusillum* (Stackh.) Le Jol. (Gelidiales, Rhodophyta) from Europe. *J. Appl. Phycol.* 10, 253–260.
- Santelices, B., 1988. Synopsis of biological data on the seaweed genera *Gelidium* and *Pterocladia* (Rhodophyta). *FAO Fish Synop.* 145, 1–55.
- Santelices, B., 1990. Patterns of reproduction, dispersal and recruitment in seaweeds. *Oceanogr. Mar. Biol. Annu. Rev.* 28, 177–276.
- Santos, R., 1994. Frond dynamics of the commercial seaweed *Gelidium sesquipedale*: effects of size and frond history. *Mar. Ecol. Prog. Ser.* 107, 295–305.
- Santos, R., 1995. Size structure and inequality in a commercial stand of the seaweed *Gelidium sesquipedale*. *Mar. Ecol. Prog. Ser.* 119, 253–6.
- Santos, R., Duarte, P., 1996. Fecundity, spore recruitment and size in *Gelidium sesquipedale* (Gelidiales: Rhodophyta). *Hydrobiologia.* 326/327, 223–228.
- Santos, R., Nyman, M., 1998. Population modelling of *Gelidium sesquipedale* (Rhodophyta, Gelidiales). *J. Appl. Phycol.* 10, 261–272.
- Scrosati, R., DeWreede, R.E., 1998. The Impact of frond crowding on frond bleaching in the clonal intertidal alga *Mazzaella cornucopiae* (Rhodophyta, Gigartinaceae) From British Columbia, Canada. *J. Phycol.* 34, 228–232.
- Scrosati, R., Garbary, D.J., McLachlan, J., 1994. Reproductive ecology of *Chondrus crispus* (Rhodophyta, Gigartinales) from Nova Scotia, Canada. *Bot. Mar.* 37, 293–300.
- Scrosati, R., Mudge, B., 2004. Effects of elevation, wave exposure, and year gametophytes and tetrasporophytes in *Mazzaella* (Rhodophyta, Gigartinaceae) populations. *Hydrobiologia.* 520, 199–205.
- Serraõ, E.A., Pearson, G., Kautsky, L., Brawley, S.H., 1996. Successful external fertilization in turbulent environments. *Proc. Natl. Acad. Sci. USA.* 93, 5286–90.

- 1
2
3
4 Servie`re-Zaragoza, E., Scrosati, R., 2002. Reproductive Phenology of *Pterocladia*
5 *capillacea* (Gelidiales) from Southern Baja California, Mexico. Pac. Sci. 56(3),
6 285-290.
7
8
9
10 Sosa, P.A., Jimenez Del Rio, M., Garcia- Reina, G., 1993. Physiological comparison
11 between gametophytes and tetrasporophytes of *Gelidium canarensis* (Gelidiaceae:
12 Rhodophyta). Hydrobiologia. 260/261, 445–449.
13
14
15
16 Stephenson, T.A., Stephenson, A., 1972. Life between the Tide-Marks on a rocky Shore.
17 W.H. Freeman and Co., San Francisco.
18
19
20
21 Vadas, R.L., Wright, W.A., Miller, S.L., 1990. Recruitment of *Ascophyllum nodosum*:
22 wave action as a source of mortality. Mar. Ecol. Prog. Ser. 61, 263–272.
23
24
25
26 Zar, J.H., 1984. Biostatistical Analysis. Prentice-Hall International, London.
27
28
29
30
31
32
33
34
35
36
37
38
39
40
41
42
43
44
45
46
47
48
49
50
51
52
53
54
55
56
57
58
59
60
61
62
63
64
65

Table 1. Summarize of length, percentage cover, percentage of reproductive fronds and number of reproductive organs of *G. pulsilum* at the sheltered and exposed areas; and its relations to temperature and rainfall during July 2003-June 2004 at Songkhla province, Thailand.

	N	Sheltered area	Exposed area	Temperature (°C)		Rainfall (mm)	
				R^2	P	R^2	P
Length (cm)	1800	0.759±0.007	0.736±0.005	0.18	0.52	0.001	0.85
% cover	150	35.14±1.65	63.01±1.87	0.07	0.22	0.10	0.131
% Reproductive fronds	12	15.66±3.22	15.88±4.81	0.22	0.13	0.49	<0.01
% Tetrasporic frond	12	14.61±3.01	12.92±4.04	0.08	0.18	0.36	<0.001
% Cystocarpic frond	12	1.05±0.44	2.97±2.01	0.18	<0.05	0.05	0.31
No. of tetrasporic sori/ frond	1800	7.38±0.06	9.62±0.96	0.07	0.23	0.27	<0.001
No. of cystocarps/frond	1800	0.06±0.02	0.36±0.08	0.16	0.05	0.03	0.38

Figure_captions

Fig. 1 *Gelidium pusillum* population. Effects of wave exposure on length (1a) and % coverage (1b) throughout the year .

Fig. 2 *Gelidium pusillum* population. Effects of wave exposure on % reproduction (2a), No. of tetrasporic sori/ frond (2b) and No. of cystocarps/ frond (2c) throughout the year.

Fig.3 Significant correlation between temperature and % cystocarphytic frond and No. of cystocarps/ frond of *Gelidium pusillum*.

Fig.4 Significant correlation between rainfall and % reproductive fronds, % tertasporophytic fronds and No. of tetrasporic sori/ frond of *Gelidium pusillum*.

Figure1

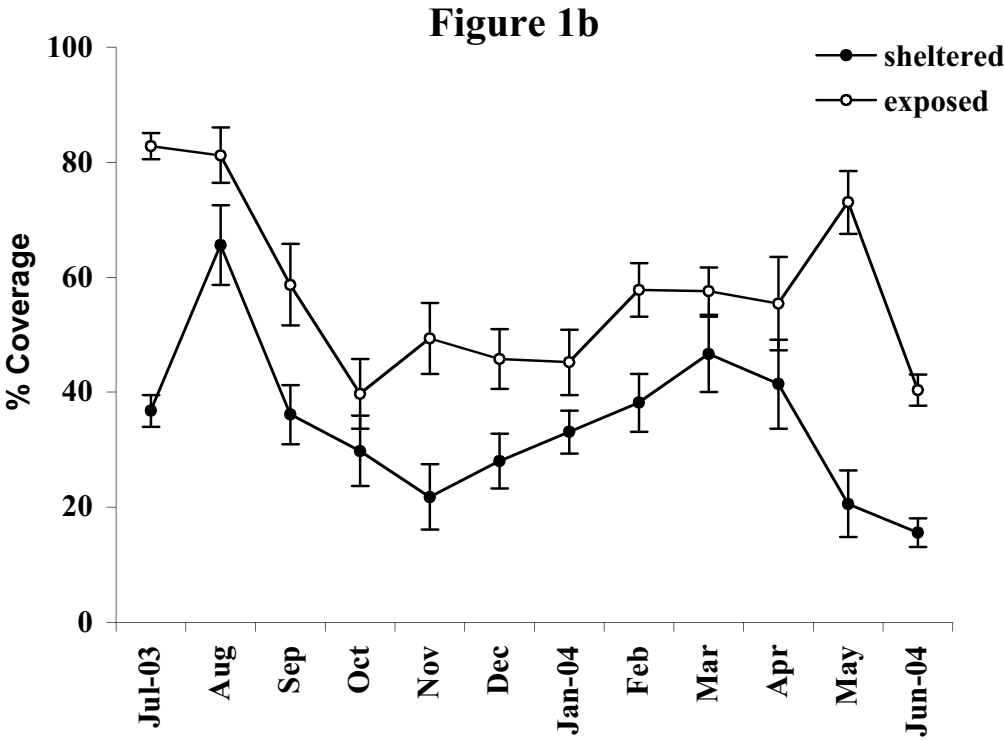
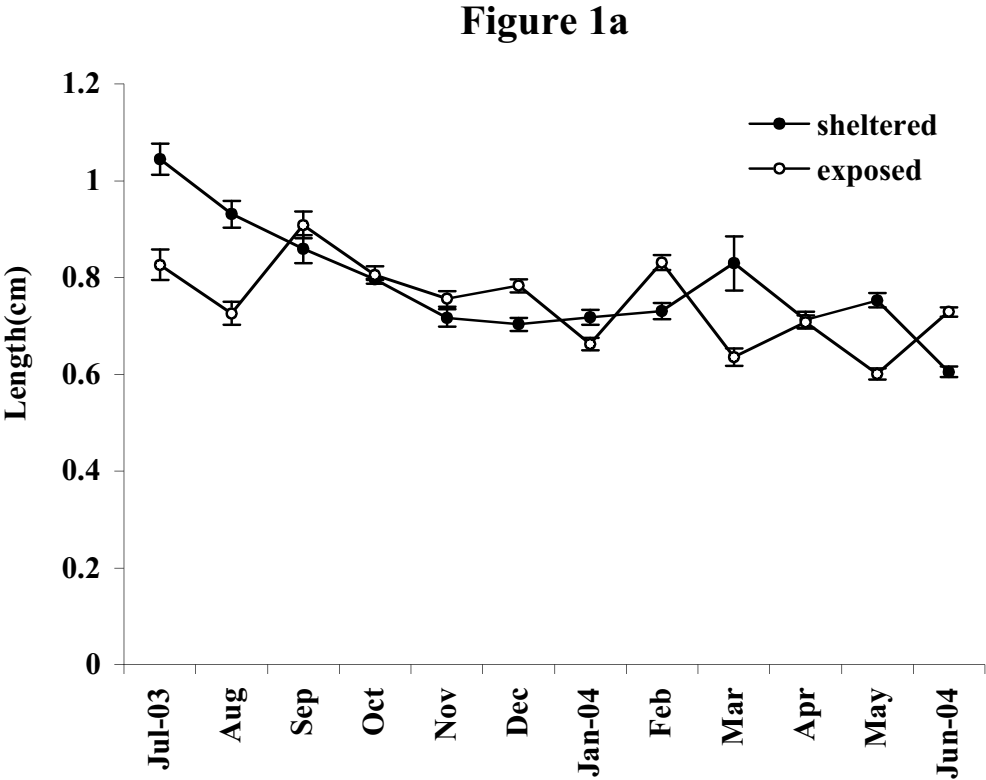


Figure2

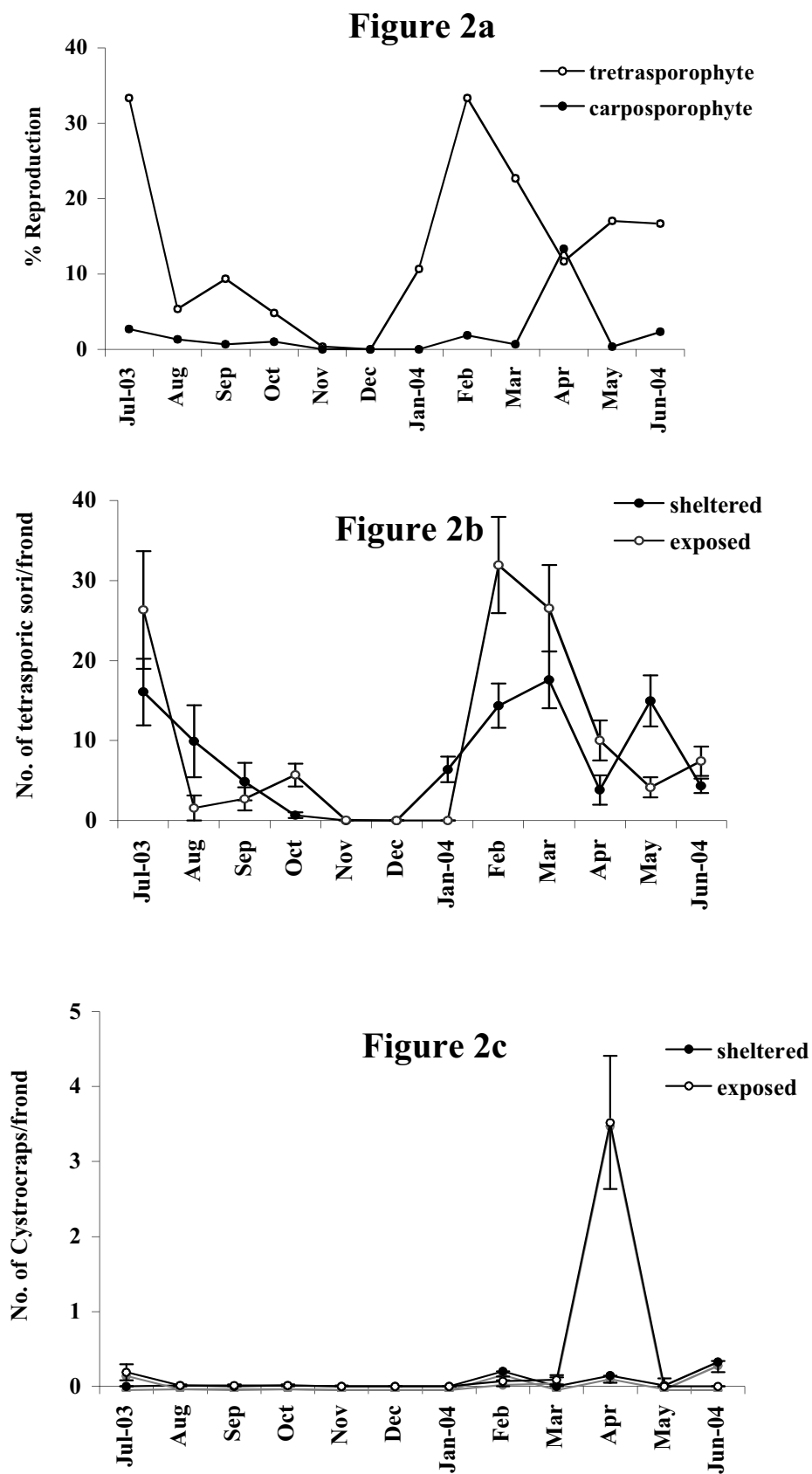


Figure3

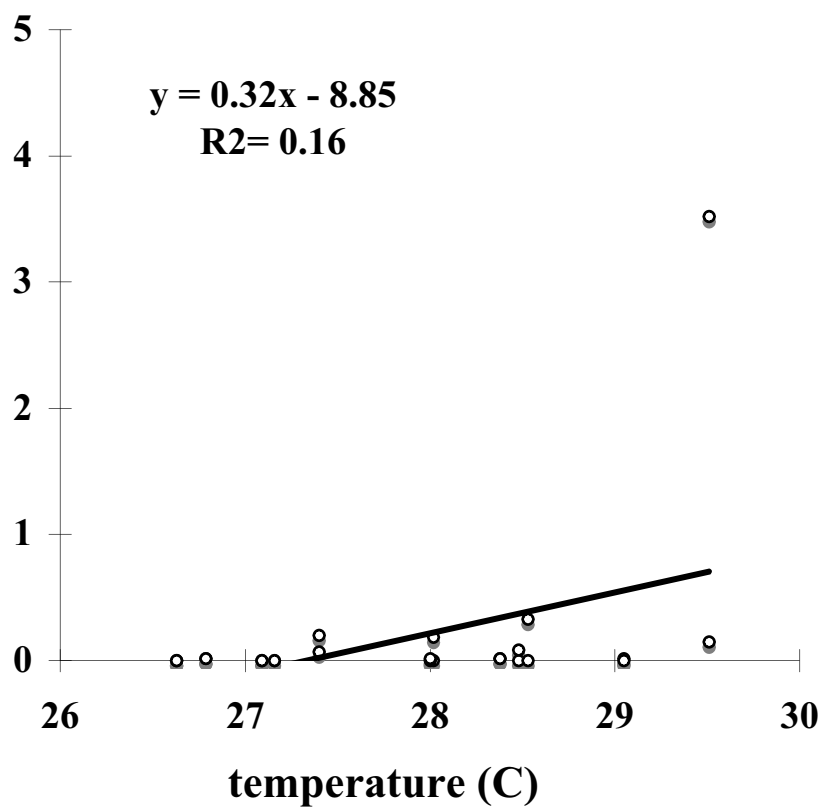
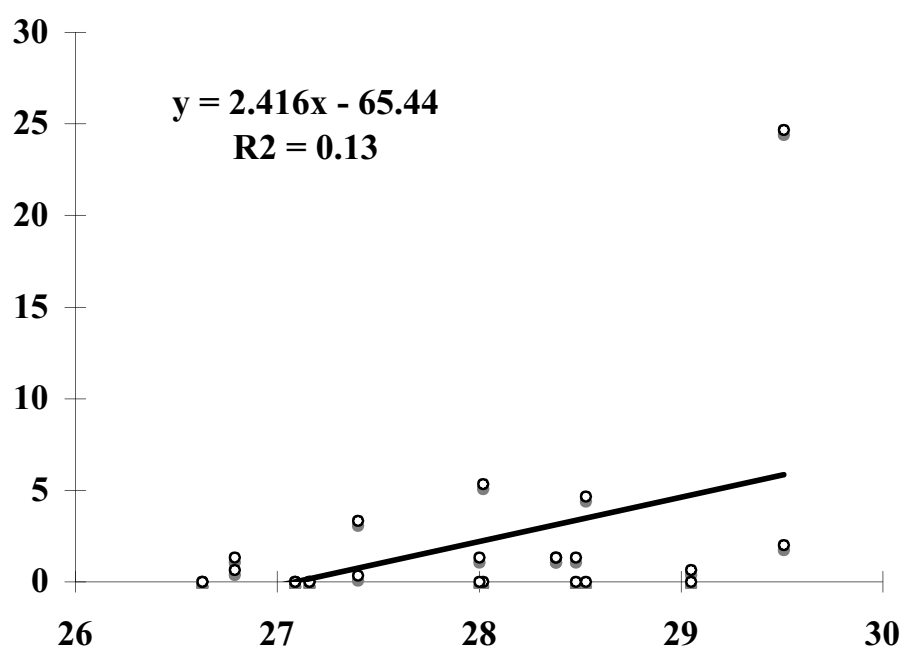


Figure4

