



รายงานวิจัยฉบับสมบูรณ์

โครงการ โครมาโตกราฟฟีแบบชั้นบางโดยใช้แผ่นเส้นใยนาโน
พอลิอะไครโลไนไตรล์เป็นวัสดุภาคคงที่

โดย

ดร.พิมลพรรณ เนียมกลาง

มิถุนายน 2561

สัญญาเลขที่ TRG5780161

รายงานวิจัยฉบับสมบูรณ์

โครงการโครมาโตกราฟีแบบชั้นบางโดยใช้แผ่นเส้นใยนาโนพอลิอะ
ไครโลไนไทรล์ เป็นวัสดุภาคคงที่

ดร.พิมลพรรณ เนียมกลาง

สาขาวิชาวิศวกรรมวัสดุ คณะวิศวกรรมศาสตร์

มหาวิทยาลัยเทคโนโลยีราชมงคลรัตนโกสินทร์

สนับสนุนโดยสำนักงานกองทุนสนับสนุนการวิจัยและมหาวิทยาลัย

เทคโนโลยีราชมงคลรัตนโกสินทร์

(ความเห็นในรายงานนี้เป็นของผู้วิจัย สกว. ไม่จำเป็นต้องเห็นด้วยเสมอไป)

Abstract

Project Code : TRG5780161

Project Title: Ultrathin-layer Chromatography Using an Electrospun Polyacrylonitrile Stationary Phase

Investigator : Pimolpun Niamlang, Department of materials engineering,
Faculty of Engineering, Rajamangala University of Technology Rattanakosin

E-mail Address : pimolpun.kam@rmutr.ac.th

Project Period : 48 months

Research in the miniaturization of planar chromatography led to various approaches in manufacturing ultrathin-layer chromatography (UTLC) layers of reduced thickness ($<50\text{ }\mu\text{m}$) along with smaller instrumentation, as targeted in Office Chromatography. This novel concept merges 3D print & media technologies with miniaturized planar chromatography to realize an all-in-one instrument, in which all steps of UTLC are automated and integrated in the same tiny device. In this context, the development of electrospun polyacrylonitrile (PAN) nanofiber phases was investigated as well as its performance. A nanofibrous stationary phase with fiber diameters of 150–225 nm and a thickness of ca. 25 μm was manufactured. Mixtures of water-soluble food dyes were printed on it using a modified office printer, and successfully separated to illustrate the capabilities of such UTLCmedia. The separation took 8 min for 30 mm and was faster (up to a factor of 2) than on particulate layers. The mean hRF values ranging from 25 to 90 for the five food dyes were well spread over the migration distance, with an overall reproducibility of 7% (mean %RSD over 5 different plates for 5 dyes). The individual mean plate numbers over 5 plates ranged between 8286 and 22,885 (mean of 11,722 over all 5 dyes). The single mean resolutions RS were between 1.7 and 6.5 (for the 5 food dyes over 5 plates), with highly satisfying reproducibilities (0.3 as mean deviation of RS). Using videodensitometry, different amounts separated in parallel led to reliable linear calibrations for each dye (sdv of 3.1–9.1% for peak heights and 2.4–9.3% for peak areas). Coupling to mass spectrometry via an elution head-based interface was successfully demonstrated for such ultrathin layers, showing several advantages such as a reduced cleaning process and a minimum zone distance. All these results underline the potential of electrospun nanofibrous phases to succeed as affordable stationary phase for quantitative UTLC.

Keywords: nanomaterials; mass spectrometry; planar chromatography

1. Executive summary

Thin-layer chromatography (TLC) was developed in the 1950s and widely used for a variety of applications including identification of drugs and toxic substances in biological fluids, monitoring water supplies for pesticides, analysis of pharmaceutical products, and evaluation of the flavor potential of plant materials [1]. Normal phase separations on silica gel 60 adsorbent are best established and most widely used in TLC [2, 3]. A substantial change came in the 1970s with the introduction of high-performance TLC (HPTLC) plates. Compared to TLC plates, HPTLC plates have thinner layers containing a smaller size of particles with a more homogeneous distribution, providing shorter migrations distances, faster separations, and lower reagent and mobile phase consumptions [2, 3].

Ultrathin-layer chromatographic (UTLC) plates were introduced in 2001 to improve the efficiency of given plates and adsorbents in terms of sensitivity, analysis times and amount of consumables [4, 5]. First UTLC plates were made by coating a glass substrate with a monolithic silica gel, creating a 10- μm thick adsorbent layer characterized by 1–2 μm macropores and 3–4 nm mesopores. Separations on UTLC plates were reported to be faster and required smaller reagent and sample volumes than on TLC and HPTLC plates. In most cases, UTLC plates had a lower limit of detection. In contrast to all these benefits, the separation number and resolution between zones were often worse due to a shorter migration distance and lower available specific surface area [5]. UTLC plates have been shown to provide a better interface in coupled TLC-mass spectrometry (MS), where the thinner adsorbent layer on UTLC plates improved the sensitivity of TLC-

atmospheric pressure matrix-assisted laser desorption ionization (AP MALDI)-MS by 10–100 times over HPTLC plates [6]. Binder materials may have an impact on such sensitive devices and on the efficiency of separations due to the introduction of heterogeneous interaction sites. Hence, it is advantageous that electrospinning of the stationary phases in UTLC allows the production of binder-free UTLC plates and gives the scientist control of stationary phase mat thicknesses and chemical functionality present using a minimal amount of materials (about 1 mL of polymer solution) [8, 9].

Though electrospinning of an polyacrylonitrile (PAN) nanofibrous stationary phase has already been shown [7], applications and MS hyphenations are rare. In this study, the electrospun PAN nanofiber mat was used and evaluated as stationary phase for UTLC. The performance of the application of a water-soluble food dye mixture by a modified office printer was investigated. After their successful separation, the zones were directly eluted into the mass spectrometer using a TLC-MS interface.

2. Experimental

2.1 Materials

Platinum used for scanning electron microscopy (SEM) was obtained from SPI-Chem (West Chester, PA, USA). Aluminum foil (50 μm thickness) was delivered by Korff, Oberbipp, Switzerland). PAN (ca. 55,500 Da average molecular weight, containing 8.6 % methyl acrylate comonomer, w/w) was obtained from Thai Acrylic Fibre, Lumpini Bangkok. Dimethylformamide (purity $\geq 99.8\%$) and methanol (purity $\geq 99.8\%$) were purchased from Sigma Aldrich, Buchs, Switzerland. Toluene (purity $\geq 99.8\%$) and HPTLC silica gel 60

aluminium foils and HPTLC plates silica gel 60 CN (cyano phase) were purchased from Merck, Darmstadt, Germany. Ammonium hydroxide (NH₃ 25 %, analytical grade) was obtained from VWR, Darmstadt, Germany. The following water-soluble food dyes were used: tartrazine (E 102; Carl Roth, Karlsruhe, Germany), chrysoine resorcinol (E 103; Sigma Aldrich) quinoline yellow (E 104; Ringe and Kuhlmann, Hamburg, Germany), fast yellow AB (E 105, purity ≥ 95 %; Sigma Aldrich), orange GGN (E 111; Schuhmann and Son, Karlsruhe, Germany), erythrosine (E 127, purity >85 %; Ringe and Kuhlmann) and brilliant blue FCF (E133, purity >80 %; Schuhmann and Son).

2.2 Fabrication of electrospun PAN nanofiber phases

The spinning solution of 12 wt% was prepared by dissolving the PAN in dimethylformamide under mechanical stirring for about 1 h at room temperature (25 ± 1 °C). The solution was then loaded into a standard 10-mL glass syringe. A 20-gauge, blunt-ended stainless steel needle (outer diameter of 0.91 mm) was used as nozzle. Both the syringe and the needle were tilted about 45° from a horizontal baseline. A sheet of aluminum foil was wrapped around a rotating cylinder (outer diameter of ca. 15 cm and rotational speed of ca. 1000 rpm) and placed at a fixed distance of 10 cm from the needle tip. The needle was connected to the emitting electrode of positive polarity of a ES30P-5W power supply (Gamma High Voltage Research, Ormond Beach, FL, USA). The electrical potential was fixed at 16 kV. The electrospun PAN nanofiber mat was collected continuously for 90 min. Prior to further use, this fiber mat was placed *in vacuo* at room temperature (25 ± 1 °C) at least 24 hours to remove the solvent [10, 11].

The fiber mat was cut from the middle part of the aluminum foil into the size of 3 cm x 4 cm to ensure a uniform thickness of the cut parts used as stationary phase. The morphology of the electrospun PAN nanofiber phase was inspected by a JSM-6400 scanning electron microscope (JEOL, Tokyo, Japan). Each specimen was coated with a thin layer of platinum prior to the SEM observation. The diameters of the individual fiber segments within each specimen were measured directly from the SEM images using ImageJ software (National Institutes of Health, Bethesda, MD, USA). No less than fifty diameters were determined on different fiber segments and the average value was calculated.

2.3. Standard solutions

For a standard mixture, five water-soluble food dyes (25 mg each of E127 and E133; 50 mg each of E104, E111 and E102) were dissolved in a 10 mL measuring flask with methanol and filled up to the mark with methanol. For MS, individual methanolic dye solutions were used (2.5 or 5 $\mu\text{g}/\mu\text{L}$).

2.4. Application

The standard mixture solution was printed using a modified (almost completely demounted) Canon printer (Pixma iP 3000 Bubble Jet printer; Canon, Krefeld, Germany) [12]. The electrospun PAN nanofiber phase of 3 cm x 4 cm was loaded onto the CD-tray of the printer. The bands were printed as 3 mm bands, normally in band widths between 0.1 - 0.3 mm. The print patterns were drawn in vector illustration software (CorelDraw, Corel, Unterschleißheim, Germany) with a distance from the lower edge of 5 mm, a

distance from the left side of 5 mm, and an absolute distance between bands of 1.5 mm.

For 5-point calibration, 2, 3, 4, 5 and 6 μL of the standard mixture solution were applied on the plate (band heights were 0.2 mm to 0.6 mm).

2.5. Chromatography

Development was performed in a homemade micro-chamber (4.5 cm \times 1.5 cm \times 5.5 cm, height \times width \times length) made of glass with a mixture of methanol, toluene and ammonium hydroxide 25 % (40:57:3, V/V/V). The migration distance was 30 mm from the lower plate edge and the migration time was 8 min. Thereafter, the electrospun PAN nanofiber phase was dried in a flow of air for 10 s.

2.6. Documentation and video-evaluation

For documentation of the tiny electrospun PAN nanofiber phase, the images were captured using a high resolution flat bed scanner (CanoScan 9000F, Canon, Krefeld, Germany). The VideoScan software (CAMAG, Muttenz, Switzerland) was used for linear calibration via peak area and peak height. The image taken was processed using a Savitsky Golay filter (order 2, width of mostly 17), lowest slope as baseline correction mode, and different filters for evaluation. The Sorbfil TLC Video densitometer (Jsc Sorbpolymer, Nicosia, Cyprus) was also used to evaluate spot areas on a TLC plate image with construction of a densitogram on the difference of track intensity from background intensity.

2.7. Identification by electrospray ionization mass spectrometry (ESI-MS)

For recording of ESI-MS, the electrospun PAN nanofiber phase was online eluted using the TLC-MS Interface (CAMAG) equipped with the 4-mm circular elution head. This elution-head based interface was coupled to the electrospray ionization (ESI) interface of the single-quadrupole mass spectrometer (G1956B MSD, Agilent, Waldbronn, Germany). In the transfer tube from the interface to the ESI source, an inline filter (A-356 containing a 0.5 μm PEEK-Frit Blue UP A-703; both Upchurch Scientific, Techlab, Erkerode, Germany) was integrated. The selected zone on the fiber mat was eluted with methanol at a flow rate of 50 $\mu\text{L}/\text{min}$. The MS system was operated in the full scan mode between m/z 110 and m/z 800 with the following parameters: capillary voltage \pm 4 kV, nebulizer gas pressure 40 psig, drying gas temperature 300°C, drying gas flow rate 10 L/min, fragmentation voltage 100 V, gain 1, threshold 10 and step size 0.2. Data processing for MS measurements was carried out with LC/MSD ChemStation software Rev. B. 02.01-SR2 (Agilent).

3. Results and discussion

3.1. Characterization of electrospun PAN nanofibers

The electrospun PAN nanofiber phases were fabricated using a 12 wt% PAN solution in dimethylformamide according to the procedure reported previously [11]. The mean diameter ($n = 50$) of the individual fibers was $224 \text{ nm} \pm 65 \text{ nm}$ and the mean thickness ($n = 50$) $26 \text{ }\mu\text{m} \pm 3 \text{ }\mu\text{m}$. The morphology of the nanofiber phase was uniform (Figure 1). The cross-sections of the fibers were round and their surfaces smooth. The resulting nanofiber phases (without binder) were mechanically stable and suited for the UTLC work flow.

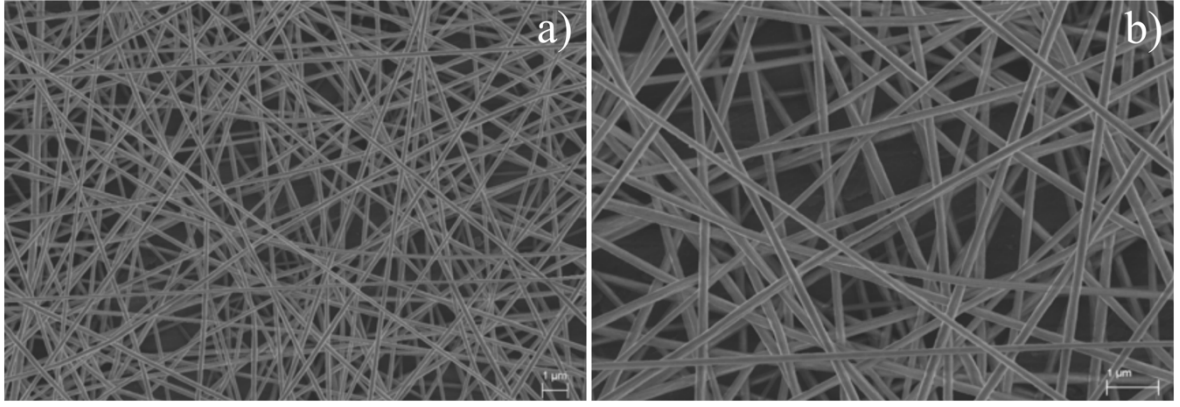


Figure 1. Selected SEM images of an electrospun PAN nanofiber phase a) 5000x and b) 10000x .

3.2. Comparison of migration velocities on three different phases

The mean migration velocity of the mobile phase on electrospun PAN nanofibers was compared with that on two commercially available HPTLC silica gel 60 and cyano phases. The Lucas-Washburn equation [13-15] (Equation 1) was used to describe the liquid transportation through porous media as follows,

$$Z_f^2 = (\gamma R T \cos \theta) / 2 \eta \quad (1)$$

where Z_f is the migration distance of the solvent front, T the migration time, γ the surface tension of the mobile phase, θ the contact angle of the mobile phase with the stationary phase, R the effective pore radius and η the viscosity of the mobile phase [13]. Heptane was selected as mobile phase in this study due to its contact angle of 0° with the electrospun PAN nanofiber phase and HPTLC cyano phase. The obtained linear regressions fit well with the Lucas-Washburn equation ($r^2 > 0.99$), showing that the electrospun PAN nanofiber phase had the fastest mobile phase migration (Figure 2).

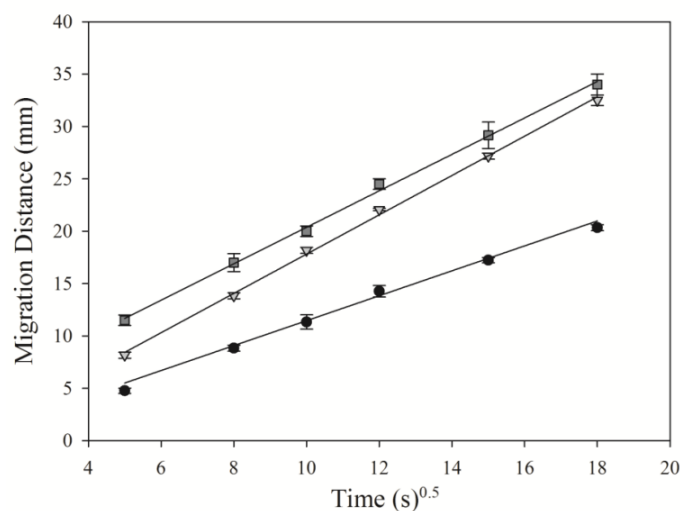


Figure 2. Comparison of mean mobile phase velocities with SD ($n = 3$) on HPTLC foil silica gel 60 (●), HPTLC plate silica gel CN (▼) and electrospun PAN nanofiber phase (■).

3.3. Efficiency and performance of the electrospun PAN nanofiber phase

The dye volumes applied as 3-mm bands on the electrospun PAN nanofiber phase using a modified Canon printer [12] were estimated to range between 3 and 9 nL/band (dependent on the band heights between 0.2 and 0.6 mm), which was equivalent to amounts of 8 to 24 ng/band [16, 17]. For their separation, different solvent selectivities were investigated. Toluene showed the best selectivity and was mixed with methanol to adjust the elution strength. The ratios 1:9 to 1:1 were investigated with additions of acetic acid or ammonium hydroxide 25%. The development with a mixture of methanol, toluene and ammonium hydroxide 25% (40:57:3, V/V/V) was found to separate sufficiently the 5 water-soluble food dyes (Figure 3). The migration time was 8 min.

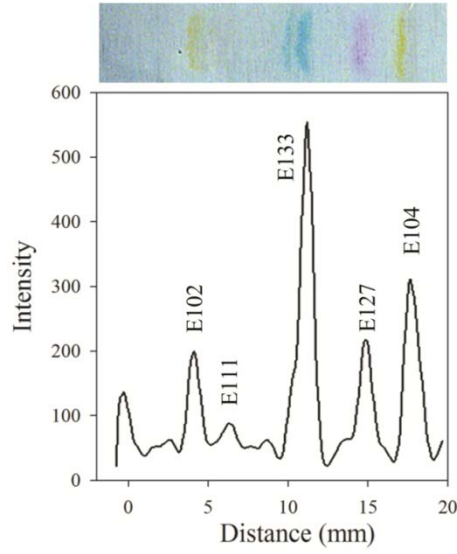


Figure 3. Videodensitogram and chromatogram showing the separation of a water-soluble food dye mixture on the electrospun PAN nanofiber phase.

For 5 separations on the electrospun PAN nanofiber phase, the mean hR_F value ($R_F \times 100$), the mean plate number N (Equation 2) and the mean resolution R_S between adjacent zones (Equation 3) were calculated for each water-soluble food dye. In Equation 2, Z_S is the migration distance of a peak and w is its peak width on the basis. In Equation 3, Z_{S1} and Z_{S2} are the migration distances and w_1 and w_2 the peak widths on the basis of the two adjacent peaks 1 and 2, respectively.

$$N = 16 (Z_S/w)^2 \quad (2)$$

$$R_S = 2 (Z_{S2} - Z_{S1}) / (w_2 + w_1) \quad (3)$$

The mean hR_F values of the food dyes ranged from 25 to 90 and were well spread over the migration distance (Table 1). Their mean deviation was 7 (over all 5 food dyes on 5 different plates), showing single mean hR_F deviations between 1 and 16. The overall mean plate number (over all 5 food dyes for 5 plates) was 11722 (single mean N

between 8286 and 22885), which was highly encouraging. The overall mean resolution (over all 5 food dyes for 5 plates) was 4.5 (single mean R_S between 1.7 and 6.5) with highly satisfying reproducibilities (0.3 as mean deviation of R_S).

Table 1. Mean hR_F values ($n = 5$) and its precision for five separations as well as the mean plate number N and mean resolution of water-soluble food dyes on electrospun PAN nanofiber phases; performance of linear calibrations for 4 standard levels.

Food dye	Mean hR_F $\%$ RSD ($n = 5$)		Mean N	Linear calibration		Food dyes	Mean R_S SD ($n = 5$)	
				Peak area $\%$ RSD	Peak height $\%$ RSD			
E 102	25	1	8345	6.0	9.3	E 102/111	1.7	0.2
E 111	33	4	8286	*	*	E 111/133	6.5	0.2
E 133	57	14	22885	3.1	2.4	E 133/127	4.6	0.6
E 127	73	16	9596	4.5	5.7	E 127/104	5.2	0.2
E 104	90	1	9497	9.1	4.5			
Mean	25-90	7	11722	5.7	5.5	Mean	4.5	0.3

*E111 not determinable, as first two standard levels too low

For videodensitometry, the visible image was loaded into the VideoScan software and the assigned tracks were transformed into densitograms. For conversion, the grey scale pixels within the lines of a track were summed, which generated one data point. The baseline was automatically set using the lowest slope mode. Electronic filters were used to isolate different colors. The red filter was chosen for evaluation of the blue dye (E 133) as well as the blue filter for evaluation of the red (E 127) and yellow dyes (E 102,

E 104 and E 111). The digital evaluation of the yellow dyes was more challenging compared to the blue or red dyes, as those yellow dyes were more difficult to see on the white layer background. On the novel electrospun PAN nanofiber phase, the linear calibrations of water-soluble food dyes obtained by video-evaluation resulted in precisions of the linear calibrations of 3.1 - 9.1% (mean %RSD 5.7 %) for peak heights and 2.4 - 9.3% (mean %RSD 5.5 %) for peak areas (Table 1). Hence, the good efficiency and performance of the electrospun PAN nanofiber phase for quantitative studies on such novel layer materials was successfully demonstrated.

3.4. Identification by mass spectrometry

For the first time, ESI-MS spectra were recorded from the electrospun PAN nanofiber phases using an elution head-based interface (Figure 4C) and compared to those mass spectra obtained from HPTLC foils silica gel 60 (Figures 4A *versus* 4B). Eluents containing methanol and its mixture with water were tested for elution. Using methanol the highest signal to noise ratio was obtained and a water addition for elution of the water-soluble dyes was not indicated. After lifting the elution head, the still wet layer material was not clogging within the cutting edge and removed from the carrier like known for particulate TLC/HPTLC adsorbents. The cutting edge of the elution head only caused an imprint on the flexible aluminum foil carrier after elution of the dyes from the electrospun PAN nanofiber phase (Figure 4D). The elastic fiber mat was still intact and not destroyed by the pressure of the elution head onto the fibers. The elution head cleaning between the zone elutions was omitted because on the one hand a crossover of dye traces was not evident in the mass spectra for the given small amounts of ca. 20 ng/band each eluted

into the MS and on the other hand no clogging of the cutting edge of the elution head occurred.

Unambiguous mass signals were obtained after elution of the small analyte amounts (about 20 ng/band for all dyes) into the MS, exemplarily shown for E 105, E 111, E 127 and E 133. The total ion current (TIC) elution profiles were clearly visible in the chronogram and its respective mass spectra showed pronounced base peaks in the negative ion mode (Table 2). In the positive ion mode, the mass signals were marginal. For all dyes investigated, the twofold deprotonated $[M-2H]^{2-}$ or desodiated molecules $[M-2Na]^{2-}$ were the dominant and characteristic base peaks. In the mass spectrum of, e.g., E 127, the electrospun PAN nanofiber background was clearly visible. At low amounts and/or elution/ionization properties of an analyte, the phase background is more pronounced in the mass spectrum.

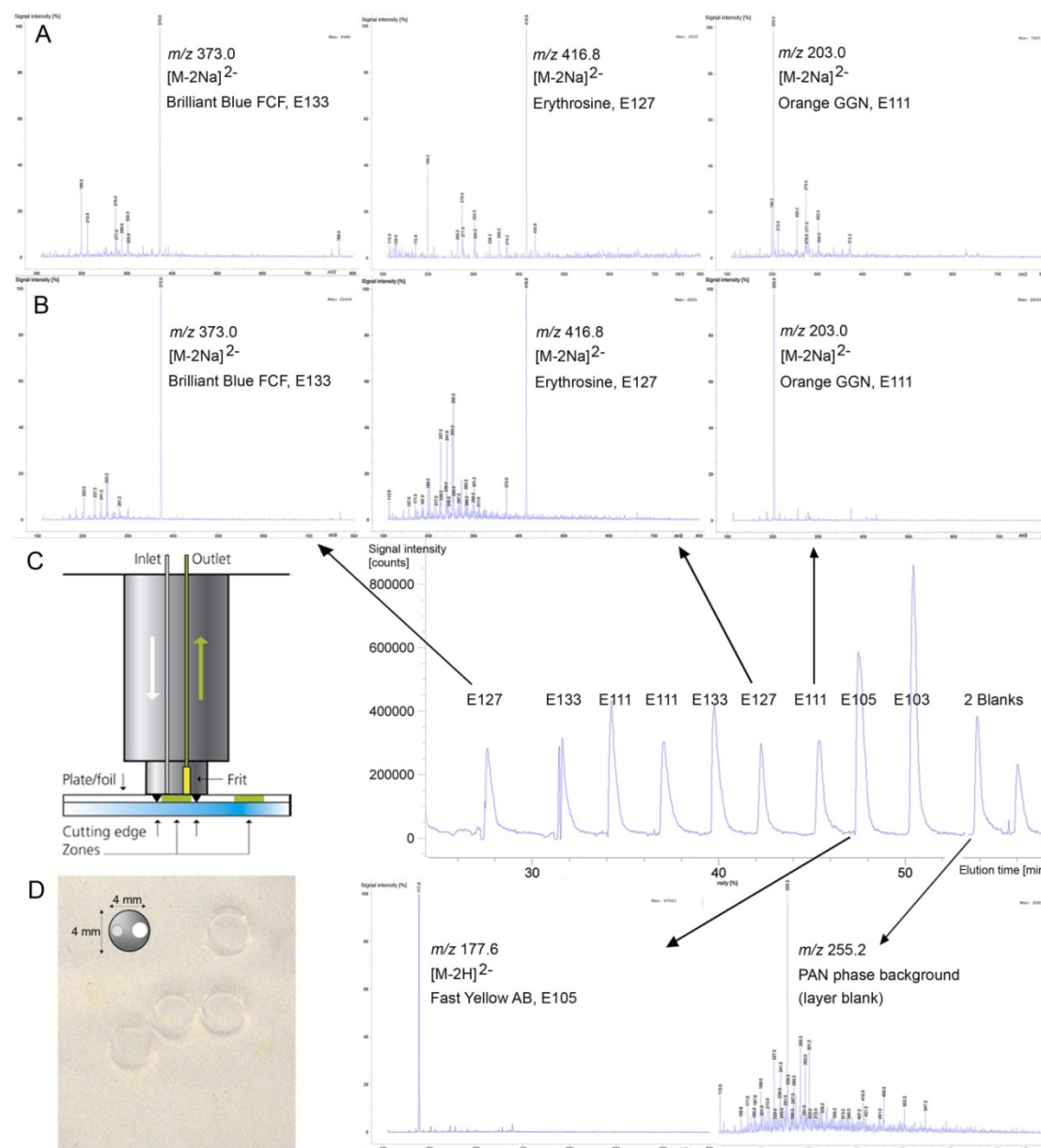
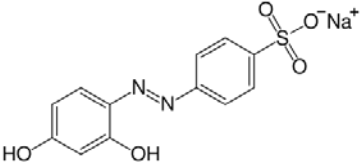
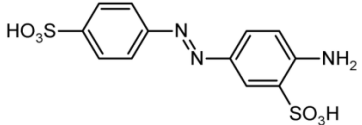
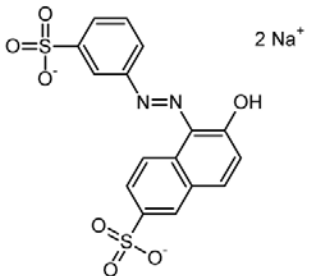
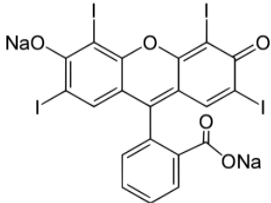
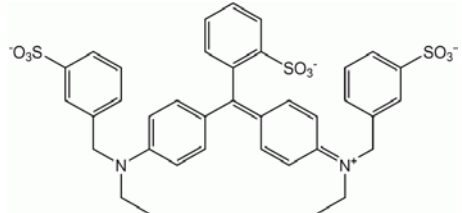


Figure 4. Comparison of HPTLC-ESI-MS spectra obtained from HPTLC foils silica gel 60, exemplarily shown for E 133, E 127 and E 111 (A), with UTLC-ESI-MS spectra recorded from electrospun PAN nanofiber phases (B; shown for the same analytes; below right: chronogram of elution profiles and mass spectra of E 105 and PAN phase background); scheme of the elution head (C) and some fiber mat imprints after elution on the electrospun PAN nanofiber phase (D).

Table 2. Structure formulae of the food dyes, their molecular weights and mass signals on HPTLC foils silica gel 60 *versus* electrospun PAN nanofiber phases.

Structure formula*	Food dye (E number)	Molecular weight (g/mol)	<i>m/z</i> on HPTLC silica gel 60	<i>m/z</i> on electrospun PAN nanofibers
	Chrysoine resorcinol (E 103)	316.3	n.d.	293.0 [M-Na] ⁻
	Fast Yellow AB (E 105)	357.4	n.d.	177.6 [M-2H] ²⁻
	Orange GGN (E 111)	452.4	203.0 [M-2Na] ²⁻	203.0 [M-2Na] ²⁻
	Erythrosine (E 127)	879.9	416.8 [M-2Na] ²⁻	416.8 [M-2Na] ²⁻
	Brilliant Blue FCF (E 133)	792.9	373.0 [M-2Na] ²⁻	373.0 [M-2Na] ²⁻

n.d. not determined, *www.wikipedia.org

The 4-mm circular elution head was used for elution of the dyes directly into the MS. However, a circular elution head of 2 mm diameter (not available for the study) instead of 4 mm would have been suited better. The many advantages of recording mass spectra

from electrospun layers reported in a recent study were confirmed [11], *i.e.* the intact layer material after elution, the omission of the elution head cleaning and the good detectability.

4. Conclusions

The electrospun PAN nanofibers were used as stationary phase for UTLC. The application of 5 water-soluble food dyes on the electrospun PAN nanofibrous phase was successfully demonstrated using a modified office printer. Linear 5-point calibrations of each dye were obtained after separation of 5 tracks with different amounts of food dyes. The obtained results suggested that the electrospun PAN nanofibrous phase possess potential for use as stationary phase for UTLC. Furthermore, UTLC-ESI-MS spectra were successfully recorded from the electrospun PAN nanofiber phases after development, whereby the elution head cleaning process after each elution was skipped.

Acknowledgements: The authors acknowledge research support from TRF Grant for New Researcher TRG5780161 for material and facilitative support from The Petroleum and Petrochemical College (PPC, Chulalongkorn University) and Rajamangala University of Technology Rattanakosin.

References

1. Poole, C.F. Thin-layer chromatography: challenges and opportunities, *J. Chromatogr. A*, **2003**, *1000*, 963-984.

2. Poole, C.F. Planar chromatography at the turn of the century, *J. Chromatogr. A*, 1999, **856**, 399-427.
3. Siouffi, A. From Paper to Planar, *60 Years of Thin Layer Chromatography Separation and Purification Reviews*, **2005**, *34*, 155-180.
4. Hauck, H.E.; Bund, O.; Fischer, M.; Schulz, M. Ultra-Thin Layer Chromatography (UTLC)—A New Dimension in Thin-Layer Chromatography, *J. Planar. Chromatogr.*, **2001**, *14*, 234–236.
5. Hauck, H.E.; Schulz, M. Ultrathin-Layer Chromatography, *J. Chromatogr. Sci.*, **2002**, *40*, 550-552.
6. Salo, P.K.; Salomies, H.; Harju, K.; Ketola, R.A.; Kotiaho, T.; Yli-Kauhaluoma, J.; Kostianen, R. Analysis of Small Molecules by Ultra Thin-Layer Chromatography-Atmospheric Pressure Matrix-Assisted Laser Desorption/Ionization Mass Spectrometry, *J. Am. Soc. Mass Spectrom.*, **2005**, *16*, 906-915.
7. Clark, J.E.; Olesik, S.V. Technique for Ultrathin Layer Chromatography Using an Electrospun, Nanofibrous Stationary Phase, *Anal. Chem.*, **2009**, *81*, 4121–4129.
8. Bezuidenhout, L.W.; Brett, M.J. Ultrathin layer chromatography on nanostructured thin films, *J. Chromatogr. A*, **2008**, *1183*, 179–185.
9. Clark, J.E.; Olesik, S.V. Electrospun glassy carbon ultra-thin layer chromatography devices, *J. Chromatogr. A*, **2010**, *1217*, 4655-4662.
10. Sutasinpromprae, J.; Jitjaicham, S.; Nithitanakul, M.; Meechaisue, C.; Supaphol, P. Preparation and characterization of ultrafine electrospun polyacrylonitrile fibers and their subsequent pyrolysis to carbon fibers, *Polym. Int.*, **2006**, *55*, 825-833.

11. Kampalanonwat, P.; Supaphol, P.; Morlock, G. Electrospun nanofiber layers with incorporated photoluminescence indicator for chromatography and detection of ultraviolet-active compounds, *J. Chromatogr. A*, **2013**, *1299*, 110-117.
12. Häbe, T.; Morlock, G. Office chromatography: precise printing of sample solutions on miniaturized thin-layer phases and utilization for scanning direct analysis in real time mass spectrometry, *J. Chromatogr. A*, **2015**, *1413*, 127-134.
13. Clark, J.E.; Olesik, S.V.; Technique for Ultrathin Layer Chromatography Using an Electrospun, Nanofibrous Stationary Phase, *Anal. Chem.*, **2009**, *81*, 4121-4129.
14. Washburn, E.W. The dynamics of capillary flow, *Phys. Rev.*, **1921**, *17*, 273-283.
15. Good, R.J.; Lin, N.J. Rate of penetration of a fluid into a porous body., *J. Colloid Interface. Sci.*, **1976**, *54*, 52-58.
16. Morlock, G.; Stiefel, C.; Schwack W. Efficacy of a Modified Printer for Application of Reagents in Planar Chromatography. *J. Liq. Chromatogr. Relat. Technol.*, **2007**, *30*, 2171-2184
17. Morlock, G.; Oellig, C.; Bezuidenhout, L.W.; Brett, M.J.; Schwack, W. Miniaturized Planar Chromatography Using Office Peripherals. *Anal. Chem.*, **2010**, *82*, 2940-2946



Article

Performance of Electropun Polyacrylonitrile Nanofibrous Phases, Shown for the Separation of Water-Soluble Food Dyes via UTLC-Vis-ESI-MS

Pimolpun Niamlang ^{1,2} , Pitt Supaphol ³ and Gertrud E. Morlock ^{2,*}

¹ Department of Materials Engineering, Faculty of Engineering, Rajamangala University of Technology Rattanakosin, 96 Mu 3 Phutthamonthon Sai 5 Road, Salaya, Phutthamonthon, Nakorn Pathom 73170, Thailand; pimolpun.kam@rmutr.ac.th

² Institute of Nutritional Science, Chair of Food Science, Justus Liebig University Giessen, Heinrich-Buff-Ring 26-32, 35392 Giessen, Germany

³ The Petroleum and Petrochemical College, Chulalongkorn University, Bangkok 10330, Thailand; pitt.s@chula.ac.th

* Correspondence: gertrud.morlock@uni-giessen.de; Tel.: +49-641-99-39141

Received: 3 July 2017; Accepted: 6 August 2017; Published: 10 August 2017

Abstract: Research in the miniaturization of planar chromatography led to various approaches in manufacturing ultrathin-layer chromatography (UTLC) layers of reduced thickness (<50 µm) along with smaller instrumentation, as targeted in Office Chromatography. This novel concept merges 3D print & media technologies with miniaturized planar chromatography to realize an all-in-one instrument, in which all steps of UTLC are automated and integrated in the same tiny device. In this context, the development of electrospun polyacrylonitrile (PAN) nanofiber phases was investigated as well as its performance. A nanofibrous stationary phase with fiber diameters of 150–225 nm and a thickness of ca. 25 µm was manufactured. Mixtures of water-soluble food dyes were printed on it using a modified office printer, and successfully separated to illustrate the capabilities of such UTLC media. The separation took 8 min for 30 mm and was faster (up to a factor of 2) than on particulate layers. The mean hR_F values ranging from 25 to 90 for the five food dyes were well spread over the migration distance, with an overall reproducibility of 7% (mean %RSD over 5 different plates for 5 dyes). The individual mean plate numbers over 5 plates ranged between 8286 and 22,885 (mean of 11,722 over all 5 dyes). The single mean resolutions R_S were between 1.7 and 6.5 (for the 5 food dyes over 5 plates), with highly satisfying reproducibilities (0.3 as mean deviation of R_S). Using videodensitometry, different amounts separated in parallel led to reliable linear calibrations for each dye (sdv of 3.1–9.1% for peak heights and 2.4–9.3% for peak areas). Coupling to mass spectrometry via an elution head-based interface was successfully demonstrated for such ultrathin layers, showing several advantages such as a reduced cleaning process and a minimum zone distance. All these results underline the potential of electrospun nanofibrous phases to succeed as affordable stationary phase for quantitative UTLC.

Keywords: nanomaterials; mass spectrometry; planar chromatography; ultrathin-layer chromatography; quantification; electrospinning process

1. Introduction

Thin-layer chromatography (TLC) was developed in the 1950s and widely used for a variety of applications including the identification of drugs and toxic substances in biological fluids, the monitoring of water supplies for pesticides, the analysis of pharmaceutical products, and the evaluation of the flavor potential of plant materials [1]. Normal phase separations on silica gel 60 adsorbent are best established and most widely used in TLC [2,3]. A substantial change came in the 1970s with the introduction of

high-performance TLC (HPTLC) plates. Compared to TLC plates, HPTLC plates have thinner layers containing a smaller size of particles with a more homogeneous distribution, providing shorter migrations distances, faster separations, and lower reagent and mobile phase consumptions [2,3].

Ultrathin-layer chromatographic (UTLC) plates were introduced in 2001 to improve the efficiency of given plates and adsorbents in terms of sensitivity, analysis times, and the amount of consumables [4,5]. First, UTLC plates were made by coating a glass substrate with a monolithic silica gel, creating a 10- μm thick adsorbent layer characterized by 1–2 μm macropores and 3–4 nm mesopores. Separations on UTLC plates were reported to be faster and required smaller reagent and sample volumes than on TLC and HPTLC plates. In most cases, UTLC plates had a lower limit of detection. In contrast to all these benefits, the separation number and resolution between zones were often worse due to a shorter migration distance and lower available specific surface area [5]. UTLC plates have been shown to provide a better interface in coupled TLC-mass spectrometry (MS), where the thinner adsorbent layer on UTLC plates improved the sensitivity of TLC-atmospheric pressure matrix-assisted laser desorption ionization (AP MALDI)-MS by 10–100 times over HPTLC plates [6]. Binder materials may have an impact on such sensitive devices and on the efficiency of separations due to the introduction of heterogeneous interaction sites. Hence, it is advantageous that electrospinning of the stationary phases in UTLC allows the production of binder-free UTLC plates and gives the scientist control of stationary phase mat thicknesses and chemical functionality present using a minimal amount of materials (about 1 mL of polymer solution) [7–9].

Though electrospinning of an polyacrylonitrile (PAN) nanofibrous stationary phase has already been shown [7], applications and MS hyphenations are rare. In this study, the manufactured electrospun PAN nanofiber mat was used and evaluated as stationary phase for UTLC. The performance of the application of a water-soluble food dye mixture by a modified office printer was investigated. Per se dyes are ideal analytes for evaluation of manufactured plates and for their optimization. Following method development and successful separation, the mass spectra of the dyes on such nanofibrous stationary phases were recorded. The zones were directly eluted into the mass spectrometer using a TLC-MS interface.

2. Experimental

2.1. Materials

Platinum used for scanning electron microscopy (SEM) was obtained from SPI-Chem (West Chester, PA, USA). Aluminum foil (with a thickness of 50 μm) was delivered by Korff, Oberbipp, Switzerland. PAN (ca. 55,500 Da average molecular weight, containing 8.6% methyl acrylate comonomer, *w/w*) was obtained from Thai Acrylic Fibre, Lumpini Bangkok, Thailand. Dimethylformamide (purity $\geq 99.8\%$) and methanol (purity $\geq 99.8\%$) were purchased from Sigma Aldrich, Buchs, Switzerland. Toluene (purity $\geq 99.8\%$) and HPTLC silica gel 60 aluminum foils and HPTLC plates silica gel 60 CN (cyano phase) were purchased from Merck, Darmstadt, Germany. Ammonium hydroxide (NH_3 25%, analytical grade) was obtained from VWR, Darmstadt, Germany. The following water-soluble food dyes were used: tartrazine (E 102; Carl Roth, Karlsruhe, Germany), chrysoine resorcinol (E 103; Sigma Aldrich) quinoline yellow (E 104; Ringe and Kuhlmann, Hamburg, Germany), fast yellow AB (E 105, purity $\geq 95\%$; Sigma Aldrich), orange GGN (E 111; Schuhmann and Son, Karlsruhe, Germany), erythrosine (E 127, purity $> 85\%$; Ringe and Kuhlmann) and brilliant blue FCF (E 133, purity $> 80\%$; Schuhmann and Son).

2.2. Fabrication of Electrospun PAN Nanofiber Phases

The spinning solution of 12 wt % was prepared by dissolving the PAN in dimethylformamide under mechanical stirring for about 1 h at room temperature (25 ± 1 °C). The solution was then loaded into a standard 10 mL glass syringe. A 20-gauge, blunt-ended stainless steel needle (an outer diameter of 0.91 mm) was used as nozzle. Both the syringe and the needle were tilted about 45° from a horizontal baseline. A sheet of aluminum foil was wrapped around a rotating cylinder (an outer diameter of ca. 15 cm and a rotational speed of ca. 1000 rpm) and placed at a fixed distance of 10 cm from the needle

tip. The needle was connected to the emitting electrode of positive polarity of an ES30P-5W power supply (Gamma High Voltage Research, Ormond Beach, FL, USA). The electrical potential was fixed at 16 kV. The electrospun PAN nanofiber mat was collected continuously for 90 min. Prior to further use, this fiber mat was placed in vacuo at room temperature (25 ± 1 °C) at least 24 h to remove the solvent [10,11].

The fiber mat was cut from the middle part of the aluminum foil into the size of 3 cm \times 4 cm to ensure a uniform thickness of the cut parts used as stationary phase. The morphology of the electrospun PAN nanofiber phase was inspected by a JSM-6400 scanning electron microscope (JEOL, Tokyo, Japan). Each specimen was coated with a thin layer of platinum prior to the SEM observation. The diameters of the individual fiber segments within each specimen were measured directly from the SEM images using ImageJ software (National Institutes of Health, Bethesda, MD, USA). No fewer than 50 diameters were determined on different fiber segments and the average value was calculated.

2.3. Standard Solutions

For a standard mixture, five water-soluble food dyes (25 mg each of E 127 and E 133; 50 mg each of E 104, E 111 and E 102) were dissolved in a 10 mL measuring flask with methanol and filled up to the mark with methanol (2.5 $\mu\text{g}/\mu\text{L}$). For MS, individual methanolic dye solutions were used (2.5 or 5.0 $\mu\text{g}/\mu\text{L}$).

2.4. Application

The standard mixture solution was printed using a modified (almost completely demounted) Canon printer (Pixma iP 3000 Bubble Jet printer; Canon, Krefeld, Germany) [12]. The electrospun PAN nanofiber phase of 3 cm \times 4 cm was loaded onto the CD tray of the printer. The bands were printed as 3 mm bands, normally in band widths between 0.1 and 0.3 mm. The print patterns were drawn in vector illustration software (CorelDraw, Corel, Unterschleißheim, Germany) with a distance from the lower edge of 5 mm, a distance from the left side of 5 mm, and an absolute distance between bands of 1.5 mm. For calibration, 3–9 nL/band of the standard mixture solution were applied on the plate (band heights were 0.2 mm to 0.6 mm).

2.5. Chromatography

Development was performed in a homemade micro-chamber (4.5 cm \times 1.5 cm \times 5.5 cm, height \times width \times length) made of glass with a mixture of methanol, toluene and ammonium hydroxide 25% (40:57:3, v/v/v). The migration distance was 30 mm from the lower plate edge and the migration time was 8 min. Thereafter, the electrospun PAN nanofiber phase was dried in a flow of air for 10 s.

2.6. Documentation and Videoevaluation

For documentation of the tiny electrospun PAN nanofiber phase, the images were captured using a high-resolution flatbed scanner (CanoScan 9000F, Canon, Krefeld, Germany). The VideoScan software (CAMAG, Muttenz, Switzerland) was used for linear calibration via peak area and peak height. The respective image taken was processed using a Savitsky Golay filter (order 2 and width of mostly 17), the lowest slope as the baseline correction mode, and different filters for evaluation. The Sorbfil TLC Videodensitometer (Jsc Sorbpolymer, Nicosia, Cyprus) was also used to evaluate spot areas on a TLC plate image with the construction of a densitogram based on the difference between the track intensity and the background intensity.

2.7. Characterization by Electrospray Ionization Mass Spectrometry (ESI-MS)

For the recording of ESI-MS, the electrospun PAN nanofiber phase was eluted online using the TLC-MS Interface (CAMAG) equipped with the 4 mm circular elution head. This elution head-based interface was coupled to the electrospray ionization (ESI) interface of the single-quadrupole mass

spectrometer (G1956B MSD, Agilent, Waldbronn, Germany). In the transfer tube from the interface to the ESI source, an inline filter (A-356 containing a 0.5 μm PEEK-Frit Blue UP A-703; both Upchurch Scientific, Techlab, Erkerode, Germany) was integrated. The selected zone on the fiber mat was eluted with methanol at a flow rate of 50 $\mu\text{L}/\text{min}$. The MS system was operated in full scan mode between m/z 110 and m/z 800 in the negative or positive ionization mode with the following parameters: capillary voltage: $-/+$ 4 kV; nebulizer gas pressure: 40 psig; drying gas temperature: 300 $^{\circ}\text{C}$; drying gas flow rate: 10 L/min; fragmentation voltage: 100 V; gain: 1; threshold: 10; step size: 0.2. Data processing for MS measurements was carried out with LC/MSD ChemStation software Rev. B. 02.01-SR2 (Agilent, Santa Clara, CA, USA).

3. Results and Discussion

3.1. Characterization of Electrospun PAN Nanofibers

The electrospun PAN nanofiber phases were fabricated using a 12 wt % PAN solution in dimethylformamide according to the procedure reported previously [11]. The mean diameter ($n = 50$) of the individual fibers was 224 ± 65 nm, and the mean thickness ($n = 50$) was 26 ± 3 μm . The morphology of the nanofiber phase was uniform (Figure 1). The cross-sections of the fibers were round, and their surfaces smooth. The resulting nanofiber phases (without binder) were mechanically stable (like tights) and suited for the UTLC workflow.

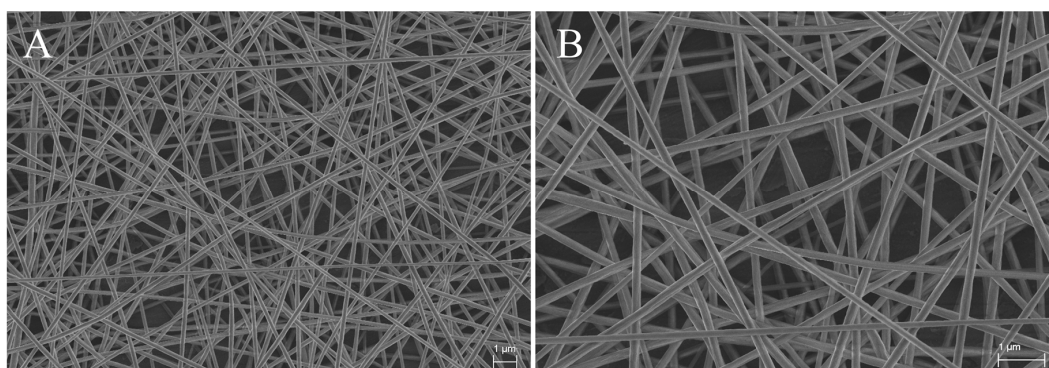


Figure 1. Selected SEM images of a typical electrospun PAN nanofiber phase taken at a magnification of 5000 \times (A) and 10,000 \times (B).

3.2. Comparison of Migration Velocities on Three Different Phases

The mean migration velocity of the mobile phase on electrospun PAN nanofibers was compared with that on two commercially available HPTLC silica gel 60 and cyano phases. The Lucas–Washburn Equation (1) [7,13,14] was used to describe the liquid transportation through porous media as follows:

$$Z_f^2 = (\gamma \cdot R \cdot T \cdot \cos\theta) / 2\eta \quad (1)$$

where Z_f is the migration distance of the solvent front, T the migration time, γ the surface tension of the mobile phase, θ the contact angle of the mobile phase with the stationary phase, R the effective pore radius, and η the viscosity of the mobile phase [7]. Heptane was selected as the mobile phase in this study due to its contact angle of 0° with the electrospun PAN nanofiber phase and HPTLC cyano phase. The obtained linear regressions fit well with the Lucas–Washburn equation ($r^2 > 0.99$), showing that the electrospun PAN nanofiber phase had the fastest mobile phase migration (Figure 2) and was faster by a factor of up to 2, if compared to particulate adsorbents.

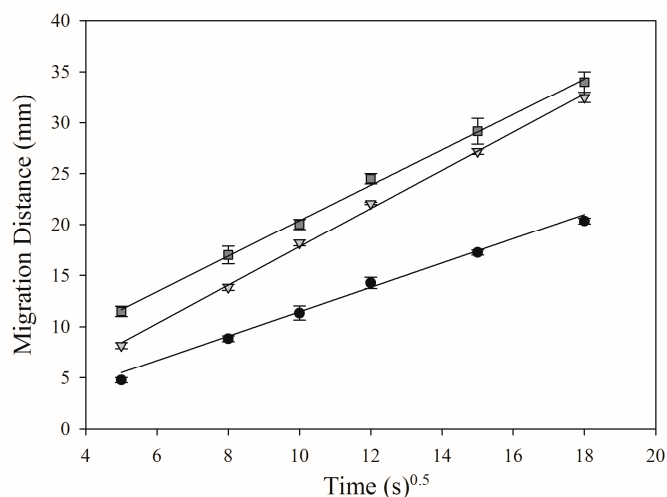


Figure 2. Comparison of mean mobile phase velocities with standard deviation (SD, $n = 3$) on HPTLC foil silica gel 60 (●), HPTLC plate silica gel CN (▼) and electrospun PAN nanofiber phase (■).

3.3. Efficiency and Performance of the Electrospun PAN Nanofiber Phase

The dye volumes applied as 3 mm bands on the electrospun PAN nanofiber phase using a modified Canon printer [12] were estimated to range between 3 and 9 nL/band (dependent on the selected band heights between 0.2 and 0.6 mm), which was equivalent to amounts of 8 to 23 ng/band [15,16]. For their separation, eight different solvent selectivities were investigated and adjusted in the elution strength. Toluene showed the best selectivity and was mixed with methanol to adjust the elution strength. The ratios 1:9 to 1:1 were investigated with additions of acetic acid or ammonium hydroxide 25%. The development with a mixture of methanol, toluene and ammonium hydroxide 25% (40:57:3, $v/v/v$) was found to separate sufficiently the 5 water-soluble food dyes (Figure 3). The migration time was 8 min for a 30 mm migration distance that was limited due to the size of the homemade microchamber with a height of 4.5 cm.

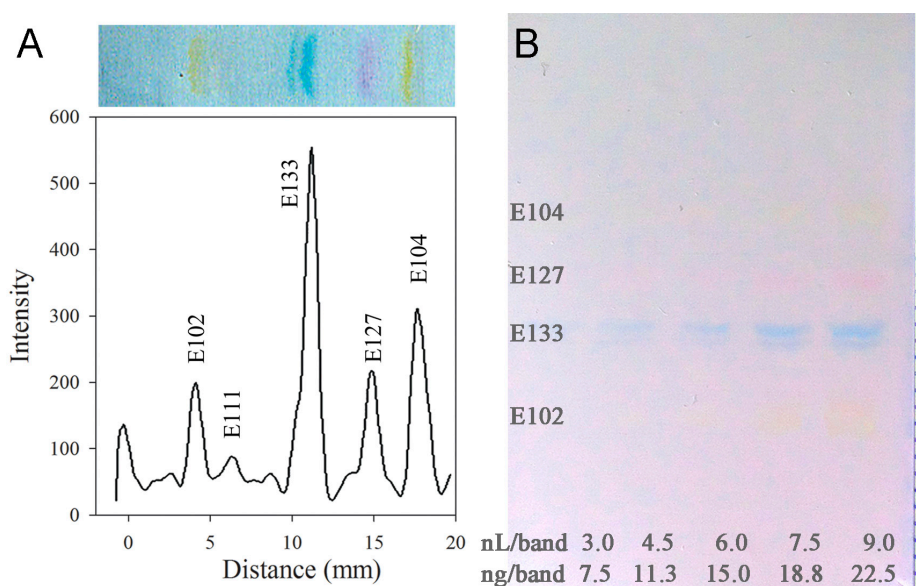


Figure 3. Videodensitogram and chromatogram (enhanced) showing the separation of a water-soluble food dye mixture (A) and a typical chromatogram used for calibration (B) on the electrospun PAN nanofiber phase (right: millimeter scale).

For 5 separations on the electrospun PAN nanofiber phase, the mean hR_F value ($R_F \times 100$), the mean plate number N according to Equation (2), and the mean resolution R_S between adjacent zones according to Equation (3) were calculated for each water-soluble food dye. In Equation (2), Z_S is the migration distance of a peak and w is its peak width on the basis. In Equation (3), Z_{S1} and Z_{S2} are the migration distances, and w_1 and w_2 the peak widths on the basis of the two adjacent peaks 1 and 2, respectively.

$$N = 16 (Z_S/w)^2 \quad (2)$$

$$R_S = 2 (Z_{S2} - Z_{S1})/(w_2 + w_1) \quad (3)$$

The mean hR_F values of the food dyes ranged from 25 to 90 and were well spread over the migration distance (Table 1, Figure 3). Their overall mean precision was 7% (%RSD, $n = 5$, over all 5 food dyes on 5 different plates), showing individual mean precisions between 1 and 16%. The overall mean plate number N (over all 5 food dyes for 5 plates) was 11,722, with individual mean plate numbers N between 8286 and 22,885. The overall mean resolution R_S was 4.5 (over all 5 food dyes for 5 plates), whereby the individual mean resolutions R_S were between 1.7 and 6.5. Their reproducibilities were highly satisfying (0.3 as mean deviation of R_S). For videodensitometry, the visible image was loaded into the VideoScan software, the Sorbfil TLC Videodensitometer (Jsc Sorbpolymer), and the assigned tracks were transformed into densitograms. For conversion, the grey scale pixels within the lines of a track were summed, which generated one data point. The baseline was automatically set using the lowest slope mode. Electronic filters were used to isolate different colors. The red filter was chosen for evaluation of the blue dye (E 133) as well as the blue filter for evaluation of the red (E 127) and yellow dyes (E 102, E 104 and E 111). The digital evaluation of the yellow dyes was more challenging compared to the blue or red dyes, as those yellow dyes were more difficult to see on the white layer background (less contrast, Figure 3B). On the manufactured electrospun PAN nanofiber phase, the linear calibrations of water-soluble food dyes obtained by videoevaluation resulted in precisions of the linear calibration functions of 3.1–9.1% (mean %RSD 5.7%) for peak heights and 2.4–9.3% (mean %RSD 5.5%) for peak areas (Table 1). Hence, the quality (characterization by SEM), good efficiency (separation time and resolution), and performance (precisions and linear calibrations) of the electrospun PAN nanofiber phase for quantitative studies on such upcoming layer materials was successfully demonstrated, if compared to a powerful HPTLC method [17].

Table 1. Performance data of electrospun PAN nanofiber phases: Mean hR_F values of five water-soluble food dyes and their precisions for five different separations as well as the mean plate numbers N , linear 4-point calibrations and mean resolutions R_S , calculated between adjacent water-soluble food dyes.

Food Dye	Mean hR_F ($n = 5$)	Precision (%RSD, $n = 5$)	Mean N ($n = 5$)	Linear Calibration		Adjacent Food Dyes	Mean R_S	SD ($n = 5$)
				sdv (Peak Area)	sdv (Peak Height)			
E 102	25	1	8345	6.0	9.3	E 102/111	1.7	0.2
E 111	33	4	8286	*	*	E 111/133	6.5	0.2
E 133	57	14	22,885	3.1	2.4	E 133/127	4.6	0.6
E 127	73	16	9596	4.5	5.7	E 127/104	5.2	0.2
E 104	90	1	9497	9.1	4.5	-	-	-
Mean	(25–90)	7	11,722	5.7	5.5	Mean	4.5	0.3

* Lowest two standard levels of the yellow E 111 were < LOQ.

3.4. Identification by Mass Spectrometry

For the first time, UTLC-ESI-MS spectra were recorded for the water-soluble food dyes on the electrospun PAN nanofiber phases and compared to those mass spectra obtained from HPTLC foils silica gel 60 (Figure 4A versus Figure 4B) using an elution head-based interface (Figure 4E). Eluents containing methanol and its mixture with water were tested for elution. Using methanol, the highest signal-to-noise ratio was obtained and a water addition for elution of the water-soluble dyes was not indicated. After lifting the elution head, the still wet layer material was not clogging within the cutting edge and removed from the carrier like known for particulate TLC/HPTLC adsorbents. The cutting edge of the elution head only caused an imprint on the flexible aluminum foil carrier after elution of the dyes from the electrospun PAN nanofiber phase (Figure 4F). The elastic fiber mat was still intact and not destroyed by the pressure of the elution head onto the fibers. The elution head distance between adjacent bands was reducible to zero, as there was no damage of the layer and thus no leakage for elution of adjacent zones (Figure 4F). The elution head cleaning between zone elutions was omitted because, firstly, a crossover of dye traces was not evident in the mass spectra for the small given amounts of ca. 20 ng/band each eluted into the single quadrupole MS, and secondly, no clogging of the cutting edge of the elution head had occurred. In contrast to particulate layers that require a drying of wetted adsorbent particles that stick to the cutting edge of the elution head, this was a great advantage. The 4 mm circular elution head was used for elution of the dyes directly into the MS. However, a circular elution head with a diameter of 2 mm (not available) instead of 4 mm would have been suited better for the tiny bands. The many advantages of recording mass spectra from electrospun layers reported in a recent study [11] were confirmed, i.e., the intact layer material after elution, the omission of the elution head cleaning, and the good detectability.

The total ion current (TIC) elution profiles of the eluted zones were clearly visible in the chronogram (Figure 4C). Clear base peaks were obtained in the negative ion mode after elution of the small analyte amounts (about 20 ng/band for all dyes; 9 nL of the 2.5 µg/µL solution) from the electrospun PAN nanofiber phases into the MS, exemplarily shown for E 105, E 111, E 127, and E 133 (Figure 4B,D). In the positive ion mode, the mass signals were marginal. For the dyes investigated, the desodiated molecule of E 103 at m/z 293.0 $[M-Na]^-$, the twofold deprotonated molecule of E 105 at m/z 177.6 $[M-2H]^{2-}$ and for the other dyes (E 111, E 127 and E 133) the twofold desodiated molecules $[M-2Na]^{2-}$ were the dominant and characteristic base peaks (Table 2), as already reported in [17] using HPTLC plates silica gel 60. Other minor signals in the mass spectra of the electrospun layers originated from the plate background. For example, in the mass spectrum of E 127, the electrospun PAN nanofiber background was clearly visible. Of course, at low amounts and/or low elution/ionization properties of an analyte, the phase background is more pronounced in the mass spectrum. The mass spectra obtained from HPTLC foils silica gel 60 showed the same base peaks (Figure 4A versus Figure 4B). Of course, the capability of the detection of dyes is dependent on the mass analyzer used (Orbitrap MS or TOF MS or MS/MS versus single quadrupole MS as used in this study) as well as the mode in which the mass spectra are recorded (selected ion monitoring (SIM) mode versus full scan mode as used in this study). Hence, the capability of detection via UTLC-ESI-MS is expected to be much better when using more efficient mass analyzers or when recording in the SIM mode.

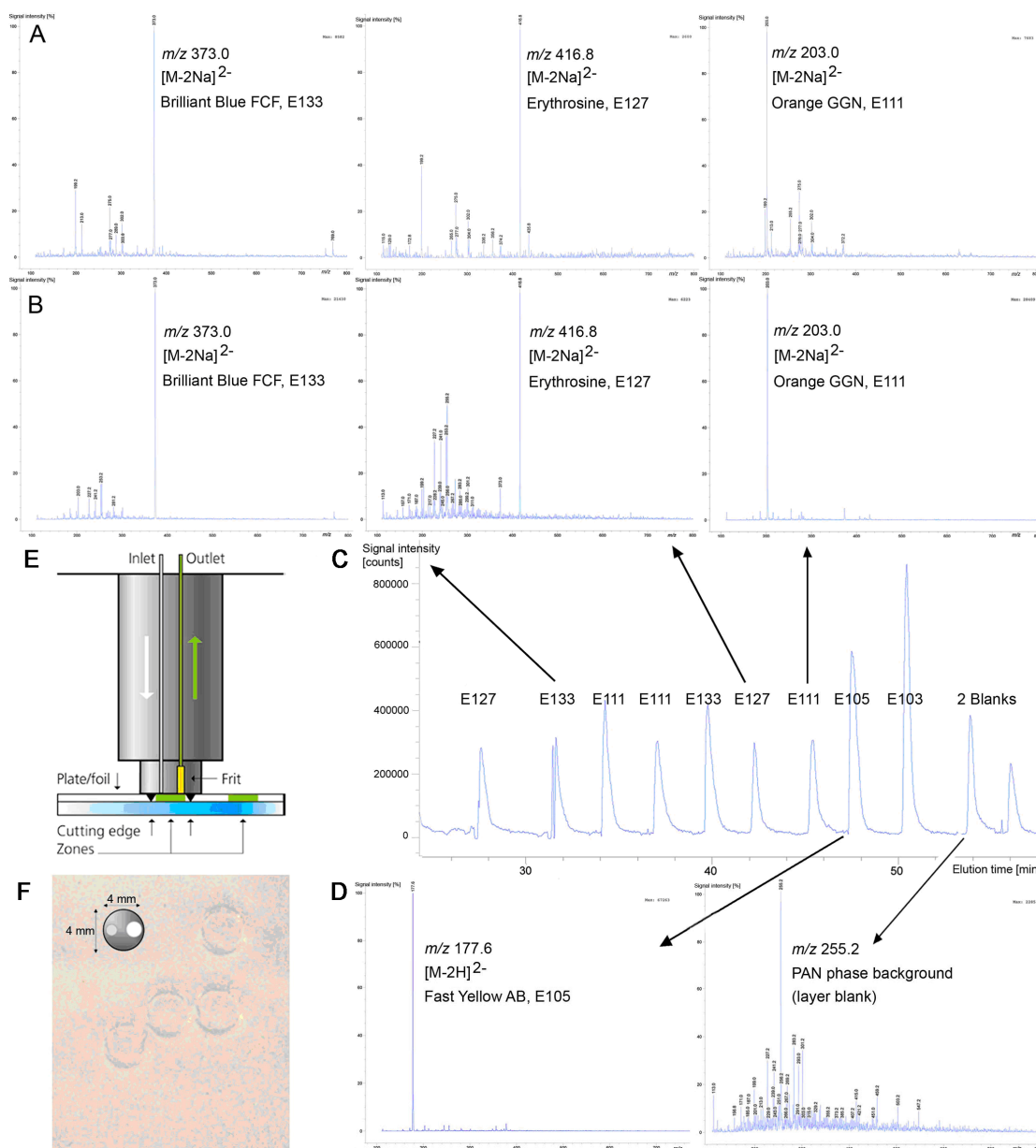
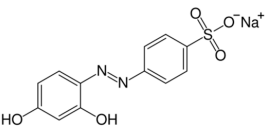
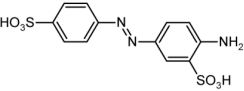
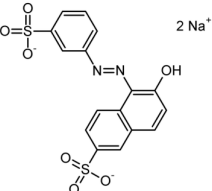
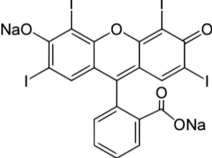
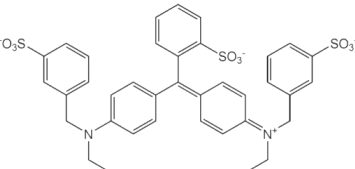


Figure 4. Comparison of HPTLC-ESI-MS spectra for E 133, E 127, and E 111 obtained from HPTLC foils silica gel 60 (A) with UTLC-Vis-ESI-MS spectra recorded from electrospun PAN nanofiber phases (B); chromatogram of elution profiles (C) and mass spectra of E 105 and PAN phase background (D); scheme of the elution head (E) and some fiber mat imprints after elution on the electrospun PAN nanofiber phase (F).

Table 2. Structure formulae of the food dyes, their molecular weights, and mass signals on HPTLC foils silica gel 60 versus electrospun PAN nanofiber phases.

Structure Formula *	Food Dye (E Number)	Molecular Weight (g/mol)	Mass Signal <i>m/z</i> on HPTLC Foils Silica Gel 60	Mass Signal <i>m/z</i> on Electrospun PAN Nanofibers
	Chrysoine resorcinol (E 103)	316.3	n.d.	293.0 [M–Na] [–]
	Fast Yellow AB (E 105)	357.4	n.d.	177.6 [M–2H] ^{2–}
	Orange GGN (E 111)	452.4	203.0 [M–2Na] ^{2–}	203.0 [M–2Na] ^{2–}
	Erythrosine (E 127)	879.9	416.8 [M–2Na] ^{2–}	416.8 [M–2Na] ^{2–}
	Brilliant Blue FCF (E 133)	792.9	373.0 [M–2Na] ^{2–}	373.0 [M–2Na] ^{2–}

n.d. not determined, * www.wikipedia.org.

4. Conclusions

The electrospun PAN nanofibers were used as the stationary phase for UTLC. As an example, the low nanoliter application via a modified office printer and separation of 5 water-soluble food dyes on the electrospun PAN nanofibrous phase was successfully demonstrated. Figures of merit (plate numbers, resolutions, reproducibilities, and calibration functions) outlined its good performance and suitability for chromatography. Furthermore, mass spectra were successfully recorded from the electrospun PAN nanofiber phases after development, whereby the electrospun layer was not damaged. Only the imprint of the cutting edge of the elution head was visible on the aluminum foil carrier. Further, the elution head cleaning process after each elution was skipped. In contrast, particulate layers require a drying of wetted adsorbent particles that stick to the cutting edge of the elution head and thus allow these particles to be removed. The elution head distance between adjacent bands was reduced to zero as there was no damage of the layer and thus no leakage. Nevertheless, an elution head with a diameter of 2 mm is recommended for the tiny bands. The obtained results suggested that the electrospun PAN nanofibrous phase possesses potential for use as stationary phase for UTLC.

Acknowledgments: The authors acknowledge research support from TRF Grant for New Researcher TRG5780161 and Research Pyramid, Ratchadaphiseksomphot Endowment Fund (GCURP 58 02 63 01) and facilitative support from The Petroleum and Petrochemical College (PPC, Chulalongkorn University) and Rajamangala University of Technology Rattanakosin.

Author Contributions: Pitt Supaphol assisted to conceive the electrospinning experiments at the very beginning; Pimolpun Niamlang and Gertrud E. Morlock developed further the fabrication, produced, and evaluated the electrospun mats, developed the application, performed all experiments, analyzed all data, as well as wrote and revised the paper.

Conflicts of Interest: The authors are declared no conflict of interest.

References

1. Poole, C.F. Thin-layer chromatography: Challenges and opportunities. *J. Chromatogr. A* **2003**, *1000*, 963–984. [[CrossRef](#)]
2. Poole, C.F. Planar chromatography at the turn of the century. *J. Chromatogr. A* **1999**, *856*, 399–427. [[CrossRef](#)]
3. Siouffi, A. From paper to planar, 60 years of thin layer chromatography. *Sep. Purif. Rev.* **2005**, *34*, 155–180. [[CrossRef](#)]
4. Hauck, H.E.; Bund, O.; Fischer, M.; Schulz, M. Ultra-thin layer chromatography (UTLC)—A new dimension in thin-layer chromatography. *J. Planar Chromatogr.* **2001**, *14*, 234–236. [[CrossRef](#)]
5. Hauck, H.E.; Schulz, M. Ultrathin-layer chromatography. *J. Chromatogr. Sci.* **2002**, *40*, 550–552. [[CrossRef](#)] [[PubMed](#)]
6. Salo, P.K.; Salomies, H.; Harju, K.; Ketola, R.A.; Kotiaho, T.; Yli-Kauhaluoma, J.; Kostinen, R. Analysis of small molecules by ultra thin-layer chromatography-atmospheric pressure matrix-assisted laser desorption/ionization mass spectrometry. *J. Am. Soc. Mass Spectrom.* **2005**, *16*, 906–915. [[CrossRef](#)] [[PubMed](#)]
7. Clark, J.E.; Olesik, S.V. Technique for ultrathin layer chromatography using an electrospun, nanofibrous stationary phase. *Anal. Chem.* **2009**, *81*, 4121–4129. [[CrossRef](#)] [[PubMed](#)]
8. Bezuidenhout, L.W.; Brett, M.J. Ultrathin layer chromatography on nanostructured thin films. *J. Chromatogr. A* **2008**, *1183*, 179–185. [[CrossRef](#)] [[PubMed](#)]
9. Clark, J.E.; Olesik, S.V. Electrospun glassy carbon ultra-thin layer chromatography devices. *J. Chromatogr. A* **2010**, *1217*, 4655–4662. [[CrossRef](#)] [[PubMed](#)]
10. Sutasinpromprae, J.; Jitjaicham, S.; Nithitanakul, M.; Meechaisue, C.; Supaphol, P. Preparation and characterization of ultrafine electrospun polyacrylonitrile fibers and their subsequent pyrolysis to carbon fibers. *Polym. Int.* **2006**, *55*, 825–833. [[CrossRef](#)]
11. Kampalanonwat, P.; Supaphol, P.; Morlock, G. Electrospun nanofiber layers with incorporated photoluminescence indicator for chromatography and detection of ultraviolet-active compounds. *J. Chromatogr. A* **2013**, *1299*, 110–117. [[CrossRef](#)] [[PubMed](#)]
12. Häbe, T.; Morlock, G. Office chromatography: Precise printing of sample solutions on miniaturized thin-layer phases and utilization for scanning direct analysis in real time mass spectrometry. *J. Chromatogr. A* **2015**, *1413*, 127–134. [[CrossRef](#)] [[PubMed](#)]
13. Washburn, E.W. The dynamics of capillary flow. *Phys. Rev.* **1921**, *17*, 273–283. [[CrossRef](#)]
14. Good, R.J.; Lin, N.J. Rate of penetration of a fluid into a porous body. *J. Colloid Interface Sci.* **1976**, *54*, 52–58. [[CrossRef](#)]
15. Morlock, G.; Stiefel, C.; Schwack, W. Efficacy of a modified printer for application of reagents in planar chromatography. *J. Liq. Chromatogr. Relat. Technol.* **2007**, *30*, 2171–2184. [[CrossRef](#)]
16. Morlock, G.; Oellig, C.; Bezuidenhout, L.W.; Brett, M.J.; Schwack, W. Miniaturized planar chromatography using office peripherals. *Anal. Chem.* **2010**, *82*, 2940–2946. [[CrossRef](#)] [[PubMed](#)]
17. Morlock, G.E.; Oellig, C. Rapid planar chromatographic analysis of 25 water-soluble dyes used as food additives. *J. AOAC Int.* **2009**, *92*, 745–756. [[PubMed](#)]

